

Product datasheet

Recombinant Human Hes1 protein ab114192

1 图像

概述

产品名称	Recombinant人Hes1 protein
蛋白长度	Protein fragment

描述

性质	Recombinant
来源	Wheat germ

氨基酸序列

Accession [Q14469](#)

种属 Human

序列 KSSKPIMEKRRRRARINESLSQLKTLILDALKKDDSSRHSKLEKADILEMTV  
KHLRNLQRAQMTAALSTDPSVLGKYRAGFSECMNEVTRFLSTCEGVNTEV  
RTRLLGH

分子量 37 kDa including tags

氨基酸 36 to 142

技术指标

Our [Abpromise guarantee](#) covers the use of **ab114192** in the following tested applications.

The application notes include recommended starting dilutions; optimal dilutions/concentrations should be determined by the end user.

应用	SDS-PAGE
	Western blot
	ELISA

形式 Liquid

补充说明 Protein concentration is above or equal to 0.05 mg/ml.  
Best used within three months from the date of receipt.

制备和贮存

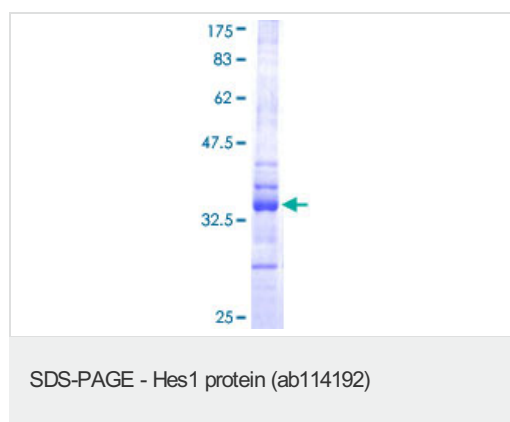
稳定性和存储 Shipped on dry ice. Upon delivery aliquot and store at -80°C. Avoid freeze / thaw cycles.

pH: 8.00  
Constituents: 0.79% Tris HCl, 0.3% Glutathione

## 常规信息

<b>功能</b>	Transcriptional repressor of genes that require a bHLH protein for their transcription. May act as a negative regulator of myogenesis by inhibiting the functions of MYOD1 and ASH1. Binds DNA on N-box motifs: 5'-CACNAG-3' with high affinity and on E-box motifs: 5'-CANNTG-3' with low affinity.
<b>序列相似性</b>	Contains 1 basic helix-loop-helix (bHLH) domain. Contains 1 Orange domain.
<b>结构域</b>	Has a particular type of basic domain (presence of a helix-interrupting proline) that binds to the N-box (CACNAG), rather than the canonical E-box (CANNTG). The C-terminal WRPW motif is a transcriptional repression domain necessary for the interaction with Groucho/TLE family members, transcriptional corepressors recruited to specific target DNA by Hairy-related proteins. The bHLH, as well as cooperation between the central Orange domain and the C-terminal WRPW motif, is required for transcriptional repressor activity.
<b>细胞定位</b>	Nucleus.

## 图片



ab114192 analysed on a 12.5% SDS-PAGE gel stained with Coomassie Blue.

**Please note:** All products are "FOR RESEARCH USE ONLY AND ARE NOT INTENDED FOR DIAGNOSTIC OR THERAPEUTIC USE"

## Our Abpromise to you: Quality guaranteed and expert technical support

- Replacement or refund for products not performing as stated on the datasheet
- Valid for 12 months from date of delivery
- Response to your inquiry within 24 hours
- We provide support in Chinese, English, French, German, Japanese and Spanish
- Extensive multi-media technical resources to help you
- We investigate all quality concerns to ensure our products perform to the highest standards

If the product does not perform as described on this datasheet, we will offer a refund or replacement. For full details of the Abpromise, please visit <http://www.abcam.cn/abpromise> or contact our technical team.

## Terms and conditions

---

- Guarantee only valid for products bought direct from Abcam or one of our authorized distributors