

Product datasheet

Recombinant Human Hes1 protein ab112302

1 图像

概述

产品名称	Recombinant人Hes1 protein
蛋白长度	Protein fragment

描述

性质	Recombinant
来源	Wheat germ
氨基酸序列	
Accession	<a href="#">Q14469</a>
种属	Human
序列	APCKLGSQAGEAAKVFGGFQVVPAPDGQFAFLIPNGAFAHSGPVIIPVYTS NSGTSVGPNAVSPSSGPSLTADSMWRPWRN
分子量	35 kDa including tags
氨基酸	201 to 280
标签	GST tag N-Terminus

技术指标

Our [Abpromise guarantee](#) covers the use of **ab112302** in the following tested applications.

The application notes include recommended starting dilutions; optimal dilutions/concentrations should be determined by the end user.

生物活性	useful for Antibody Production and Protein Array
应用	ELISA SDS-PAGE Western blot
形式	Liquid
补充说明	Best use within three months from the date of receipt of this protein.useful for Antibody Production and Protein Array

制备和贮存

## 稳定性和存储

Shipped on dry ice. Upon delivery aliquot and store at -80°C. Avoid freeze / thaw cycles.

pH: 8.00

Constituents: 0.79% Tris HCl, 0.31% Glutathione

Note: Glutathione is reduced

## 常规信息

### 功能

Transcriptional repressor of genes that require a bHLH protein for their transcription. May act as a negative regulator of myogenesis by inhibiting the functions of MYOD1 and ASH1. Binds DNA on N-box motifs: 5'-CACNAG-3' with high affinity and on E-box motifs: 5'-CANNTG-3' with low affinity.

### 序列相似性

Contains 1 basic helix-loop-helix (bHLH) domain.

Contains 1 Orange domain.

### 结构域

Has a particular type of basic domain (presence of a helix-interrupting proline) that binds to the N-box (CACNAG), rather than the canonical E-box (CANNTG).

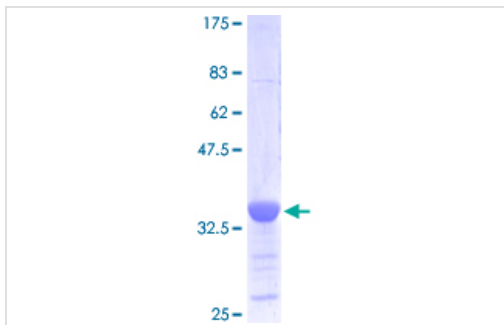
The C-terminal WRPW motif is a transcriptional repression domain necessary for the interaction with Groucho/TLE family members, transcriptional corepressors recruited to specific target DNA by Hairy-related proteins.

The bHLH, as well as cooperation between the central Orange domain and the C-terminal WRPW motif, is required for transcriptional repressor activity.

### 细胞定位

Nucleus.

## 图片



SDS-PAGE - Hes1 protein (ab112302)

112302 analysed on a 12.5% SDS-PAGE stained with Coomassie Blue.

**Please note:** All products are "FOR RESEARCH USE ONLY AND ARE NOT INTENDED FOR DIAGNOSTIC OR THERAPEUTIC USE"

## Our Abpromise to you: Quality guaranteed and expert technical support

- Replacement or refund for products not performing as stated on the datasheet
- Valid for 12 months from date of delivery
- Response to your inquiry within 24 hours
- We provide support in Chinese, English, French, German, Japanese and Spanish
- Extensive multi-media technical resources to help you

- We investigate all quality concerns to ensure our products perform to the highest standards

If the product does not perform as described on this datasheet, we will offer a refund or replacement. For full details of the Abpromise, please visit <http://www.abcam.cn/abpromise> or contact our technical team.

### **Terms and conditions**

---

- Guarantee only valid for products bought direct from Abcam or one of our authorized distributors