

Product datasheet

Recombinant Human HLA-DQB1 protein ab114251

1 图像

概述

产品名称	Recombinant人HLA-DQB1 protein
蛋白长度	Full length protein

描述

性质	Recombinant
来源	Wheat germ

氨基酸序列

Accession [P01920](#)

种属 Human

序列 MSWKKALRIPGGLRVATVTLMLAMLSTPVAEGRDSPEDFVYQFKGMCYFT
 NGTERVRLVTRYIYNREEYARFSDVGVYRAVTPLGPPAAEYWNSQKEVL
 ERTRAELDTVCRHNYQLELR TTLQRRVEPTVTISPSRTEALNHHNLLVCS
 VTDFYPAQIKVRWFRNDQEETTGVVSTPLIRNGDWT FQILVMLEMTPQRG
 DVYTCHVEHPSLQNP IIVEWRAQSESAQSKMLSGIGGFVLGLIFLGLGLI
 IHHR S

分子量	55 kDa including tags
氨基酸	1 to 261
标签	GST tag N-Terminus

技术指标

Our [Abpromise guarantee](#) covers the use of **ab114251** in the following tested applications.

The application notes include recommended starting dilutions; optimal dilutions/concentrations should be determined by the end user.

应用	ELISA SDS-PAGE Western blot
形式	Liquid
补充说明	Protein concentration is above or equal to 0.05 µg/µl

稳定性和存储

Shipped on dry ice. Upon delivery aliquot and store at -80°C. Avoid freeze / thaw cycles.

pH: 8.00

Constituents: 0.3% Glutathione, 0.79% Tris HCl

常规信息**功能**

Binds peptides derived from antigens that access the endocytic route of antigen presenting cells (APC) and presents them on the cell surface for recognition by the CD4 T-cells. The peptide binding cleft accommodates peptides of 10-30 residues. The peptides presented by MHC class II molecules are generated mostly by degradation of proteins that access the endocytic route, where they are processed by lysosomal proteases and other hydrolases. Exogenous antigens that have been endocytosed by the APC are thus readily available for presentation via MHC II molecules, and for this reason this antigen presentation pathway is usually referred to as exogenous. As membrane proteins on their way to degradation in lysosomes as part of their normal turn-over are also contained in the endosomal/lysosomal compartments, exogenous antigens must compete with those derived from endogenous components. Autophagy is also a source of endogenous peptides, autophagosomes constitutively fuse with MHC class II loading compartments. In addition to APCs, other cells of the gastrointestinal tract, such as epithelial cells, express MHC class II molecules and CD74 and act as APCs, which is an unusual trait of the GI tract. To produce a MHC class II molecule that presents an antigen, three MHC class II molecules (heterodimers of an alpha and a beta chain) associate with a CD74 trimer in the ER to form a heterononamer. Soon after the entry of this complex into the endosomal/lysosomal system where antigen processing occurs, CD74 undergoes a sequential degradation by various proteases, including CTSS and CTSL, leaving a small fragment termed CLIP (class-II-associated invariant chain peptide). The removal of CLIP is facilitated by HLA-DM via direct binding to the alpha-beta-CLIP complex so that CLIP is released. HLA-DM stabilizes MHC class II molecules until primary high affinity antigenic peptides are bound. The MHC II molecule bound to a peptide is then transported to the cell membrane surface. In B-cells, the interaction between HLA-DM and MHC class II molecules is regulated by HLA-DO. Primary dendritic cells (DCs) also to express HLA-DO. Lysosomal microenvironment has been implicated in the regulation of antigen loading into MHC II molecules, increased acidification produces increased proteolysis and efficient peptide loading.

序列相似性

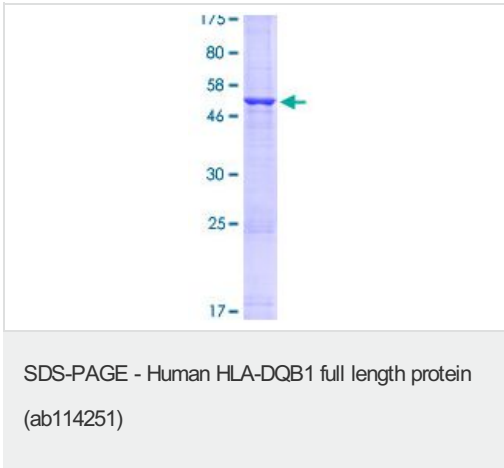
Belongs to the MHC class II family.

Contains 1 Ig-like C1-type (immunoglobulin-like) domain.

细胞定位

Cell membrane. Endoplasmic reticulum membrane. Golgi apparatus, trans-Golgi network membrane. Endosome membrane. Lysosome membrane. The MHC class II complex transits through a number of intracellular compartments in the endocytic pathway until it reaches the cell membrane for antigen presentation.

图片



ab114251 analysed by 12.5% SDS-PAGE
and stained with Coomassie Blue.

Please note: All products are "FOR RESEARCH USE ONLY AND ARE NOT INTENDED FOR DIAGNOSTIC OR THERAPEUTIC USE"

Our Abpromise to you: Quality guaranteed and expert technical support

- Replacement or refund for products not performing as stated on the datasheet
- Valid for 12 months from date of delivery
- Response to your inquiry within 24 hours
- We provide support in Chinese, English, French, German, Japanese and Spanish
- Extensive multi-media technical resources to help you
- We investigate all quality concerns to ensure our products perform to the highest standards

If the product does not perform as described on this datasheet, we will offer a refund or replacement. For full details of the Abpromise, please visit <http://www.abcam.cn/abpromise> or contact our technical team.

Terms and conditions

- Guarantee only valid for products bought direct from Abcam or one of our authorized distributors