

Product datasheet

# Recombinant Human Glucose 6 phosphate isomerase protein ab87625

2 References 2 图像

概述

产品名称 重组人Glucose 6 phosphate isomerase蛋白  
 蛋白长度 Full length protein

描述

性质 Recombinant  
 来源 Escherichia coli

氨基酸序列

种属 Human

序列  
 MGSSHHHHHH SGLVPRGSH MAALTRDPQF  
 QKLQWYREH RSELNLRRLF DANKDRFNHF  
 SLTLNTNHGH ILVDYSKNLV TEDVMRMLVD  
 LAKSRGVEAA RERMFNGEKI NYTEGRAVLH  
 VALRNRSNTP ILVDGKDVMPEVNKVLDKMK  
 SFCQVRVSGD WKGYTGKTIT DVINIGIGGS  
 DLGPLMVTEA LKPYSGGPR VWYVSNIDGT  
 HIAKTLAQLN PESSLFIIAS KTFTTQETIT  
 NAETAKEWFL QAAKDPSAVA KHVALSTNT  
 TKVKEFGIDP QNMFEFWDWV GGRYSLWSAI  
 GLSIALHVGFDNFEQLLSGA HWMDQHFRRT  
 PLEKNAPVLL ALLGIWYINC FGCETHAMPL  
 YDQYLHRFAA YFQQGDMESN GKYITKSGTR  
 VDHQTGPVWV GEPGTNGQHA FYQLIHQGTK  
 MIPCDFLIPV QTQHPIRKGL HHKILLANFL  
 AQTEALMRGK STEEARKELQ AAGKSPEDLE  
 RLLPHKVFEG NRPTNSIVFT KLTPFMLGAL  
 VAMYEHKIFV QGIIWDINSF DQWGVELGKQ  
 LAKKIEPELD GSAQVTSHDA STNGLINFIK  
 QQREARVQ

技术指标

Our [Abpromise guarantee](#) covers the use of **ab87625** in the following tested applications.

The application notes include recommended starting dilutions; optimal dilutions/concentrations should be determined by the end user.

<b>应用</b>	SDS-PAGE Western blot
<b>纯度</b>	> 95 % SDS-PAGE. ab87625 is purified using conventional chromatography techniques. Endotoxin: < 1.0 EU per 1 µg of protein (determined by LAL method).
<b>形式</b>	Liquid

---

#### 制备和贮存

<b>稳定性和存储</b>	Shipped at 4°C. Upon delivery aliquot and store at -20°C or -80°C. Avoid repeated freeze / thaw cycles.  Preservative: None Constituents: 10% Glycerol, 20mM Tris HCl, 1mM DTT, pH 8.0
---------------	---

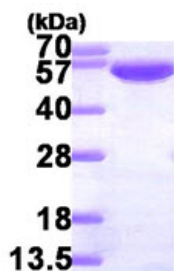
---

#### 常规信息

<b>功能</b>	Besides it's role as a glycolytic enzyme, mammalian GPI can function as a tumor-secreted cytokine and an angiogenic factor (AMF) that stimulates endothelial cell motility. GPI is also a neurotrophic factor (Neuroleukin) for spinal and sensory neurons.
<b>通路</b>	Carbohydrate degradation; glycolysis; D-glyceraldehyde 3-phosphate and glycero phosphate from D-glucose: step 2/4.
<b>疾病相关</b>	Defects in GPI are the cause of hemolytic anemia non-spherocytic due to glucose phosphate isomerase deficiency (HA-GPID) [MIM:613470]. It is a form of anemia in which there is no abnormal hemoglobin or spherocytosis. It is caused by glucose phosphate isomerase deficiency. Severe GPI deficiency can be associated with hydrops fetalis, immediate neonatal death and neurological impairment.
<b>序列相似性</b>	Belongs to the GPI family.
<b>翻译后修饰</b>	Phosphorylation at Ser-185 by CK2 has been shown to decrease enzymatic activity and may contribute to secretion by a non-classical secretory pathway. ISGylated.
<b>细胞定位</b>	Cytoplasm. Secreted.

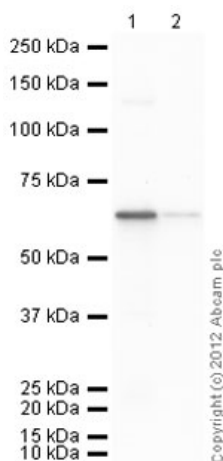
---

#### 图片



15% SDS-PAGE showing ab87625 at approximately 65kDa (3µg).

SDS-PAGE - Glucose 6 phosphate isomerase protein (His tag) (ab87625)



Western blot - Anti-Glucose 6 phosphate isomerase antibody (

[ab86950](#)

)

**All lanes :** Anti-Glucose 6 phosphate isomerase antibody ([ab86950](#)) at 1 µg/ml

**Lane 1 :** Recombinant Human Glucose 6 phosphate isomerase protein (ab87625) at 0.1 µg

**Lane 2 :** Recombinant Human Glucose 6 phosphate isomerase protein (ab87625) at 0.01 µg

**Secondary**

**All lanes :** Goat Anti-Rabbit IgG H&L (HRP) preadsorbed ([ab97080](#)) at 1/5000 dilution

Developed using the ECL technique.

Performed under reducing conditions.

**Predicted band size:** 63 kDa

**Exposure time:** 30 seconds

**Please note:** All products are "FOR RESEARCH USE ONLY AND ARE NOT INTENDED FOR DIAGNOSTIC OR THERAPEUTIC USE"

**Our Abpromise to you: Quality guaranteed and expert technical support**

- Replacement or refund for products not performing as stated on the datasheet
- Valid for 12 months from date of delivery
- Response to your inquiry within 24 hours
- We provide support in Chinese, English, French, German, Japanese and Spanish
- Extensive multi-media technical resources to help you

- We investigate all quality concerns to ensure our products perform to the highest standards

If the product does not perform as described on this datasheet, we will offer a refund or replacement. For full details of the Abpromise, please visit <http://www.abcam.cn/abpromise> or contact our technical team.

### **Terms and conditions**

---

- Guarantee only valid for products bought direct from Abcam or one of our authorized distributors