

Product datasheet

Recombinant Human GBA protein ab114258

1 图像

概述

产品名称	重组人GBA蛋白
蛋白长度	Protein fragment

描述

性质	Recombinant
来源	Wheat germ
氨基酸序列	
Accession	<a href="#">P04062</a>
种属	Human
序列	NWVRNFVDSPIIVDITKDTFYKQPMFYHLGHFSKFIPEGSQRVGLVASQK NDLDAVALMHPDGSVVVVLNRSSKDVPLTIKDPVGFLETISPGYSIHT YLWRRQ
分子量	37 kDa including tags
氨基酸	431 to 536

技术指标

Our [Abpromise guarantee](#) covers the use of **ab114258** in the following tested applications.

The application notes include recommended starting dilutions; optimal dilutions/concentrations should be determined by the end user.

应用	ELISA SDS-PAGE Western blot
形式	Liquid
补充说明	Protein concentration is above or equal to 0.05 µg/µl

制备和贮存

稳定性和存储	Shipped on dry ice. Upon delivery aliquot and store at -80°C. Avoid freeze / thaw cycles. pH: 8.00
--------	---

## 常规信息

---

### 疾病相关

Defects in GBA are the cause of Gaucher disease (GD) [MIM:230800]; also known as glucocerebrosidase deficiency. GD is the most prevalent lysosomal storage disease, characterized by accumulation of glucosylceramide in the reticulo-endothelial system. Different clinical forms are recognized depending on the presence (neuronopathic forms) or absence of central nervous system involvement, severity and age of onset.

Defects in GBA are the cause of Gaucher disease type 1 (GD1) [MIM:230800]; also known as adult non-neuronopathic Gaucher disease. GD1 is characterized by hepatosplenomegaly with consequent anemia and thrombopenia, and bone involvement. The central nervous system is not involved.

Defects in GBA are the cause of Gaucher disease type 2 (GD2) [MIM:230900]; also known as acute neuronopathic Gaucher disease. GD2 is the most severe form and is universally progressive and fatal. It manifests soon after birth, with death generally occurring before patients reach two years of age.

Defects in GBA are the cause of Gaucher disease type 3 (GD3) [MIM:231000]; also known as subacute neuronopathic Gaucher disease. GD3 has central nervous manifestations.

Defects in GBA are the cause of Gaucher disease type 3C (GD3C) [MIM:231005]; also known as pseudo-Gaucher disease or Gaucher-like disease.

Defects in GBA are the cause of Gaucher disease perinatal lethal (GDPL) [MIM:608013]. It is a distinct form of Gaucher disease type 2, characterized by fetal onset. Hydrops fetalis, in utero fetal death and neonatal distress are prominent features. When hydrops is absent, neurologic involvement begins in the first week and leads to death within 3 months. Hepatosplenomegaly is a major sign, and is associated with ichthyosis, arthrogryposis, and facial dysmorphism.

Note=Perinatal lethal Gaucher disease is associated with non-immune hydrops fetalis, a generalized edema of the fetus with fluid accumulation in the body cavities due to non-immune causes. Non-immune hydrops fetalis is not a diagnosis in itself but a symptom, a feature of many genetic disorders, and the end-stage of a wide variety of disorders.

Defects in GBA contribute to susceptibility to Parkinson disease (PARK) [MIM:168600]. A complex neurodegenerative disorder characterized by bradykinesia, resting tremor, muscular rigidity and postural instability. Additional features are characteristic postural abnormalities, dysautonomia, dystonic cramps, and dementia. The pathology of Parkinson disease involves the loss of dopaminergic neurons in the substantia nigra and the presence of Lewy bodies (intraneuronal accumulations of aggregated proteins), in surviving neurons in various areas of the brain. The disease is progressive and usually manifests after the age of 50 years, although early-onset cases (before 50 years) are known. The majority of the cases are sporadic suggesting a multifactorial etiology based on environmental and genetic factors. However, some patients present with a positive family history for the disease. Familial forms of the disease usually begin at earlier ages and are associated with atypical clinical features.

### 序列相似性

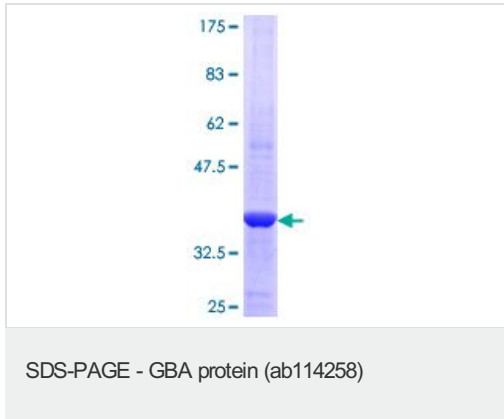
Belongs to the glycosyl hydrolase 30 family.

### 细胞定位

Lysosome membrane. Interaction with saposin-C promotes membrane association.

## 图片

---



ab114258 analysed by 12.5% SDS-PAGE  
and stained with Coomassie Blue.

**Please note:** All products are "FOR RESEARCH USE ONLY AND ARE NOT INTENDED FOR DIAGNOSTIC OR THERAPEUTIC USE"

### Our Abpromise to you: Quality guaranteed and expert technical support

- Replacement or refund for products not performing as stated on the datasheet
- Valid for 12 months from date of delivery
- Response to your inquiry within 24 hours
- We provide support in Chinese, English, French, German, Japanese and Spanish
- Extensive multi-media technical resources to help you
- We investigate all quality concerns to ensure our products perform to the highest standards

If the product does not perform as described on this datasheet, we will offer a refund or replacement. For full details of the Abpromise, please visit <http://www.abcam.cn/abpromise> or contact our technical team.

### Terms and conditions

- Guarantee only valid for products bought direct from Abcam or one of our authorized distributors