

Product datasheet

Recombinant Human EMILIN1 protein ab116414

1 图像

概述

产品名称	Recombinant人EMILIN1 protein
蛋白长度	Protein fragment

描述

性质	Recombinant
来源	Escherichia coli
氨基酸序列	
Accession	Q9Y6C2
种属	Human
分子量	39 kDa including tags
氨基酸	676 to 1016

技术指标

Our [Abpromise guarantee](#) covers the use of **ab116414** in the following tested applications.

The application notes include recommended starting dilutions; optimal dilutions/concentrations should be determined by the end user.

应用	Western blot ELISA SDS-PAGE Mass Spectrometry
质谱法	MALDI-TOF-TOF
纯度	> 95 % SDS-PAGE.
形式	Liquid

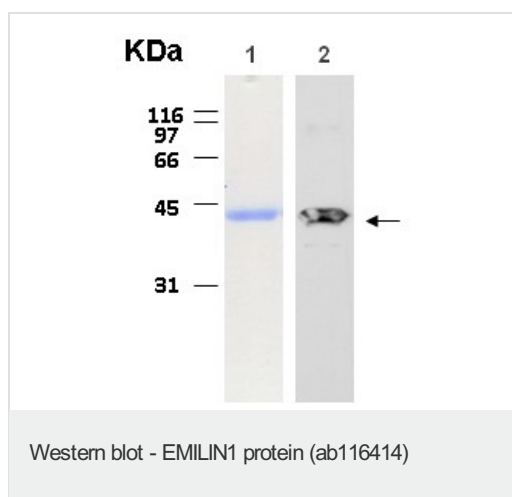
制备和贮存

稳定性和存储	Shipped on dry ice. Upon delivery aliquot and store at -80°C. Avoid freeze / thaw cycles. pH: 7.40 Constituent: 99% PBS
--------	---

常规信息

功能	May be responsible for anchoring smooth muscle cells to elastic fibers, and may be involved not only in the formation of the elastic fiber, but also in the processes that regulate vessel assembly. Has cell adhesive capacity.
组织特异性	Distributed in tissues where resilience and elastic recoil are prominent. Highest levels in the adult small intestine, aorta, lung, uterus, and appendix and in the fetal spleen, kidney, lung, and heart; intermediate expression was detected in adult liver, ovary, colon, stomach, lymph node and spleen; adult heart, bladder, prostate, adrenal gland, mammary gland, placenta and kidney showed low expression whereas a series of other adult tissues, including skeletal muscle and different regions of adult brain show no expression.
序列相似性	Contains 1 C1q domain. Contains 1 collagen-like domain. Contains 1 EMI domain.
细胞定位	Secreted > extracellular space > extracellular matrix. Found mainly at the interface between amorphous elastin and microfibrils.

Recombinant Human EMILIN1 protein 图像



10% SDS-PAGE stained with Coomassie Blue (Lane 1), immunoblotting with anti-6xHis (Lane 2)

Please note: All products are "FOR RESEARCH USE ONLY AND ARE NOT INTENDED FOR DIAGNOSTIC OR THERAPEUTIC USE"

Our Abpromise to you: Quality guaranteed and expert technical support

- Replacement or refund for products not performing as stated on the datasheet
- Valid for 12 months from date of delivery
- Response to your inquiry within 24 hours
- We provide support in Chinese, English, French, German, Japanese and Spanish
- Extensive multi-media technical resources to help you
- We investigate all quality concerns to ensure our products perform to the highest standards

If the product does not perform as described on this datasheet, we will offer a refund or replacement. For full details of the Abpromise, please visit <http://www.abcam.cn/abpromise> or contact our technical team.

Terms and conditions

- Guarantee only valid for products bought direct from Abcam or one of our authorized distributors

