

Product datasheet

Recombinant Human Dopamine D2 Receptor protein ab112281

1 图像

概述

产品名称	重组人Dopamine D2 Receptor蛋白
蛋白长度	Protein fragment

描述

性质	Recombinant
来源	Wheat germ
氨基酸序列	
Accession	<a href="#">P14416</a>
种属	Human
序列	MDPLNLSWYDDDLERQNWSRPFNGSDGKADRPYNYATLLTLLIAVIVF GNVLVCMASREKALQTTTNYLIVSLAVADLLVATLVMPWVVYLEVVG EW KFSRIHCDIF
分子量	38 kDa including tags
氨基酸	1 to 110
标签	GST tag N-Terminus

技术指标

Our [Abpromise guarantee](#) covers the use of **ab112281** in the following tested applications.

The application notes include recommended starting dilutions; optimal dilutions/concentrations should be determined by the end user.

生物活性	useful for Antibody Production and Protein Array
应用	Western blot SDS-PAGE ELISA Peptide Array
形式	Liquid
补充说明	Best use within three months from the date of receipt of this protein.useful for Antibody Production and Protein Array

## 制备和贮存

### 稳定性和存储

Shipped on dry ice. Upon delivery aliquot and store at -80°C. Avoid freeze / thaw cycles.

pH: 8.00

Constituents: 0.79% Tris HCl, 0.31% Glutathione

Note: Reduced glutathione

## 常规信息

### 功能

This is one of the five types (D1 to D5) of receptors for dopamine. The activity of this receptor is mediated by G proteins which inhibit adenylyl cyclase.

### 疾病相关

Defects in DRD2 are associated with dystonia type 11 (DYT11) [MIM:159900]; also known as alcohol-responsive dystonia. DYT11 is a myoclonic dystonia. Dystonia is defined by the presence of sustained involuntary muscle contractions, often leading to abnormal postures. DYT11 is characterized by involuntary lightning jerks and dystonic movements and postures alleviated by alcohol. Inheritance is autosomal dominant. The age of onset, pattern of body involvement, presence of myoclonus and response to alcohol are all variable.

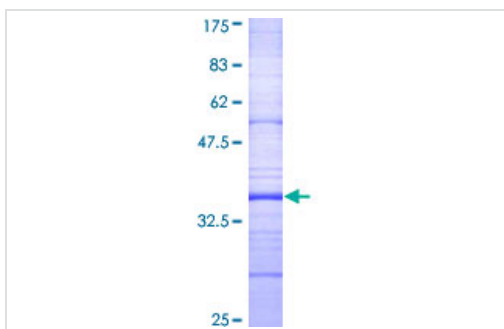
### 序列相似性

Belongs to the G-protein coupled receptor 1 family.

### 细胞定位

Cell membrane.

## 图片



12.5% SDS-PAGE Stained with Coomassie

Blue with recombinant protein.

SDS-PAGE - Dopamine D2 Receptor protein  
(ab112281)

**Please note:** All products are "FOR RESEARCH USE ONLY AND ARE NOT INTENDED FOR DIAGNOSTIC OR THERAPEUTIC USE"

## Our Abpromise to you: Quality guaranteed and expert technical support

- Replacement or refund for products not performing as stated on the datasheet
- Valid for 12 months from date of delivery
- Response to your inquiry within 24 hours
- We provide support in Chinese, English, French, German, Japanese and Spanish
- Extensive multi-media technical resources to help you
- We investigate all quality concerns to ensure our products perform to the highest standards

If the product does not perform as described on this datasheet, we will offer a refund or replacement. For full details of the Abpromise, please visit <http://www.abcam.cn/abpromise> or contact our technical team.

## Terms and conditions

---

- Guarantee only valid for products bought direct from Abcam or one of our authorized distributors