

Product datasheet

Recombinant Human DPH2 protein ab116996

1 图像

概述

产品名称	Recombinant人DPH2 protein
蛋白长度	Full length protein

描述

性质	Recombinant
来源	Wheat germ

氨基酸序列

Accession [Q9BQC3](#)

种属 Human

序列  
 MESMFSSPAEAAALQRETGVPGLLTPLPDL DGVYELERVAGFVRDLGCERV  
 ALQFPDQLLGDAVAVAAARLEETT GSKMFILGDTAYGCCVDVLGAEQAGA  
 QALIHFGPACLSPPARLPVAFVLRQRSVALELCVKAFEQNPD PKAPVV  
 LLSEPAHALEALATLLRPRYLDLLVSSPAFPQPVGSLSP EPMPLERFG  
 RRFPLAPGRRLEEYGA FYVGGSKASPD PDLDPDLSRLLLGWAPGQPFSSC  
 CPDTGKTQDEGARAGRLRARRRYLVERARDARVVGLLAGT LGVAQHREAL  
 AHLRNLTQAAGKRSYVLALGRPTPAKLANFPEVDV FVLLACPLGALAPQL  
 SGSFFQPI LAPCELEAACNPAWPPPGLAPHLTHYADLLPGSPFHVALPPP  
 ESELWETPDVSLITGDLRPPPAWKSSNDHGSLALTPRPQLELAESSPAAS  
 FLSSRSWQGLEPRLGQTPVTEAVSGRRGIAIAYEDEGSG

分子量 80 kDa including tags

氨基酸 1 to 489

技术指标

Our [Abpromise guarantee](#) covers the use of **ab116996** in the following tested applications.

The application notes include recommended starting dilutions; optimal dilutions/concentrations should be determined by the end user.

应用	ELISA Western blot SDS-PAGE
形式	Liquid

## 补充说明

Protein concentration is above or equal to 0.05 mg/ml.  
This protein is best used within three months from the date of receipt.

## 制备和贮存

### 稳定性和存储

Shipped on dry ice. Upon delivery aliquot and store at -80°C. Avoid freeze / thaw cycles.  
pH: 8.00  
Constituents: 0.79% Tris HCl, 0.3% Glutathione

## 常规信息

### 功能

Required for the first step in the synthesis of diphthamide, a post-translational modification of histidine which occurs in translation elongation factor 2.

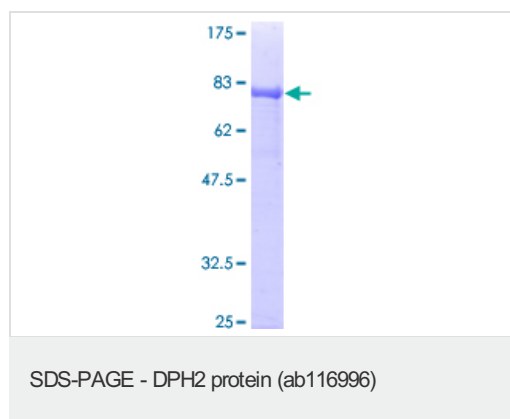
### 组织特异性

Strongly expressed in skeletal muscle. Moderately expressed in heart, small intestine, liver, pancreas, testis and colon. Weakly expressed in brain, placenta, kidney, spleen, thymus, prostate, ovary and lymphocytes.

### 序列相似性

Belongs to the DPH1/DPH2 family. DPH2 subfamily.

## 图片



12.5% SDS-PAGE showing ab116996 at  
approx. 79.90 kDa.  
Stained with Coomassie Blue.

**Please note:** All products are "FOR RESEARCH USE ONLY AND ARE NOT INTENDED FOR DIAGNOSTIC OR THERAPEUTIC USE"

## Our Abpromise to you: Quality guaranteed and expert technical support

- Replacement or refund for products not performing as stated on the datasheet
- Valid for 12 months from date of delivery
- Response to your inquiry within 24 hours
- We provide support in Chinese, English, French, German, Japanese and Spanish
- Extensive multi-media technical resources to help you
- We investigate all quality concerns to ensure our products perform to the highest standards

If the product does not perform as described on this datasheet, we will offer a refund or replacement. For full details of the Abpromise, please visit <http://www.abcam.cn/abpromise> or contact our technical team.

## Terms and conditions

---

- Guarantee only valid for products bought direct from Abcam or one of our authorized distributors