

Product datasheet

Recombinant Human DOK1 protein ab112280

1 图像

概述

产品名称	重组人DOK1蛋白
蛋白长度	Full length protein

描述

性质	Recombinant
来源	Wheat germ
氨基酸序列	
Accession	Q99704
种属	Human
分子量	79 kDa
氨基酸	1 to 481
标签	GST tag N-Terminus

技术指标

Our [Abpromise guarantee](#) covers the use of **ab112280** in the following tested applications.

The application notes include recommended starting dilutions; optimal dilutions/concentrations should be determined by the end user.

生物活性	useful for Antibody Production and Protein Array
应用	Western blot SDS-PAGE ELISA Peptide Array
形式	Liquid
补充说明	Best use within three months from the date of receipt of this protein.useful for Antibody Production and Protein Array

制备和贮存

稳定性和存储	Shipped on dry ice. Upon delivery aliquot and store at -80°C. Avoid freeze / thaw cycles.
--------	-------------------------------------------------------------------------------------------

pH: 8.00

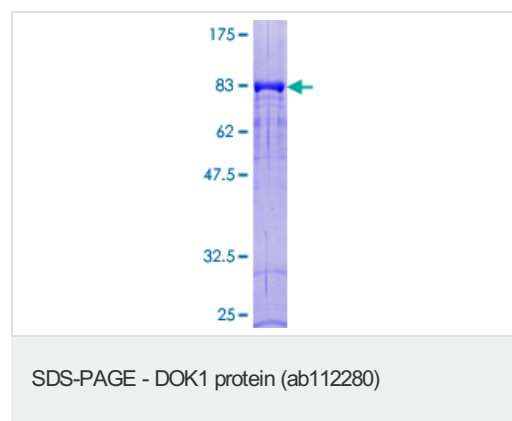
Constituents: 0.79% Tris HCl, 0.31% Glutathione

Note: Reduced glutathione

常规信息

功能	DOK proteins are enzymatically inert adaptor or scaffolding proteins. They provide a docking platform for the assembly of multimolecular signaling complexes. DOK1 appears to be a negative regulator of the insulin signaling pathway. Modulates integrin activation by competing with talin for the same binding site on ITGB3.
组织特异性	Expressed in pancreas, heart, leukocyte and spleen. Expressed in both resting and activated peripheral blood T-cells.
序列相似性	Belongs to the DOK family. Type A subfamily. Contains 1 IRS-type PTB domain. Contains 1 PH domain.
结构域	The PTB domain mediates receptor interaction.
翻译后修饰	Constitutively tyrosine-phosphorylated. Phosphorylated on tyrosine residues by the insulin receptor kinase. Results in the negative regulation of the insulin signaling pathway.
细胞定位	Cytoplasm and Cytoplasm > perinuclear region.

图片



12.5% SDS-PAGE Stained with Coomassie
Blue with recombinant protein.

Please note: All products are "FOR RESEARCH USE ONLY AND ARE NOT INTENDED FOR DIAGNOSTIC OR THERAPEUTIC USE"

Our Abpromise to you: Quality guaranteed and expert technical support

- Replacement or refund for products not performing as stated on the datasheet
- Valid for 12 months from date of delivery
- Response to your inquiry within 24 hours
- We provide support in Chinese, English, French, German, Japanese and Spanish
- Extensive multi-media technical resources to help you
- We investigate all quality concerns to ensure our products perform to the highest standards

If the product does not perform as described on this datasheet, we will offer a refund or replacement. For full details of the Abpromise, please visit <http://www.abcam.cn/abpromise> or contact our technical team.

Terms and conditions

- Guarantee only valid for products bought direct from Abcam or one of our authorized distributors