

Product datasheet

Recombinant Human CRIP1 protein ab116959

1 图像

概述

产品名称	重组人CRIP1蛋白
蛋白长度	Full length protein

描述

性质	Recombinant
来源	Wheat germ
氨基酸序列	
Accession	P50238
种属	Human
序列	MPKCPKCNKEVYFAERVTSLGKDWHRPCLKCEKCGKTLTSGGHAEHEGKP YCNHPCYAAMFGPKGFGRGGAESHTFK
分子量	35 kDa including tags
氨基酸	1 to 77

技术指标

Our [Abpromise guarantee](#) covers the use of **ab116959** in the following tested applications.

The application notes include recommended starting dilutions; optimal dilutions/concentrations should be determined by the end user.

应用	ELISA SDS-PAGE Western blot
形式	Liquid
补充说明	Protein concentration is above or equal to 0.05 mg/ml. Best used within three months from the date of receipt.

制备和贮存

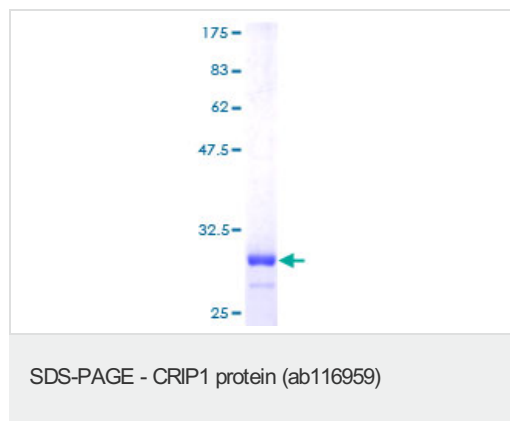
稳定性和存储	Shipped on dry ice. Upon delivery aliquot and store at -80°C. Avoid freeze / thaw cycles. pH: 8.00
--------	---

Constituents: 0.3% Glutathione, 0.79% Tris HCl

常规信息

功能	Seems to have a role in zinc absorption and may function as an intracellular zinc transport protein.
序列相似性	Contains 1 LIM zinc-binding domain.

图片



12.5% SDS-PAGE showing ab116959 at approximately 34.58kDa stained with Coomassie Blue.

Please note: All products are "FOR RESEARCH USE ONLY AND ARE NOT INTENDED FOR DIAGNOSTIC OR THERAPEUTIC USE"

Our Abpromise to you: Quality guaranteed and expert technical support

- Replacement or refund for products not performing as stated on the datasheet
- Valid for 12 months from date of delivery
- Response to your inquiry within 24 hours
- We provide support in Chinese, English, French, German, Japanese and Spanish
- Extensive multi-media technical resources to help you
- We investigate all quality concerns to ensure our products perform to the highest standards

If the product does not perform as described on this datasheet, we will offer a refund or replacement. For full details of the Abpromise, please visit <http://www.abcam.cn/abpromise> or contact our technical team.

Terms and conditions

- Guarantee only valid for products bought direct from Abcam or one of our authorized distributors