

Product datasheet

Recombinant Human CD1d protein ab114936

1 图像

概述

产品名称	重组人CD1d蛋白
蛋白长度	Full length protein

描述

性质	Recombinant
来源	Wheat germ

氨基酸序列

Accession [P15813](#)

种属 Human

序列 MGCLLFLLLWALLQAWGSAEVPQRLFPLRCLQISSFANSSWTRTDGLAWL
 GELQTHSWSNDSDTVRSCLKPWSQGTFFSDQQWETLQHIFRVYRSSFTRDVK
 EFAKMLRLSYPLELQVSAGCEVHPGNASNNFFHVAFAQKDILSFQGTSWE
 PTQEAPLWVNLAIQVLNQDKWTRETVQWLLNGTCPQFVSGLLESGKSELK
 KQVKPKAWLSRGSPGPGRLLLLVCHVSGFYKPKVWVKWMRGEQEQGTQP
 GDILPNADETWYLRATLDVVAGEAAGLSCRVKHSSLEGQDIVLYWGGSYT
 SMGLIALAVLACLLFLLIVGFTSRFKRQTSYQGVL

分子量 63 kDa including tags

氨基酸 1 to 335

技术指标

Our [Abpromise guarantee](#) covers the use of **ab114936** in the following tested applications.

The application notes include recommended starting dilutions; optimal dilutions/concentrations should be determined by the end user.

应用	Western blot
	SDS-PAGE
	ELISA

形式 Liquid

补充说明 Protein concentration is above or equal to 0.05 mg/ml.
 Best use within three months from the date of receipt of this protein.

制备和贮存

稳定性和存储

Shipped on dry ice. Upon delivery aliquot and store at -80°C. Avoid freeze / thaw cycles.

pH: 8.00

Constituents: 0.3% Glutathione, 0.79% Tris HCl

常规信息

功能

Antigen-presenting protein that binds self and non-self glycolipids and presents them to T-cell receptors on natural killer T-cells.

组织特异性

Expressed on cortical thymocytes, on certain T-cell leukemias, and in various other tissues.

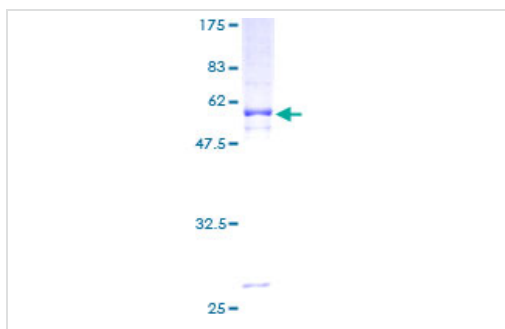
序列相似性

Contains 1 Ig-like (immunoglobulin-like) domain.

细胞定位

Cell membrane. Endosome membrane. Lysosome membrane. Subject to intracellular trafficking between the cell membrane, endosomes and lysosomes.

图片



ab114936 on a 12.5% SDS-PAGE Stained with Coomassie Blue.

SDS-PAGE - CD1d protein (ab114936)

Please note: All products are "FOR RESEARCH USE ONLY AND ARE NOT INTENDED FOR DIAGNOSTIC OR THERAPEUTIC USE"

Our Abpromise to you: Quality guaranteed and expert technical support

- Replacement or refund for products not performing as stated on the datasheet
- Valid for 12 months from date of delivery
- Response to your inquiry within 24 hours
- We provide support in Chinese, English, French, German, Japanese and Spanish
- Extensive multi-media technical resources to help you
- We investigate all quality concerns to ensure our products perform to the highest standards

If the product does not perform as described on this datasheet, we will offer a refund or replacement. For full details of the Abpromise, please visit <http://www.abcam.cn/abpromise> or contact our technical team.

Terms and conditions

- Guarantee only valid for products bought direct from Abcam or one of our authorized distributors