

Product datasheet

Recombinant Human ACCN2 protein ab114681

1 图像

概述

产品名称	重组人ACCN2蛋白
蛋白长度	Full length protein

描述

性质	Recombinant
来源	Wheat germ

氨基酸序列

Accession [P78348](#)

种属 Human

序列
 MELKAEEEVGGVQPVSIQAFASSSTLHGLAHIFSYERLSLKRALWALCF
 LGSLAVLLCVCTERVQYYFHYHHVTKLDEVAASQLTFPAVTL CNLNEFRF
 SQVSKNDLYHAGELLALLNNRYEIPDTQMADEKQLEILQDKANFRSFKPK
 PFNMREFYDRAGHDIRDMLLSCHFRGEVCSAEDFKVVFTRYGKCYTFNSG
 RDGRPRLKTMKGGTGNGLEIMLDIQQDEYLPVWGETDETSFEAGIKVQIH
 SQDEPPFIDQLGFGVAPGFQTFVACQEQRLIYLPPPWTCKAVTMSDLDL
 FFDSYSITACRIDCETRYLVENCNCRMVHMPGDAPYCTPEQYKECADPAL
 DFLVEKDQEYCVCEMPCNLTRYGKELSMVKIPSKASAKYLAKKFNKSEQY
 IGENILVLDIFFEVLNYETIEQKKAYEIAGLLDIGGQMGLFIGASILTV
 LELFDYAYEVIKHKLCRRGKCQKEAKRSSADKGVALLDDVKRHNPCESL
 RGHPAGMTYAANILPHHPARGTFEDFTC

分子量 84 kDa including tags

氨基酸 1 to 528

技术指标

Our [Abpromise guarantee](#) covers the use of **ab114681** in the following tested applications.

The application notes include recommended starting dilutions; optimal dilutions/concentrations should be determined by the end user.

应用	Western blot
	SDS-PAGE
	ELISA

形式 Liquid

补充说明

Protein concentration is above or equal to 0.05 mg/ml.
Best used within three months from the date of receipt.

制备和贮存

稳定性和存储

Shipped on dry ice. Upon delivery aliquot and store at -80°C. Avoid freeze / thaw cycles.

pH: 8.00

Constituents: 0.3% Glutathione, 0.79% Tris HCl

常规信息

功能

Cation channel with high affinity for sodium, which is gated by extracellular protons and inhibited by the diuretic amiloride. Also permeable for Ca(2+), Li(+) and K(+). Generates a biphasic current with a fast inactivating and a slow sustained phase. Mediates glutamate-independent Ca(2+) entry into neurons upon acidosis. This Ca(2+) overloading is toxic for cortical neurons and may be in part responsible for ischemic brain injury. Heteromeric channel assembly seems to modulate channel properties. Functions as a postsynaptic proton receptor that influences intracellular Ca(2+) concentration and calmodulin-dependent protein kinase II phosphorylation and thereby the density of dendritic spines. Modulates activity in the circuits underlying innate fear.

组织特异性

Expressed in most or all neurons.

序列相似性

Belongs to the amiloride-sensitive sodium channel (TC 1.A.6) family. ACCN2 subfamily.

翻译后修饰

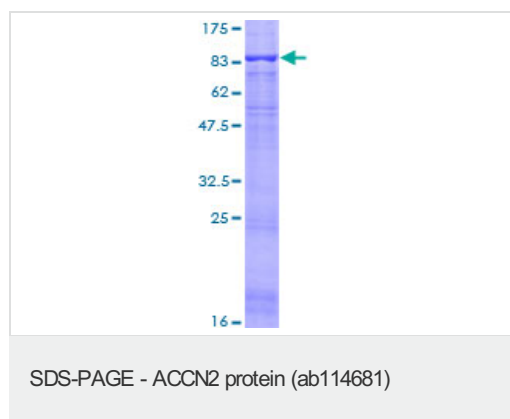
Phosphorylation by PKA regulates interaction with PRKCABP and subcellular location.

Phosphorylation by PKC may regulate the channel.

细胞定位

Cell membrane. Localizes in synaptosomes at dendritic synapses of neurons. Colocalizes with DLG4.

图片



ab114681 analysed on a 12.5% SDS-PAGE gel stained with Coomassie Blue.

Please note: All products are "FOR RESEARCH USE ONLY AND ARE NOT INTENDED FOR DIAGNOSTIC OR THERAPEUTIC USE"

Our Abpromise to you: Quality guaranteed and expert technical support

- Replacement or refund for products not performing as stated on the datasheet
- Valid for 12 months from date of delivery
- Response to your inquiry within 24 hours

- We provide support in Chinese, English, French, German, Japanese and Spanish
- Extensive multi-media technical resources to help you
- We investigate all quality concerns to ensure our products perform to the highest standards

If the product does not perform as described on this datasheet, we will offer a refund or replacement. For full details of the Abpromise, please visit <http://www.abcam.cn/abpromise> or contact our technical team.

Terms and conditions

- Guarantee only valid for products bought direct from Abcam or one of our authorized distributors