

Product datasheet

Recombinant Human 14-3-3 Tau protein ab116444

1 图像

概述

产品名称	Recombinant人14-3-3 Tau protein
蛋白长度	Full length protein

描述

性质	Recombinant
来源	Escherichia coli

氨基酸序列

Accession [P27348](#)

种属 Human

序列  
 MGSSHHHHHSSGLVPRGSHMASMTGGQQMGRGSMEKTELIQKAKLAEQA  
 ERYDDMATCMKAVTEQGAELSNEERNLLSVAYKNVVGRRSAWRVISSIE  
 QKTDTSKQLIKDYREKVESELRSICTTVLELLDKYLIANATNPESKV  
 FYLKMKGDFRYLAEVACGDDRKQTIDNSQGAYQEAFDISKEMQPTHPI  
 RLGLALNFSVFYYEILNPELACTLAKTAFDEAIAELDTLNEDSYKDSTL  
 IMQLLRDNLTLWTSDSAGEECDAAEGAEN

分子量	31 kDa including tags
氨基酸	1 to 245
标签	His tag N-Terminus

技术指标

Our [Abpromise guarantee](#) covers the use of **ab116444** in the following tested applications.

The application notes include recommended starting dilutions; optimal dilutions/concentrations should be determined by the end user.

应用	Mass Spectrometry SDS-PAGE
----	-------------------------------

质谱法 MALDI-TOF-TOF

纯度 > 80 % Purified via His tag.  
 ab116444 was purified via Ni<sup>2+</sup>-NTA agarose columns.

形式 Liquid

补充说明 ab116444 was alkylated, digested with trypsin and the mass of the resultant peptides

determined by MADLI-TOF/TOF mass spectrometry. The peptides obtained gave 64 % sequence coverage of 14-3-3 theta. Theoretical pI: 5.2

## 制备和贮存

### 稳定性和存储

Shipped on dry ice. Upon delivery aliquot and store at -20°C. Avoid freeze / thaw cycles.

pH: 7.50

Constituents: 0.6% HEPES, 0.02% DTT, 50% Glycerol, 0.004% PMSF, 0.012% Benzamidine

## 常规信息

### 功能

Adapter protein implicated in the regulation of a large spectrum of both general and specialized signaling pathways. Binds to a large number of partners, usually by recognition of a phosphoserine or phosphothreonine motif. Binding generally results in the modulation of the activity of the binding partner. Negatively regulates the kinase activity of PDPK1.

### 组织特异性

Abundantly expressed in brain, heart and pancreas, and at lower levels in kidney and placenta. Up-regulated in the lumbar spinal cord from patients with sporadic amyotrophic lateral sclerosis (ALS) compared with controls, with highest levels of expression in individuals with predominant lower motor neuron involvement.

### 序列相似性

Belongs to the 14-3-3 family.

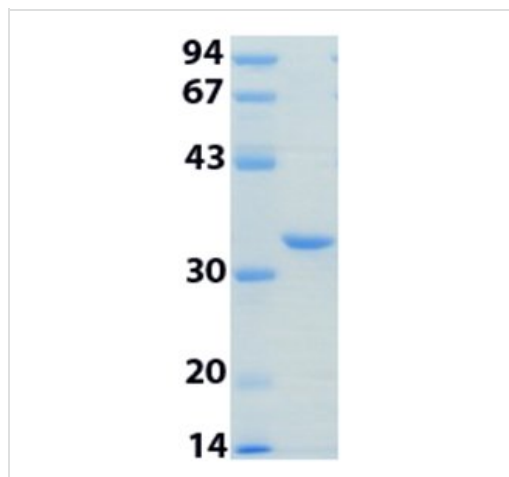
### 翻译后修饰

Ser-232 is probably phosphorylated by CK1.

### 细胞定位

Cytoplasm. In neurons, axonally transported to the nerve terminals.

## 图片



12% SDS-PAGE gel showing ab116444.

SDS-PAGE - 14-3-3 Tau protein (Tagged-His Tag)  
(ab116444)

**Please note:** All products are "FOR RESEARCH USE ONLY AND ARE NOT INTENDED FOR DIAGNOSTIC OR THERAPEUTIC USE"

**Our Abpromise to you: Quality guaranteed and expert technical support**

- Replacement or refund for products not performing as stated on the datasheet
- Valid for 12 months from date of delivery
- Response to your inquiry within 24 hours
  
- We provide support in Chinese, English, French, German, Japanese and Spanish
- Extensive multi-media technical resources to help you
- We investigate all quality concerns to ensure our products perform to the highest standards

If the product does not perform as described on this datasheet, we will offer a refund or replacement. For full details of the Abpromise, please visit <http://www.abcam.cn/abpromise> or contact our technical team.

### **Terms and conditions**

---

- Guarantee only valid for products bought direct from Abcam or one of our authorized distributors