

Product datasheet

Anti-RanBP2 antibody ab64276

★★★★★ 3 Abreviews 11 References 5 图像

概述

产品名称	Anti-RanBP2抗体
描述	兔多克隆抗体to RanBP2
宿主	Rabbit
经测试应用	适用于: WB, IP, ICC/IF
种属反应性	与反应: Human 预测可用于: Cow
免疫原	Synthetic peptide (human) corresponding to 3 times repeated sequence in RanBP2 protein: SKAPKSGFEGMFTKKE , amino acids 1592-1607. Run BLAST with Run BLAST with
阳性对照	HeLa cell lysate and HeLa cells.

性能

形式	Liquid
存放说明	Shipped at 4°C. Store at +4°C short term (1-2 weeks). Store at -20°C or -80°C. Avoid freeze / thaw cycle.
存储溶液	Preservative: 0.09% Sodium Azide Constituents: Whole serum
纯度	Whole antiserum
克隆	多克隆
同种型	IgG

应用

Our [Abpromise guarantee](#) covers the use of **ab64276** in the following tested applications.

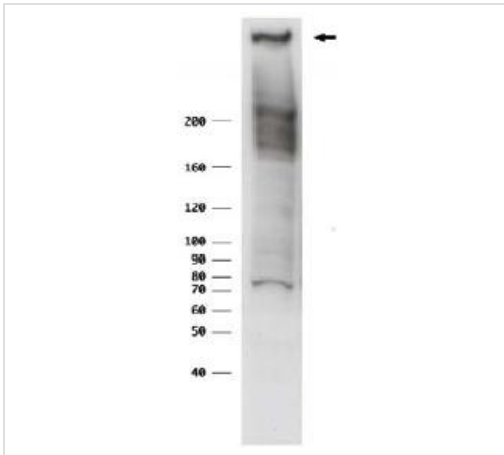
The application notes include recommended starting dilutions; optimal dilutions/concentrations should be determined by the end user.

应用	Ab评论	说明
WB	★★★★☆	1/1000. Detects a band of approximately 358 kDa (predicted molecular weight: 358 kDa).
IP		Use at an assay dependent dilution.
ICC/IF	★★★★★	1/2000.

靶标

功能	E3 SUMO-protein ligase which facilitates SUMO1 and SUMO2 conjugation by UBE2I. Involved in transport factor (Ran-GTP, karyopherin)-mediated protein import via the F-G repeat-containing domain which acts as a docking site for substrates. Could also have isomerase or chaperone activity and may bind RNA or DNA. Component of the nuclear export pathway. Specific docking site for the nuclear export factor exportin-1.
通路	Protein modification; protein sumoylation.
疾病相关	Defects in RANBP2 are the cause of susceptibility to encephalopathy acute necrotizing type 1 (ANE1) [MIM:608033]. A rapidly progressive encephalopathy manifesting in susceptible individuals with seizures and coma. It can occur within days in otherwise healthy children after common viral infections such as influenza and parainfluenza, without evidence of viral infection of the brain or inflammatory cell infiltration. Brain T2-weighted magnetic resonance imaging reveals characteristic symmetric lesions present in the thalami, pons and brainstem.
序列相似性	Contains 1 PPlase cyclophilin-type domain. Contains 4 RanBD1 domains. Contains 8 RanBP2-type zinc fingers. Contains 1 TPR repeat.
结构域	Contains F-X-F-G repeats.
翻译后修饰	Polyubiquitinated by PARK2, which leads to proteasomal degradation.
细胞定位	Nucleus > nuclear pore complex. Cytoplasmic filaments.

图片

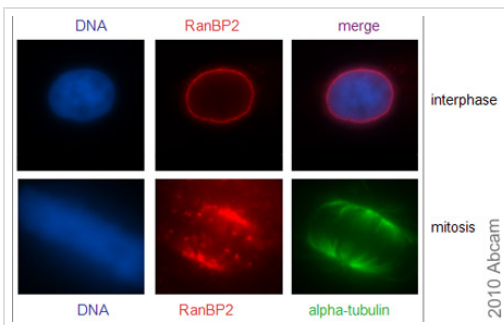


Western blot - RanBP2 antibody (ab64276)

Anti-RanBP2 antibody (ab64276) at 1/1000 dilution + HeLa total cell lysate

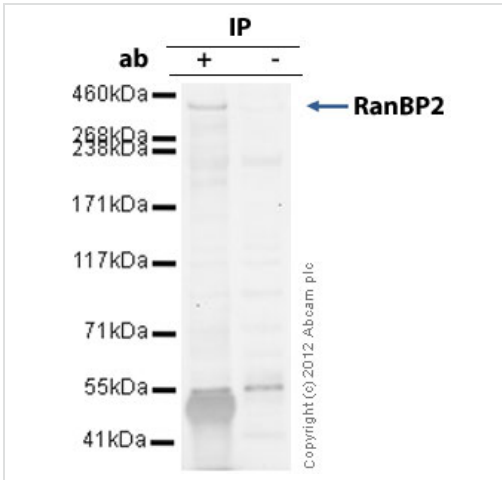
Predicted band size: 358 kDa

Observed band size: 358 kDa



Immunocytochemistry/ Immunofluorescence - RanBP2 antibody (ab64276)

ab64276 (1:2000) staining RanBP2 in HeLa cells pre-extracted in 0.005% digitonin and fixed in 3.7% PFA/30 mM sucrose/PBS for 15 min (room temperature). *Image kindly provided by Patrizia Lavia, Univ. "La Sapienza", CNR, Italy.*



Immunoprecipitation - Anti-RanBP2 antibody (ab64276)

RanBP2 was immunoprecipitated using 0.5mg HeLa whole cell extract, 5µg of Rabbit polyclonal to RanBP2 and 50µl of protein G magnetic beads (+). No antibody was added to the control (-).

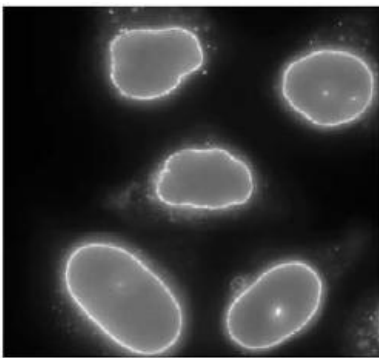
The antibody was incubated under agitation with Protein G beads for 10min, HeLa whole cell extract lysate diluted in RIPA buffer was added to each sample and incubated for a further 10min under agitation.

Proteins were eluted by addition of 40µl SDS loading buffer and incubated for 10min at 70°C; 10µl of each sample was separated on a SDS PAGE gel, transferred to a nitrocellulose membrane, blocked with 5% BSA and probed with ab64276.

Secondary: Mouse monoclonal [SB62a]

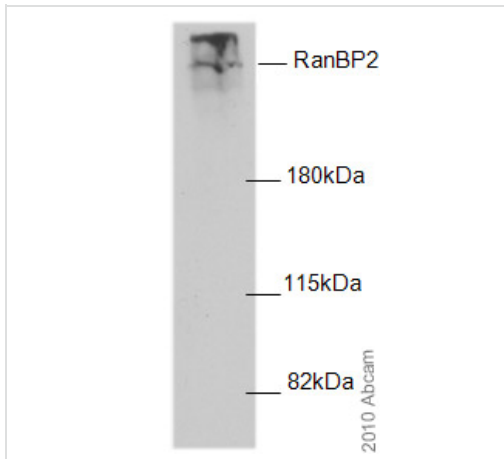
Secondary Antibody to Rabbit IgG light chain (HRP) (ab99697) .

Band: 358kDa: RanBP2.



Immunocytochemistry/ Immunofluorescence - RanBP2 antibody (ab64276)

Immunofluorescent staining of paraformaldehyde fixed HeLa cells by ab64276 (1:2000).



Western blot - RanBP2 antibody (ab64276)

Anti-RanBP2 antibody (ab64276) at 1/2000 dilution + HeLa whole cell lysate

Predicted band size: 358 kDa

Exposure time: 1 minute

WB performed on a 6%SDS-PAGE gel.

Image Kindly provided by Patrizia Lavia, University "La Sapienza", CNR, Italy.

Please note: All products are "FOR RESEARCH USE ONLY AND ARE NOT INTENDED FOR DIAGNOSTIC OR THERAPEUTIC USE"

Our Abpromise to you: Quality guaranteed and expert technical support

- Replacement or refund for products not performing as stated on the datasheet
- Valid for 12 months from date of delivery
- Response to your inquiry within 24 hours
- We provide support in Chinese, English, French, German, Japanese and Spanish
- Extensive multi-media technical resources to help you
- We investigate all quality concerns to ensure our products perform to the highest standards

If the product does not perform as described on this datasheet, we will offer a refund or replacement. For full details of the Abpromise, please visit <http://www.abcam.cn/abpromise> or contact our technical team.

Terms and conditions

- Guarantee only valid for products bought direct from Abcam or one of our authorized distributors