

Product datasheet

Rabbit Anti-Mouse IgG H&L (HRP) ab6728

★★★★★ 5 Abreviews 164 References 4 图像

概述

产品名称	兔抗小鼠IgG H&L (HRP)
描述	兔多克隆抗体二抗to小鼠IgG - H&L (HRP)
宿主	Rabbit
靶标种属	Mouse
经测试应用	适用于: Dot blot, ELISA, IHC-P, IHC-Fr, Immunomicroscopy, ICC/IF, WB
免疫原	Mouse IgG whole molecule
偶联物	HRP

性能

形式	Liquid
存放说明	Shipped at 4°C. Store at +4°C.
存储溶液	pH: 7.20 Preservative: 0.01% Gentamicin sulphate Constituents: 0.42% Potassium phosphate, 0.87% Sodium chloride, 1% BSA
纯度	Affinity purified
纯化说明	This product was prepared from monospecific antiserum by immunoaffinity chromatography using Mouse IgG coupled to agarose beads.
共轭说明	Horseradish Peroxidase (HRP)
克隆	多克隆
同种型	IgG
常规说明	Many of our customers have reported seeing brown precipitates in the vials. The brown precipitates are very common with HRP conjugated antibodies; we suggest vortexing the vial and using this antibody as normal. Our customer's feedback says the antibody worked great. If in case the antibody fails to give results then please contact our Scientific Support team for assistance.

应用

Our [Abpromise guarantee](#) covers the use of **ab6728** in the following tested applications.

The application notes include recommended starting dilutions; optimal dilutions/concentrations should be determined by the end user.

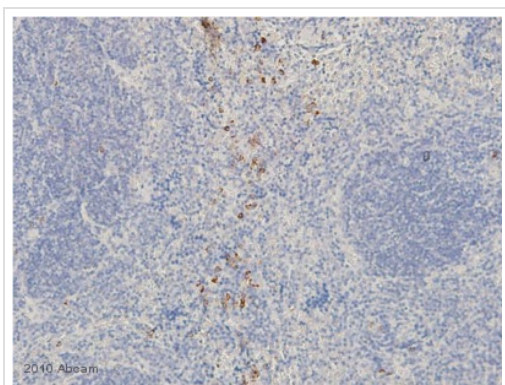
应用	Ab评论	说明
Dot blot		Use at an assay dependent dilution.
ELISA		1/1000.
IHC-P		Use at an assay dependent dilution.
IHC-Fr		Use at an assay dependent dilution.
Immunomicroscopy		Use at an assay dependent dilution.
ICC/IF		1/1000 - 1/5000.
WB	★★★★★	1/2000 - 1/10000. PubMed: 17200442

图片



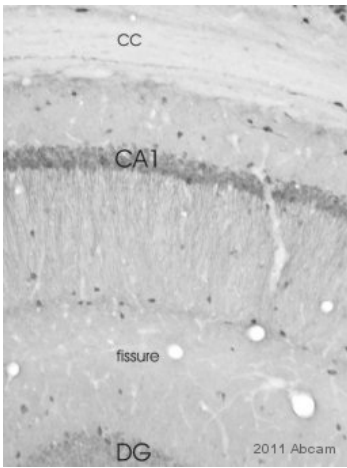
Western blot - Rabbit Anti-Mouse IgG H&L (HRP) (ab6728)

ab6728 was used at dilution 1/2000 with the primary antibody [ab72009](#) in WB. See the review on [ab72009](#).



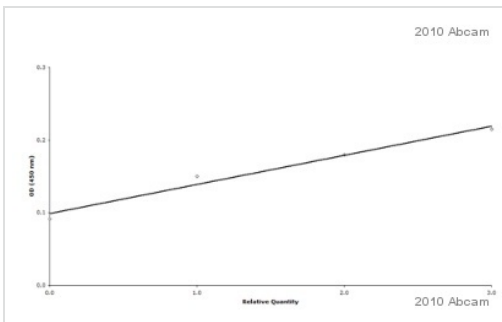
Immunohistochemistry (Formalin/PFA-fixed paraffin-embedded sections) - Rabbit polyclonal Secondary Antibody to Mouse IgG - H&L (HRP) (ab6728)

Ab6728 was used at dilution 1/200 with the primary antibody [ab81785](#) in IHC-P. See the review on [ab81785](#).



Ab6728 was used at dilution 1/500 with the primary antibody [ab3089](#) in IHC-Fr (PFA perfusion). See the review on [ab3089](#).

Immunohistochemistry (PFA perfusion fixed frozen sections) - Rabbit polyclonal Secondary Antibody to Mouse IgG - H&L (HRP) (ab6728)



Ab6728 was used at dilution 1/1000 with the primary antibody [ab11038](#) in ELISA. See the review on [ab11038](#).

ELISA - Rabbit polyclonal Secondary Antibody to Mouse IgG - H&L (HRP) (ab6728)

Please note: All products are "FOR RESEARCH USE ONLY AND ARE NOT INTENDED FOR DIAGNOSTIC OR THERAPEUTIC USE"

Our Abpromise to you: Quality guaranteed and expert technical support

- Replacement or refund for products not performing as stated on the datasheet
- Valid for 12 months from date of delivery
- Response to your inquiry within 24 hours
- We provide support in Chinese, English, French, German, Japanese and Spanish
- Extensive multi-media technical resources to help you
- We investigate all quality concerns to ensure our products perform to the highest standards

If the product does not perform as described on this datasheet, we will offer a refund or replacement. For full details of the Abpromise, please visit <http://www.abcam.cn/abpromise> or contact our technical team.

Terms and conditions

- Guarantee only valid for products bought direct from Abcam or one of our authorized distributors