

Product datasheet

Anti-RPS18 antibody ab91293

1 Abreviews 2 References 2 图像

概述

产品名称	Anti-RPS18抗体
描述	兔多克隆抗体to RPS18
宿主	Rabbit
经测试应用	适用于: ELISA, IHC-P, WB
种属反应性	与反应: Mouse, Rat, Human
免疫原	Synthetic peptide selected from the center region of Human RPS18, conjugated to KLH (NP_072045.1; P62269).
阳性对照	Mouse spleen tissue lysate This antibody gave a positive result in IHC in the following FFPE tissue: Human normal liver.

性能

形式	Liquid
存放说明	Shipped at 4°C. Upon delivery aliquot and store at -20°C. Avoid repeated freeze / thaw cycles.
存储溶液	Preservative: 0.09% Sodium Azide Constituents: PBS
纯度	Immunogen affinity purified
纯化说明	ab91293 is purified through a Protein A column, followed by peptide affinity purification.
克隆	多克隆
同种型	IgG

应用

Our [Abpromise guarantee](#) covers the use of **ab91293** in the following tested applications.

The application notes include recommended starting dilutions; optimal dilutions/concentrations should be determined by the end user.

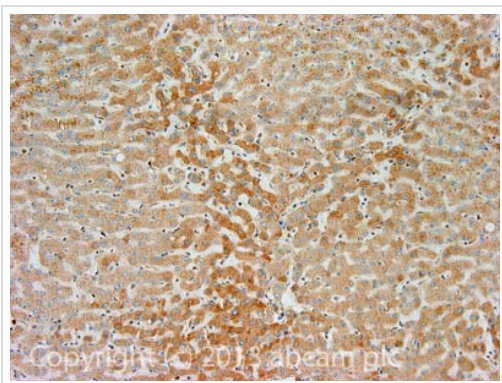
应用	Ab评论	说明
ELISA		1/1000.

应用	Ab评论	说明
IHC-P		Use a concentration of 5 µg/ml. Perform heat mediated antigen retrieval with citrate buffer pH 6 before commencing with IHC staining protocol.
WB		1/100 - 1/500. Predicted molecular weight: 18 kDa.

靶标

功能	Located at the top of the head of the 40S subunit, it contacts several helices of the 18S rRNA.
序列相似性	Belongs to the ribosomal protein S13P family.
细胞定位	Cytoplasm.

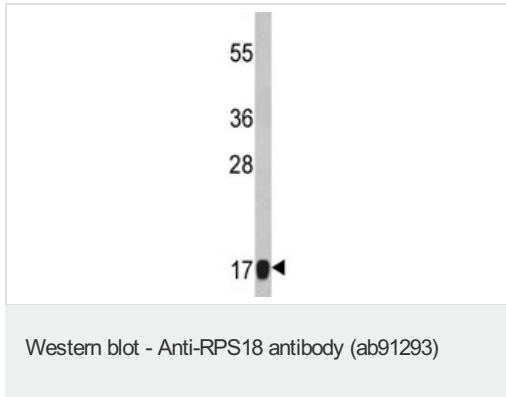
图片



Immunohistochemistry (Formalin/PFA-fixed paraffin-embedded sections) - Anti-RPS18 antibody (ab91293)

IHC image of RPS18 staining in Human normal liver formalin fixed paraffin embedded tissue section, performed on a Leica Bond™ system using the standard protocol F. The section was pre-treated using heat mediated antigen retrieval with sodium citrate buffer (pH6, epitope retrieval solution 1) for 20 mins. The section was then incubated with ab91293, 5µg/ml, for 15 mins at room temperature and detected using an HRP conjugated compact polymer system. DAB was used as the chromogen. The section was then counterstained with haematoxylin and mounted with DPX.

For other IHC staining systems (automated and non-automated) customers should optimize variable parameters such as antigen retrieval conditions, primary antibody concentration and antibody incubation times.



Anti-RPS18 antibody (ab91293) at 1/100
dilution + Mouse spleen tissue lysate at 35 µg

Predicted band size: 18 kDa

Please note: All products are "FOR RESEARCH USE ONLY AND ARE NOT INTENDED FOR DIAGNOSTIC OR THERAPEUTIC USE"

Our Abpromise to you: Quality guaranteed and expert technical support

- Replacement or refund for products not performing as stated on the datasheet
- Valid for 12 months from date of delivery
- Response to your inquiry within 24 hours
- We provide support in Chinese, English, French, German, Japanese and Spanish
- Extensive multi-media technical resources to help you
- We investigate all quality concerns to ensure our products perform to the highest standards

If the product does not perform as described on this datasheet, we will offer a refund or replacement. For full details of the Abpromise, please visit <http://www.abcam.cn/abpromise> or contact our technical team.

Terms and conditions

- Guarantee only valid for products bought direct from Abcam or one of our authorized distributors