


Product datasheet

Anti-RPS16 antibody ab26159

★★★★☆ 1 Abreviews 7 References 4 图像

概述

产品名称	Anti-RPS16抗体
描述	兔多克隆抗体to RPS16
经测试应用	适用于: WB, IHC-P, ICC/IF
种属反应性	与反应: Human, Chinese hamster 预测可用于: Mouse, Rat, Cow, Dog, Pig, Zebrafish 
免疫原	A region within a synthetic peptide: MPSKGPLQSV QVFGRKKTAT AVAHCKRGNG LIKVNGRPLE MIEPRTLQYK, corresponding to N terminal amino acids 1-50 of Human RPS16 Run BLAST with ExPASy Run BLAST with NCBI
阳性对照	Jurkat cell lysate

性能

形式	Liquid
存放说明	Shipped at 4°C. Upon delivery aliquot and store at -20°C or -80°C. Avoid repeated freeze / thaw cycles.
存储溶液	Preservative: None Constituents: 2% Sucrose, PBS
纯度	Protein A purified
克隆	多克隆
同种型	IgG

应用

Our [Abpromise guarantee](#) covers the use of **ab26159** in the following tested applications.

The application notes include recommended starting dilutions; optimal dilutions/concentrations should be determined by the end user.

应用	Ab评论	说明
WB	★★★★☆	Use a concentration of 1.25 µg/ml. Predicted molecular weight: 16 kDa. Good results were obtained when blocked with 5% non-fat dry milk in 0.05% PBS-T.

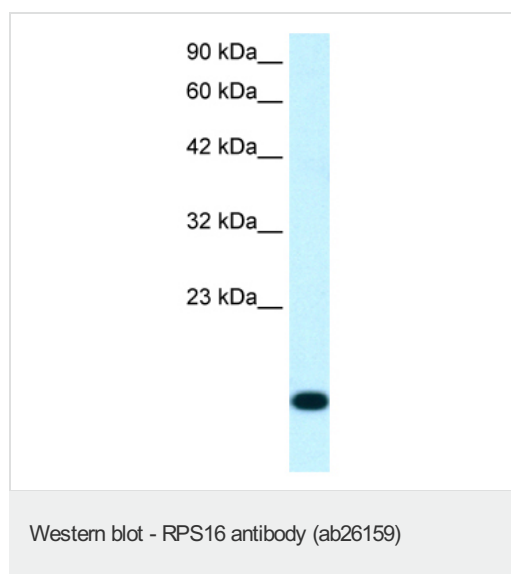
应用	Ab评论	说明
IHC-P		Use at an assay dependent concentration.
ICC/IF		Use a concentration of 5 µg/ml.

靶标

相关性

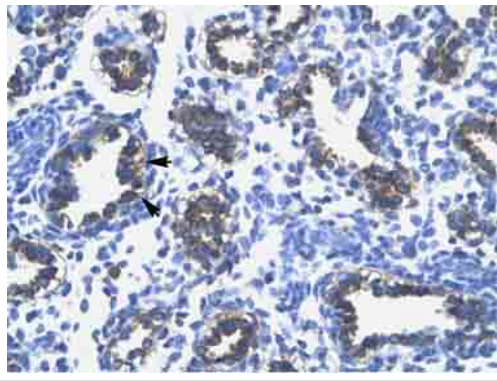
Ribosomes, the organelles that catalyze protein synthesis, consist of a small 40S subunit and a large 60S subunit. Together these subunits are composed of 4 RNA species and approximately 80 structurally distinct proteins. RPS16 is a ribosomal protein that is a component of the 40S subunit. The protein belongs to the S9P family of ribosomal proteins. It is located in the cytoplasm. As is typical for genes encoding ribosomal proteins, there are multiple processed pseudogenes of this gene dispersed through the genome.

图片



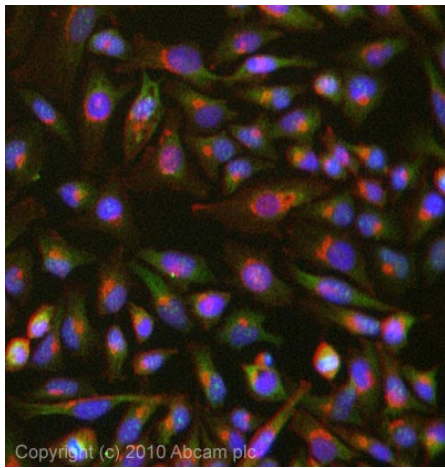
Anti-RPS16 antibody (ab26159) at 1.25 µg/ml
+ Jurkat cell lysate

Predicted band size : 16 kDa



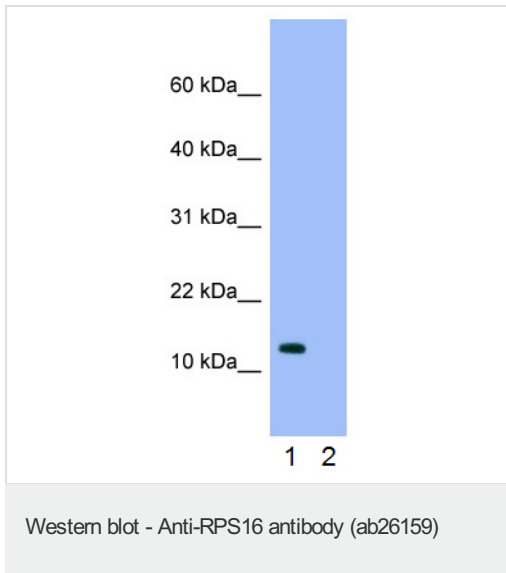
Immunohistochemistry (Formalin/PFA-fixed paraffin-embedded sections) - Anti-RPS16 antibody (ab26159)

Staining of human lung tissue with ab26159 (4-8 ug/ml). Positive labelled alveolar cells are indicated with arrows. 400X magnification.



Immunocytochemistry/ Immunofluorescence-RPS16 antibody(ab26159)

ICC/IF image of ab26159 stained HeLa cells. The cells were 4% formaldehyde fixed (10 min) and then incubated in 1%BSA / 10% normal goat serum / 0.3M glycine in 0.1% PBS-Tween for 1h to permeabilise the cells and block non-specific protein-protein interactions. The cells were then incubated with the antibody (ab26159, 5µg/ml) overnight at +4°C. The secondary antibody (green) was Alexa Fluor® 488 goat anti-rabbit IgG (H+L) used at a 1/1000 dilution for 1h. Alexa Fluor® 594 WGA was used to label plasma membranes (red) at a 1/200 dilution for 1h. DAPI was used to stain the cell nuclei (blue) at a concentration of 1.43µM.



All lanes : Anti-RPS16 antibody (ab26159) at 2.5 µg/ml

Lane 1 : Jurkat cell lysate

Lane 2 : Jurkat cell lysate with blocking peptide at 2 µg/ml

Lysates/proteins at 25 µg per lane.

Predicted band size : 16 kDa

Please note: All products are "FOR RESEARCH USE ONLY AND ARE NOT INTENDED FOR DIAGNOSTIC OR THERAPEUTIC USE"

Our Abpromise to you: Quality guaranteed and expert technical support

- Replacement or refund for products not performing as stated on the datasheet
- Valid for 12 months from date of delivery
- Response to your inquiry within 24 hours
- We provide support in Chinese, English, French, German, Japanese and Spanish
- Extensive multi-media technical resources to help you
- We investigate all quality concerns to ensure our products perform to the highest standards

If the product does not perform as described on this datasheet, we will offer a refund or replacement. For full details of the Abpromise, please visit <http://www.abcam.cn/abpromise> or contact our technical team.

Terms and conditions

- Guarantee only valid for products bought direct from Abcam or one of our authorized distributors