


Product datasheet

Anti-RPA32/RPA2 antibody ab10359

3 References 3 图像

概述

产品名称	Anti-RPA32/RPA2抗体
描述	兔多克隆抗体to RPA32/RPA2
宿主	Rabbit
经测试应用	适用于: IP, WB, IHC-P
种属反应性	与反应: Mouse, Human 预测可用于: Rabbit, Horse, Pig, Chimpanzee, Rhesus monkey, Gorilla, Bat, Elephant 
免疫原	Immunogen was a synthetic peptide, which represented a portion of the C-terminus of human replication protein A2, 32 kDa subunit (LocusLink ID 6118).
阳性对照	Whole cell extract from HeLa cells. This antibody gave a positive result in IHC in the following FFPE tissue: Human normal liver.

性能

形式	Liquid
存放说明	Shipped at 4°C. Upon delivery aliquot and store at -20°C. Avoid freeze / thaw cycles.
存储溶液	Preservative: 0.1% Sodium Azide Constituents: 8mM PBS, 60mM Citrate, 150mM Tris, pH 7-8
纯度	Immunogen affinity purified
克隆	多克隆
同种型	IgG

应用

Our [Abpromise guarantee](#) covers the use of **ab10359** in the following tested applications.

The application notes include recommended starting dilutions; optimal dilutions/concentrations should be determined by the end user.

应用	Ab评论	说明
IP		Use at 2-5 µg/mg of lysate.

应用	Ab评论	说明
WB		1/500 - 1/2500. Detects a band of approximately 32 kDa (predicted molecular weight: 32 kDa).
IHC-P		Use a concentration of 1 µg/ml. Perform heat mediated antigen retrieval with citrate buffer pH 6 before commencing with IHC staining protocol.

靶标

功能

Required for DNA recombination, repair and replication. The activity of RP-A is mediated by single-stranded DNA binding and protein interactions. Functions as component of the alternative replication protein A complex (aRPA). aRPA binds single-stranded DNA and probably plays a role in DNA repair; it does not support chromosomal DNA replication and cell cycle progression through S-phase. In vitro, aRPA cannot promote efficient priming by DNA polymerase alpha but supports DNA polymerase delta synthesis in the presence of PCNA and replication factor C (RFC), the dual incision/excision reaction of nucleotide excision repair and RAD51-dependent strand exchange.

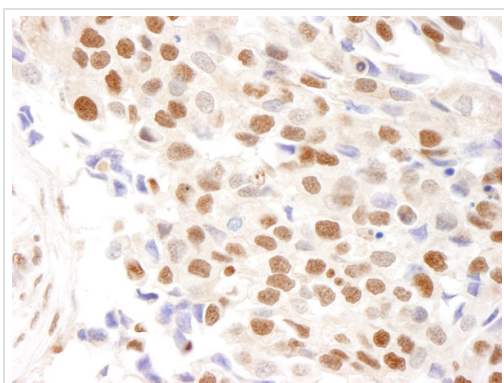
翻译后修饰

Phosphorylated in a cell-cycle-dependent manner (from the S phase until mitosis). Phosphorylated by ATR upon DNA damage, which promotes its translocation to nuclear foci. Can be phosphorylated in vitro by PRKDC/DNA-PK in the presence of Ku and DNA, and by CDK1.

细胞定位

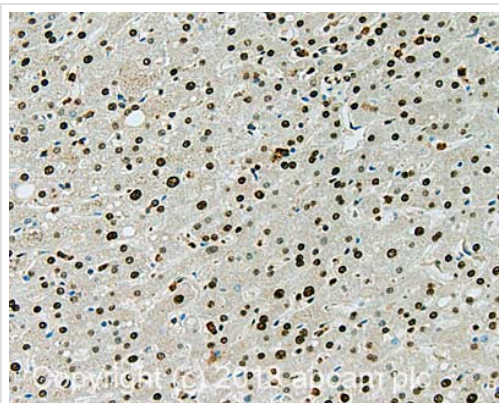
Nucleus. Nucleus > PML body. Also present in PML nuclear bodies. Redistributes to discrete nuclear foci upon DNA damage.

图片



Immunohistochemistry (Formalin/PFA-fixed paraffin-embedded sections) analysis of human breast carcinoma tissue labelling RPA32/RPA2 with ab10359 at 1/5000 (0.2µg/ml). Detection: DAB.

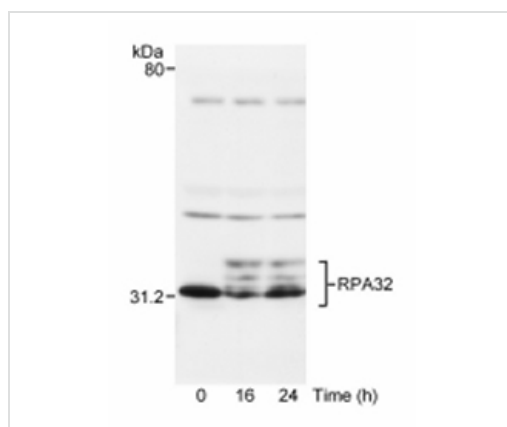
Immunohistochemistry (Formalin/PFA-fixed paraffin-embedded sections) - Anti-RPA32/RPA2 antibody (ab10359)



Immunohistochemistry (Formalin/PFA-fixed paraffin-embedded sections) - Anti-RPA32/RPA2 antibody (ab10359)

IHC image of RPA32/RPA2 staining in Human normal liver formalin fixed paraffin embedded tissue section, performed on a Leica Bond™ system using the standard protocol F. The section was pre-treated using heat mediated antigen retrieval with sodium citrate buffer (pH6, epitope retrieval solution 1) for 20 mins. The section was then incubated with ab10359, 1µg/ml, for 15 mins at room temperature and detected using an HRP conjugated compact polymer system. DAB was used as the chromogen. The section was then counterstained with haematoxylin and mounted with DPX.

For other IHC staining systems (automated and non-automated) customers should optimize variable parameters such as antigen retrieval conditions, primary antibody concentration and antibody incubation times.



Western blot - Anti-RPA32/RPA2 antibody (ab10359)

ab10359 detection of RPA32 by Western Blot. Samples: Whole cell extract (75 µg) from asynchronously growing HeLa cells treated with 10 J/m² UV radiation for the indicated period of time.

ab10359 detection of RPA32 by Western Blot. Samples: Whole cell extract (75 µg) from asynchronously growing HeLa cells treated with 10 J/m² UV radiation for the indicated period of time.

Please note: All products are "FOR RESEARCH USE ONLY AND ARE NOT INTENDED FOR DIAGNOSTIC OR THERAPEUTIC USE"

Our Abpromise to you: Quality guaranteed and expert technical support

- Replacement or refund for products not performing as stated on the datasheet
- Valid for 12 months from date of delivery

- Response to your inquiry within 24 hours
- We provide support in Chinese, English, French, German, Japanese and Spanish
- Extensive multi-media technical resources to help you
- We investigate all quality concerns to ensure our products perform to the highest standards

If the product does not perform as described on this datasheet, we will offer a refund or replacement. For full details of the Abpromise, please visit <http://www.abcam.cn/abpromise> or contact our technical team.

Terms and conditions

- Guarantee only valid for products bought direct from Abcam or one of our authorized distributors