


Product datasheet

Anti-RILP antibody ab54559

1 References 1 图像

概述

产品名称	Anti-RILP抗体
描述	兔多克隆抗体to RILP
宿主	Rabbit
经测试应用	适用于: WB, ELISA
种属反应性	与反应: Recombinant fragment 预测可用于: Human 
免疫原	Synthetic peptide corresponding to C terminal residues of human RILP.
阳性对照	transient ever-expressed cell line

性能

形式	Liquid
存放说明	Shipped at 4°C. Upon delivery aliquot and store at -20°C. Avoid freeze / thaw cycles.
存储溶液	Preservative: 0.01% Sodium Azide Constituents: 50% Glycerol, PBS
纯度	Immunogen affinity purified
纯化说明	Purified by antigen specific affinity chromatography.
克隆	多克隆
同种型	IgG

应用

Our [Abpromise guarantee](#) covers the use of **ab54559** in the following tested applications.

The application notes include recommended starting dilutions; optimal dilutions/concentrations should be determined by the end user.

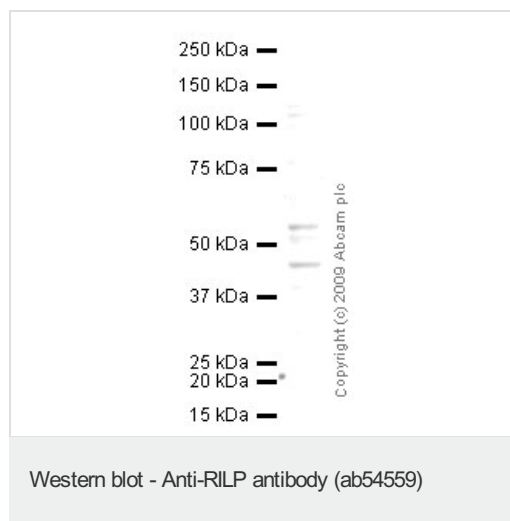
应用	Ab 评论	说明

应用	Ab 评论	说明
WB		Use a concentration of 1 µg/ml. Detects a band of approximately 45 kDa (predicted molecular weight: 44 kDa). for 2 hours. This antibody has been tested in Western blot against the recombinant peptide used as an immunogen. We have no data on detection of endogenous protein.
ELISA		Use at an assay dependent dilution.

靶标

功能	Rab effector playing a role in late endocytic transport to degradative compartments. Involved in the regulation of lysosomal morphology and distribution. Induces recruitment of dynein-dynactin motor complexes to Rab7A-containing late endosome and lysosome compartments. Promotes centripetal migration of phagosomes and the fusion of phagosomes with the late endosomes and lysosomes.
组织特异性	Ubiquitous. Strongly expressed in fetal heart, heart, stomach, spleen, adrenal gland, thyroid gland, salivary gland, fetal liver, liver and lung. Poorly expressed in brain.
序列相似性	Contains 1 RILP-like domain.
细胞定位	Endomembrane system. Late endosome membrane. Lysosome membrane. Cytoplasmic vesicle > phagosome membrane. Associated with late endosomal, lysosomal and phagosomal membranes. The interaction with RAB7A is necessary for its recruitment to phagosomes.

图片



Anti-RILP antibody (ab54559) at 1 µg/ml +
HeLa (Human epithelial carcinoma cell line)
Whole Cell Lysate at 10 µg

Secondary

Goat polyclonal to Rabbit IgG - H&L - Pre-Adsorbed (HRP) at 1/3000 dilution

Predicted band size: 44 kDa

Observed band size: 44 kDa

Additional bands at: 55 kDa. We are unsure as to the identity of these extra bands.

Please note: All products are "FOR RESEARCH USE ONLY AND ARE NOT INTENDED FOR DIAGNOSTIC OR THERAPEUTIC USE"

Our Abpromise to you: Quality guaranteed and expert technical support

- Replacement or refund for products not performing as stated on the datasheet
- Valid for 12 months from date of delivery
- Response to your inquiry within 24 hours

- We provide support in Chinese, English, French, German, Japanese and Spanish
- Extensive multi-media technical resources to help you
- We investigate all quality concerns to ensure our products perform to the highest standards

If the product does not perform as described on this datasheet, we will offer a refund or replacement. For full details of the Abpromise, please visit <http://www.abcam.cn/abpromise> or contact our technical team.

Terms and conditions

- Guarantee only valid for products bought direct from Abcam or one of our authorized distributors