

Product datasheet

Anti-REG1 alpha antibody ab47099

1 References 1 图像

概述

产品名称	Anti-REG1 alpha抗体
描述	兔多克隆抗体to REG1 alpha
特异性	This antibody is specific for REG 1 alpha. It was tested in a sandwich ELISA with antigens: Reg 1beta, PAP=(REG III), and Reg IV. We did not detect any crossreactivity.
经测试应用	适用于: IHC-P, ELISA, IP, WB
种属反应性	与反应: Human
免疫原	Recombinant human REG 1 alpha. A 17.8 kDa protein containing 144 amino acid residues of the human REG 1 alpha and 12 additional amino acid residues, HisTag. Source of immunogen <i>E.coli</i>
阳性对照	recombinant protein

性能

形式	Liquid
存放说明	Shipped at 4°C. Store at +4°C short term (1-2 weeks). Upon delivery aliquot. Store at -20°C or -80°C. Avoid freeze / thaw cycle.
存储溶液	Preservative: None Constituents: 0.1M Sodium chloride, 0.05M PBS, pH 7.2
纯度	Immunogen affinity purified
纯化说明	Immunoaffinity chromatography on a column with immobilized recombinant human REG 1 alpha.
克隆	多克隆
同种型	IgG

应用

Our [Abpromise guarantee](#) covers the use of **ab47099** in the following tested applications.

The application notes include recommended starting dilutions; optimal dilutions/concentrations should be determined by the end user.

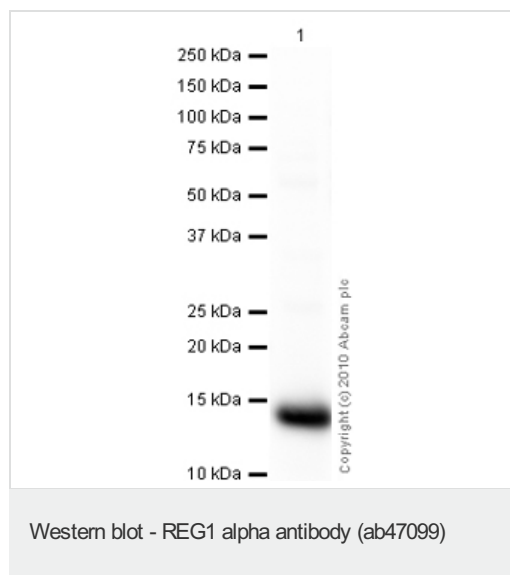
应用	Ab评论	说明
IHC-P		Use at an assay dependent concentration.

应用	Ab评论	说明
ELISA		Use at an assay dependent concentration.
IP		Use at an assay dependent concentration.
WB		Use a concentration of 1 µg/ml. Detects a band of approximately 14 kDa (predicted molecular weight: 19 kDa).

## 靶标

<b>功能</b>	Might act as an inhibitor of spontaneous calcium carbonate precipitation. May be associated with neuronal sprouting in brain, and with brain and pancreas regeneration.
<b>组织特异性</b>	In pancreatic acinar cells and, in lower levels, in brain. Enhanced expression of PSP-related transcripts and intraneuronal accumulation of PSP-like proteins is found in brain from Alzheimer disease and Down syndrome patients.
<b>序列相似性</b>	Contains 1 C-type lectin domain.
<b>发展阶段</b>	High expression levels in fetal and infant brains; much lower in adult brains.
<b>翻译后修饰</b>	The composition of the O-linked carbohydrate on Thr-27 is complex and varied. In the crystallographic structure, the attached sugar appears to be N-acetylglucosamine, typical of an intracellular protein, rather than N-acetylgalactosamine.
<b>细胞定位</b>	Secreted.

## 图片



Anti-REG1 alpha antibody (ab47099) at 1 µg/ml + Human pancreas tissue lysate - total protein (ab29816) at 10 µg

### Secondary

Goat Anti-Rabbit IgG H&L (HRP) preadsorbed (ab97080) at 1/5000 dilution

Developed using the ECL technique

Performed under reducing conditions.

**Predicted band size** : 19 kDa

**Exposure time** : 30 seconds

**Please note:** All products are "FOR RESEARCH USE ONLY AND ARE NOT INTENDED FOR DIAGNOSTIC OR THERAPEUTIC USE"

## **Our Abpromise to you: Quality guaranteed and expert technical support**

---

- Replacement or refund for products not performing as stated on the datasheet
- Valid for 12 months from date of delivery
- Response to your inquiry within 24 hours
  
- We provide support in Chinese, English, French, German, Japanese and Spanish
- Extensive multi-media technical resources to help you
- We investigate all quality concerns to ensure our products perform to the highest standards

If the product does not perform as described on this datasheet, we will offer a refund or replacement. For full details of the Abpromise, please visit <http://www.abcam.cn/abpromise> or contact our technical team.

## **Terms and conditions**

---

- Guarantee only valid for products bought direct from Abcam or one of our authorized distributors