


Product datasheet

Anti-REA antibody ab71970

2 References 2 图像

概述

产品名称	Anti-REA抗体
描述	兔多克隆抗体to REA
宿主	Rabbit
经测试应用	适用于: ICC/IF, WB, IP
种属反应性	与反应: Mouse, Human 预测可用于: Rat, Rabbit, Horse, Guinea pig, Cow, Dog, Pig, Rhesus monkey, Gorilla, Orangutan, Elephant 
免疫原	Synthetic peptide corresponding to a region between residues 225 and 275 of human REA (NP_009204.1)
阳性对照	HeLa, 293T and NIH3T3 whole cell lysates.

性能

形式	Liquid
存放说明	Shipped at 4°C. Upon delivery aliquot and store at -20°C. Avoid freeze / thaw cycles.
存储溶液	Preservative: 0.09% Sodium Azide Constituents: 0.1% BSA, Tris buffered saline
纯度	Immunogen affinity purified
克隆	多克隆
同种型	IgG

应用

Our [Abpromise guarantee](#) covers the use of **ab71970** in the following tested applications.

The application notes include recommended starting dilutions; optimal dilutions/concentrations should be determined by the end user.

应用	Ab评论	说明
ICC/IF		Use a concentration of 5 µg/ml.
WB		1/1000 - 1/10000. Detects a band of approximately 37 kDa (predicted molecular weight: 37 kDa).

应用	Ab评论	说明
IP		Use at 1-4 µg/mg of lysate.

靶标

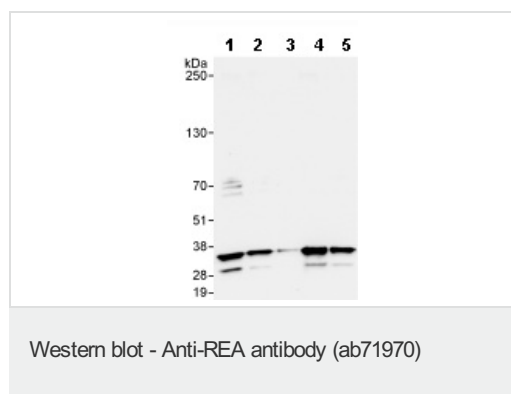
功能 Acts as a mediator of transcriptional repression by nuclear hormone receptors via recruitment of histone deacetylases (By similarity). Functions as an estrogen receptor (ER)-selective coregulator that potentiates the inhibitory activities of antiestrogens and represses the activity of estrogens. Competes with NCOA1 for modulation of ER transcriptional activity. Probably involved in regulating mitochondrial respiration activity and in aging.

序列相似性 Belongs to the prohibitin family.

发展阶段 Levels of expression in fibroblasts decrease heterogeneously during cellular aging.

细胞定位 Mitochondrion inner membrane. Cytoplasm. Nucleus. Also cytoplasmic and nuclear.

图片



All lanes : Anti-REA antibody (ab71970) at 0.04 µg/ml

Lane 1 : HeLa whole cell lysate at 50 µg

Lane 2 : HeLa whole cell lysate at 15 µg

Lane 3 : HeLa whole cell lysate at 5 µg

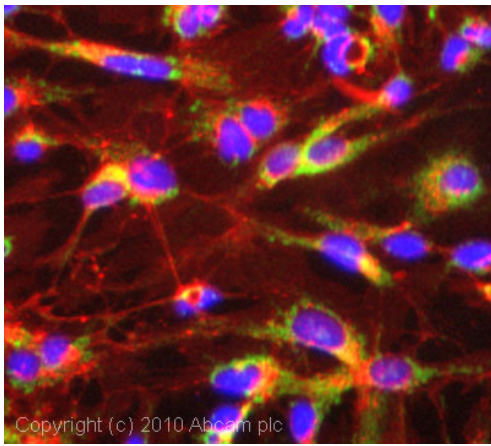
Lane 4 : 293T whole cell lysate at 50 µg

Lane 5 : NIH3T3 whole cell lysate at 50 µg

Predicted band size: 37 kDa

Observed band size: 37 kDa

Additional bands at: 30 kDa. We are unsure as to the identity of these extra bands.



Immunocytochemistry/ Immunofluorescence - Anti-RECA antibody (ab71970)

ICC/IF image of ab71970 stained HepG2 cells. The cells were 4% formaldehyde fixed (10 min) and then incubated in 1%BSA / 10% normal goat serum / 0.3M glycine in 0.1% PBS-Tween for 1h to permeabilise the cells and block non-specific protein-protein interactions. The cells were then incubated with the antibody (ab71970, 5µg/ml) overnight at +4°C. The secondary antibody (green) was Alexa Fluor® 488 goat anti-rabbit IgG (H+L) used at a 1/1000 dilution for 1h. Alexa Fluor® 594 WGA was used to label plasma membranes (red) at a 1/200 dilution for 1h. DAPI was used to stain the cell nuclei (blue) at a concentration of 1.43µM.

Please note: All products are "FOR RESEARCH USE ONLY AND ARE NOT INTENDED FOR DIAGNOSTIC OR THERAPEUTIC USE"

Our Abpromise to you: Quality guaranteed and expert technical support

- Replacement or refund for products not performing as stated on the datasheet
- Valid for 12 months from date of delivery
- Response to your inquiry within 24 hours
- We provide support in Chinese, English, French, German, Japanese and Spanish
- Extensive multi-media technical resources to help you
- We investigate all quality concerns to ensure our products perform to the highest standards

If the product does not perform as described on this datasheet, we will offer a refund or replacement. For full details of the Abpromise, please visit <http://www.abcam.cn/abpromise> or contact our technical team.

Terms and conditions

- Guarantee only valid for products bought direct from Abcam or one of our authorized distributors