

Product datasheet

Anti-RACK1 antibody ab62735

★★★★☆ 1 Abreviews 4 References 1 图像

概述

产品名称	Anti-RACK1抗体
描述	兔多克隆抗体to RACK1
宿主	Rabbit
经测试应用	适用于: WB, IP, ICC/IF
种属反应性	与反应: Mouse, Rat, Human 预测可用于: Chicken, Cow, Pig, Xenopus laevis, Cynomolgus monkey
免疫原	Synthetic peptide: TEQMTLRGT LKGHNG - C , conjugated to KLH by a C terminal Cysteine residue linker, corresponding to N terminal amino acids 2-16 of Human RACK1 Run BLAST with Run BLAST with
阳性对照	Paraformaldehyde-fixed HeLa cells, HEK-293T cell lysate.

性能

形式	Liquid
存放说明	Shipped at 4°C. Store at +4°C short term (1-2 weeks). Upon delivery aliquot. Store at -20°C or -80°C. Avoid freeze / thaw cycle.
存储溶液	Preservative: 15mM Sodium Azide Constituents: 0.01M PBS, pH 7.4
纯度	IgG fraction
纯化说明	The antiserum was fractionated and further purified by ion-exchange chromatography to provide the IgG fraction of antiserum that is essentially free of other rabbit serum proteins.
克隆	多克隆
同种型	IgG

应用

Our [Abpromise guarantee](#) covers the use of **ab62735** in the following tested applications.

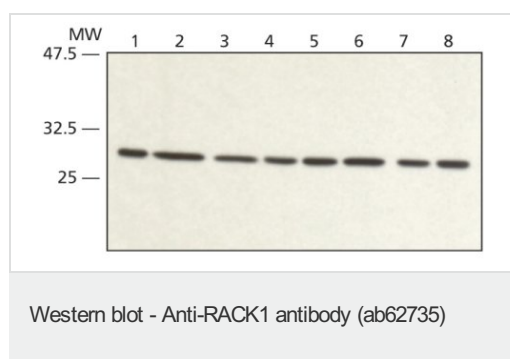
The application notes include recommended starting dilutions; optimal dilutions/concentrations should be determined by the end user.

应用	Ab评论	说明
WB	★★★★☆	1/500 - 1/1000. Detects a band of approximately 30 kDa (predicted molecular weight: 35 kDa).
IP		Use at an assay dependent dilution. Use 5-10 µL.
ICC/IF		1/100 - 1/200.

靶标

功能	Seems to bind protein kinase C acting as an intracellular receptor to anchor the activated PKC to the cytoskeleton. May be involved in up-regulation of the activity of kinases such as PKC via binding to KRT1. Together with KRT1 and ITGB1, serves as a platform for SRC activation or inactivation. May play an important role in the developing brain and neuronal differentiation.
序列相似性	Belongs to the WD repeat G protein beta family. Contains 7 WD repeats.
结构域	The WD repeats domain 5 mediates interaction with TRIM63.
细胞定位	Cell membrane. Located on plasma membrane of neuroblastoma NMB7 cells.

图片



All lanes : Anti-RACK1 antibody (ab62735)
at 1/500 dilution

Lane 1 : Extract from hek-293T cell line

Lane 2 : Extract from HeLa cell line

Lane 3 : Extract from MCF7 cell line

Lane 4 : Extract from U2OS cell line

Lane 5 : Extract from Jurkat cell line

Lane 6 : Extract from RAT1 cell line

Lane 7 : Extract from PC12 cell line

Lane 8 : Extract from NIH3T3 cell line

Secondary

All lanes : Goat Anti-Rabbit IgG

Developed using the ECL technique.

Predicted band size: 35 kDa

Observed band size: 30 kDa

Please note: All products are "FOR RESEARCH USE ONLY AND ARE NOT INTENDED FOR DIAGNOSTIC OR THERAPEUTIC USE"

Our Abpromise to you: Quality guaranteed and expert technical support

- Replacement or refund for products not performing as stated on the datasheet
- Valid for 12 months from date of delivery
- Response to your inquiry within 24 hours

- We provide support in Chinese, English, French, German, Japanese and Spanish
- Extensive multi-media technical resources to help you
- We investigate all quality concerns to ensure our products perform to the highest standards

If the product does not perform as described on this datasheet, we will offer a refund or replacement. For full details of the Abpromise, please visit <http://www.abcam.cn/abpromise> or contact our technical team.

Terms and conditions

- Guarantee only valid for products bought direct from Abcam or one of our authorized distributors