


Product datasheet

Anti-QK1 antibody ab15338

1 图像

概述

产品名称	Anti-QK1抗体
描述	兔多克隆抗体to QK1
经测试应用	适用于: WB
种属反应性	与反应: Human 预测可用于: Mouse, Rat, Rabbit, Horse, Chicken, Guinea pig, Cow, Dog, Turkey, Pig, Xenopus laevis, Chimpanzee, Rhesus monkey, Gorilla, Orangutan, Platypus 
免疫原	The details of the immunogen for this antibody are not available.

性能

形式	Liquid
存放说明	Shipped at 4°C. Upon delivery aliquot and store at -20°C. Avoid freeze / thaw cycles.
存储溶液	Preservative: 0.1% Sodium Azide Constituents: 8mM PBS, 60mM Citrate, 150mM Tris, pH 7-8
纯度	Immunogen affinity purified
克隆	多克隆
同种型	IgG

应用

Our [Abpromise guarantee](#) covers the use of **ab15338** in the following tested applications. The application notes include recommended starting dilutions; optimal dilutions/concentrations should be determined by the end user.

应用	Ab评论	说明
WB		1/1000 - 1/5000. Detects a band of approximately 39 kDa.

靶标

功能 RNA-binding protein that plays a central role in myelination (PubMed:16641098). Binds to the 5'-NACUAAAY-N(1,20)-UAAAY-3' RNA core sequence. Regulates target mRNA stability (PubMed:23630077). In addition, acts by regulating pre-mRNA splicing, mRNA export and

protein translation. Required to protect and promote stability of mRNAs such as MBP and CDKN1B. Regulator of oligodendrocyte differentiation and maturation in the brain that may play a role in myelin and oligodendrocyte dysfunction in schizophrenia (PubMed:16641098). Participates in mRNA transport by regulating the nuclear export of MBP mRNA. Also involved in regulation of mRNA splicing of MAG pre-mRNA. Acts as a translational repressor.

组织特异性

Expressed in the frontal cortex of brain. Down-regulated in the brain of schizophrenic patients.

序列相似性

Contains 1 KH domain.

结构域

The KH domain and the Qua2 region are involved in RNA binding.

翻译后修饰

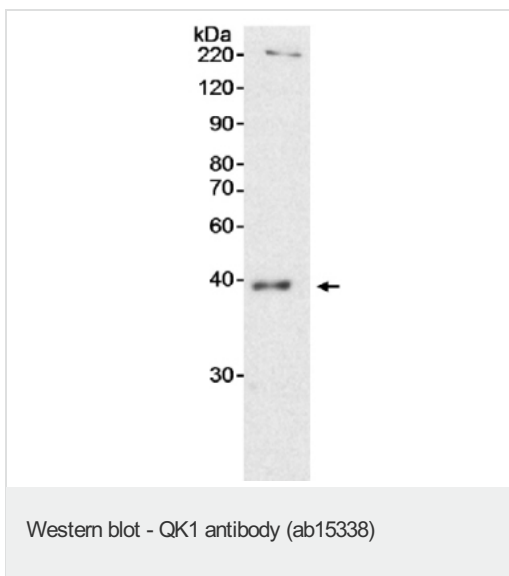
Methylated by PRMT1.

Tyrosine phosphorylated at its C-terminus, probably by FYN. Phosphorylation leads to decreased mRNA-binding affinity, affecting transport and/or stabilization of MBP mRNA.

细胞定位

Nucleus. Cytoplasm.

Anti-QK1 antibody 图像



Rabbit polyclonal to QK1 (ab15338) at 1/5000.

Lane 1: 20 µg HeLa cell nuclear extract

Detection: chemiluminescence with an exposure time of 15 minutes.

Please note: All products are "FOR RESEARCH USE ONLY AND ARE NOT INTENDED FOR DIAGNOSTIC OR THERAPEUTIC USE"

Our Abpromise to you: Quality guaranteed and expert technical support

- Replacement or refund for products not performing as stated on the datasheet
- Valid for 12 months from date of delivery
- Response to your inquiry within 24 hours
- We provide support in Chinese, English, French, German, Japanese and Spanish
- Extensive multi-media technical resources to help you
- We investigate all quality concerns to ensure our products perform to the highest standards

If the product does not perform as described on this datasheet, we will offer a refund or replacement. For full details of the Abpromise, please visit <http://www.abcam.cn/abpromise> or contact our technical team.

Terms and conditions

- Guarantee only valid for products bought direct from Abcam or one of our authorized distributors