

Product datasheet

Anti-Protein Phosphatase 1 beta antibody [AF9B12] ab80942

1 图像

概述

产品名称	Anti-Protein Phosphatase 1 beta抗体[AF9B12]
描述	小鼠单克隆抗体[AF9B12] to Protein Phosphatase 1 beta
特异性	ab80942 does not cross react with PPP1C alpha and PPP1C gamma.
经测试应用	适用于: WB
种属反应性	与反应: Mouse, Rat, Human
免疫原	Recombinant human Protein Phosphatase 1 beta purified from E.coli (His-Protein Phosphatase 1 beta)
阳性对照	Jurkat, MOLT4, HT29, A431, SKNSH, PC12 and NIH3T3 cell lysates.

性能

形式	Liquid
存放说明	Shipped at 4°C. Upon delivery aliquot and store at -20°C. Avoid freeze / thaw cycles.
存储溶液	Preservative: 0.03% Sodium Azide Constituents: 50% Glycerol, 0.01% BSA, HEPES, 0.15M Sodium chloride
纯度	Ammonium Sulphate Precipitation
克隆	单克隆
克隆编号	AF9B12
同种型	IgG2a
轻链类型	kappa

应用

Our [Abpromise guarantee](#) covers the use of **ab80942** in the following tested applications.

The application notes include recommended starting dilutions; optimal dilutions/concentrations should be determined by the end user.

应用	Ab评论	说明
WB		Use at an assay dependent dilution. Detects a band of approximately 37 kDa (predicted molecular weight: 37 kDa).

靶标

功能

Protein phosphatase that associates with over 200 regulatory proteins to form highly specific holoenzymes which dephosphorylate hundreds of biological targets. Protein phosphatase (PP1) is essential for cell division, it participates in the regulation of glycogen metabolism, muscle contractility and protein synthesis. Involved in regulation of ionic conductances and long-term synaptic plasticity. Component of the PTW/PP1 phosphatase complex, which plays a role in the control of chromatin structure and cell cycle progression during the transition from mitosis into interphase. In balance with CSNK1D and CSNK1E, determines the circadian period length, through the regulation of the speed and rhythmicity of PER1 and PER2 phosphorylation. May dephosphorylate CSNK1D and CSNK1E. Dephosphorylates the 'Ser-418' residue of FOXP3 in regulatory T-cells (Treg) from patients with rheumatoid arthritis, thereby inactivating FOXP3 and rendering Treg cells functionally defective (PubMed:23396208).

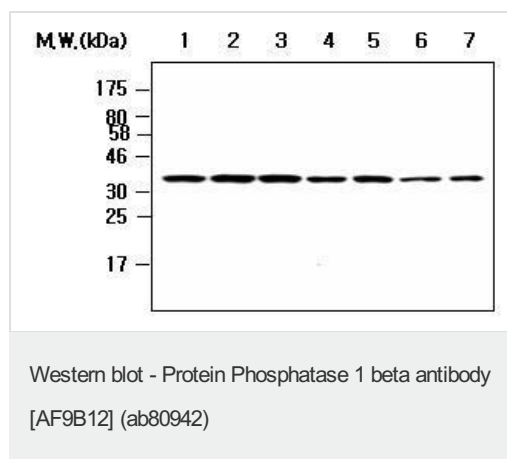
序列相似性

Belongs to the PPP phosphatase family. PP-1 subfamily.

细胞定位

Cytoplasm. Nucleus. Nucleus, nucleoplasm. Nucleus, nucleolus. Highly mobile in cells and can be relocalized through interaction with targeting subunits. In the presence of PPP1R8 relocalizes from the nucleus to nuclear speckles.

图片



All lanes : Anti-Protein Phosphatase 1 beta antibody [AF9B12] (ab80942)

Lane 1 : Jurkat cell lysate

Lane 2 : MOLT4 cell lysate

Lane 3 : HT29 cell lysate

Lane 4 : A431 cell lysate

Lane 5 : SKNSH cell lysate

Lane 6 : PC12 cell lysate

Lane 7 : NIH3T3 cell lysate

Predicted band size : 37 kDa

Observed band size : 37 kDa

Please note: All products are "FOR RESEARCH USE ONLY AND ARE NOT INTENDED FOR DIAGNOSTIC OR THERAPEUTIC USE"

Our Abpromise to you: Quality guaranteed and expert technical support

- Replacement or refund for products not performing as stated on the datasheet
- Valid for 12 months from date of delivery
- Response to your inquiry within 24 hours
- We provide support in Chinese, English, French, German, Japanese and Spanish
- Extensive multi-media technical resources to help you
- We investigate all quality concerns to ensure our products perform to the highest standards

If the product does not perform as described on this datasheet, we will offer a refund or replacement. For full details of the Abpromise, please visit <http://www.abcam.cn/abpromise> or contact our technical team.

Terms and conditions

- Guarantee only valid for products bought direct from Abcam or one of our authorized distributors