

Product datasheet

Anti-Proprotein Convertase 2 antibody ab85261

1 图像

概述

产品名称	Anti-Proprotein Convertase 2抗体
描述	兔多克隆抗体to Proprotein Convertase 2
宿主	Rabbit
经测试应用	适用于: WB, ELISA
种属反应性	与反应: Human
免疫原	Synthetic peptide selected from an internal region of Human Proprotein Convertase 2 conjugated to KLH (NP_002585).
阳性对照	K-562 cell line lysate.

性能

形式	Liquid
存放说明	Shipped at 4°C. Upon delivery aliquot and store at -20°C. Avoid freeze / thaw cycles.
存储溶液	Preservative: 0.09% Sodium Azide Constituents: PBS
纯度	Ammonium Sulphate Precipitation
纯化说明	ab85261 is prepared by Saturated Ammonium Sulfate (SAS) precipitation followed by dialysis against PBS.
克隆	多克隆
同种型	IgG

应用

Our [Abpromise guarantee](#) covers the use of **ab85261** in the following tested applications.

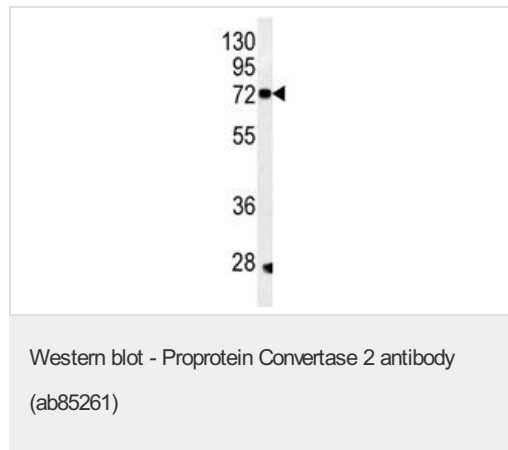
The application notes include recommended starting dilutions; optimal dilutions/concentrations should be determined by the end user.

应用	Ab评论	说明
WB		1/50 - 1/100. Detects a band of approximately 72 kDa (predicted molecular weight: 70 kDa).
ELISA		1/1000.

## 靶标

功能	Involves in the processing of hormone and other protein precursors at sites comprised of pairs of basic amino acid residues.
序列相似性	Belongs to the peptidase S8 family. Furin subfamily.
细胞定位	Cytoplasmic vesicle > secretory vesicle. Localized in the secretion granules.

## 图片



Anti-Proprotein Convertase 2 antibody (ab85261) at 1/50 dilution + K-562 cell line lysates at 35 µg

**Predicted band size:** 70 kDa

**Observed band size:** 72 kDa

**Additional bands at:** 28 kDa. We are unsure as to the identity of these extra bands.

**Please note:** All products are "FOR RESEARCH USE ONLY AND ARE NOT INTENDED FOR DIAGNOSTIC OR THERAPEUTIC USE"

## Our Abpromise to you: Quality guaranteed and expert technical support

- Replacement or refund for products not performing as stated on the datasheet
- Valid for 12 months from date of delivery
- Response to your inquiry within 24 hours
- We provide support in Chinese, English, French, German, Japanese and Spanish
- Extensive multi-media technical resources to help you
- We investigate all quality concerns to ensure our products perform to the highest standards

If the product does not perform as described on this datasheet, we will offer a refund or replacement. For full details of the Abpromise, please visit <http://www.abcam.cn/abpromise> or contact our technical team.

## Terms and conditions

- Guarantee only valid for products bought direct from Abcam or one of our authorized distributors