

Product datasheet

Anti-Polycystin 1 antibody [7e12] ab74115

1 Abreviews 9 References 4 图像

概述

产品名称	Anti-Polycystin 1抗体[7e12]
描述	小鼠单克隆抗体[7e12] to Polycystin 1
经测试应用	适用于: IHC-P, Flow Cyt, ICC/IF 不适用于: WB
种属反应性	与反应: Mouse, Rat, Dog, Human
免疫原	Bacterially expressed fusion protein from the N-terminal leucine rich domain of human Polycystin 1.
表位	This antibody was produced to the flank-leucine rich repeat-flank region (24-180aa).
阳性对照	This antibody gave a positive signal when used to probe a Human Liver, bone marrow, and KidneyTissue section (IHC).
常规说明	This antibody clone is manufactured by Abcam.

性能

形式	Liquid
存放说明	Shipped at 4°C. Upon delivery aliquot and store at -20°C or -80°C. Avoid repeated freeze / thaw cycles.
存储溶液	Preservative: 0.02% Sodium Azide Constituents: PBS, pH 7.4
纯度	IgG fraction
克隆	单克隆
克隆编号	7e12
骨髓瘤	NS1
同种型	IgG1
轻链类型	kappa

应用

Our [Abpromise guarantee](#) covers the use of **ab74115** in the following tested applications.

The application notes include recommended starting dilutions; optimal dilutions/concentrations should be determined by the end user.

应用	Ab评论	说明
IHC-P		Use a concentration of 5 µg/ml.
Flow Cyt		Use 1-2µg for 10 ⁶ cells. ab170190 -Mouse monoclonal IgG1, is suitable for use as an isotype control with this antibody.
ICC/IF		Use a concentration of 5 µg/ml.

应用说明 Is unsuitable for WB.

靶标

功能 May be an ion-channel regulator. PKD1 and PKD2 may function through a common signaling pathway that is necessary for normal tubulogenesis. Involved in adhesive protein-protein and protein-carbohydrate interactions.

疾病相关 Defects in PKD1 are the cause of polycystic kidney disease autosomal dominant type 1 (ADPKD1) [MIM:173900]. ADPKD is characterized by progressive formation and enlargement of cysts in both kidneys, typically leading to end-stage renal disease in adult life. Cysts also occurs in the liver and other organs. Its prevalence is estimated at about 1/1000.

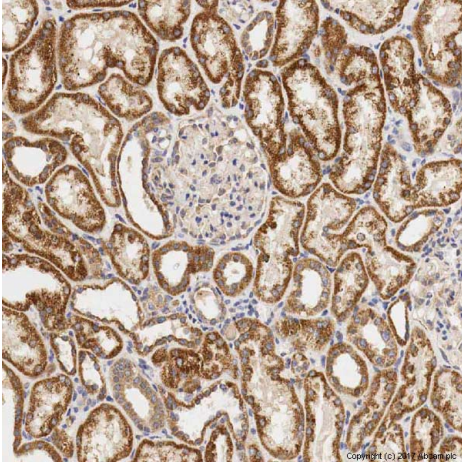
序列相似性

- Belongs to the polycystin family.
- Contains 1 C-type lectin domain.
- Contains 1 GPS domain.
- Contains 1 LDL-receptor class A domain.
- Contains 2 LRR (leucine-rich) repeats.
- Contains 1 LRRCT domain.
- Contains 1 LRRNT domain.
- Contains 17 PKD domains.
- Contains 1 PLAT domain.
- Contains 1 REJ domain.
- Contains 1 WSC domain.

结构域 The LDL-receptor class A domain is atypical; the potential calcium-binding site is missing.

细胞定位 Membrane.

图片

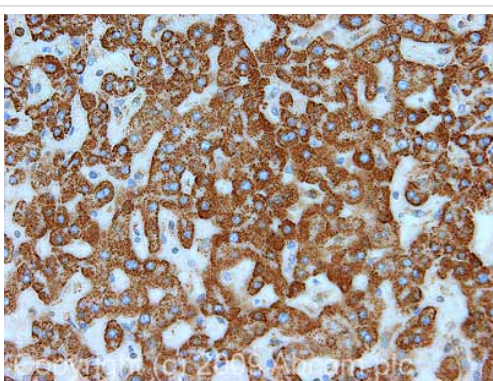


Immunohistochemistry (Formalin/PFA-fixed paraffin-embedded sections) - Anti-Polycystin 1 antibody [7e12] (ab74115)

IHC image of Polycystin 1 staining in a formalin fixed, paraffin embedded normal human kidney tissue section*, performed on a Leica Bond™ system using the standard protocol F. The section was pre-treated using heat mediated antigen retrieval with sodium citrate buffer (pH6, epitope retrieval solution 1) for 20 mins. The section was then incubated with ab74115, 5µg/ml, for 15 mins at room temperature and detected using an HRP conjugated compact polymer system. DAB was used as the chromogen. The section was then counterstained with haematoxylin and mounted with DPX.

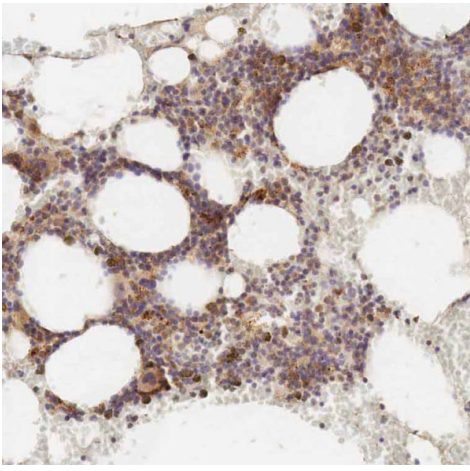
For other IHC staining systems (automated and non-automated) customers should optimize variable parameters such as antigen retrieval conditions, primary antibody concentration and antibody incubation times.

*Tissue obtained from the Human Research Tissue Bank, supported by the NIHR Cambridge Biomedical Research Centre



Immunohistochemistry (Formalin/PFA-fixed paraffin-embedded sections) - Polycystin 1 antibody [7e12] (ab74115)

IHC image of Polycystin 1 staining in Human Normal Liver FFPE section, performed on a Bond™ system using the standard protocol F. The section was pre-treated using heat mediated antigen retrieval with sodium citrate buffer (pH6, epitope retrieval solution 1) for 20 mins. The section was then incubated with ab74115, 5µg/ml, for 15 mins at room temperature and detected using an HRP conjugated compact polymer system. DAB was used as the chromogen. The section was then counterstained with haematoxylin and mounted with DPX

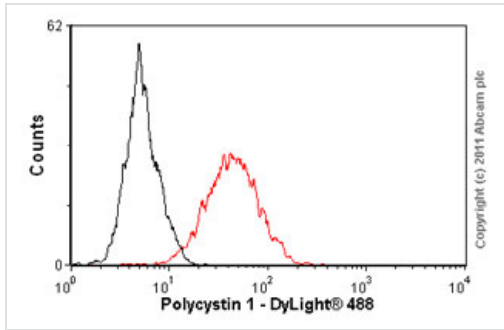


Immunohistochemistry (Formalin/PFA-fixed paraffin-embedded sections) - Anti-Polycystin 1 antibody [7e12] (ab74115)

IHC image of Polycystin 1 staining in Normal Human Bone Marrow formalin fixed paraffin embedded tissue section*, performed on a Leica Bond™ system using the standard protocol F. The section was pre-treated using heat mediated antigen retrieval with sodium citrate buffer (pH6, epitope retrieval solution 1) for 20 mins. The section was then incubated with ab74115, 5µg/ml, for 15 mins at room temperature and detected using an HRP conjugated compact polymer system. DAB was used as the chromogen. The section was then counterstained with haematoxylin and mounted with DPX.

For other IHC staining systems (automated and non-automated) customers should optimize variable parameters such as antigen retrieval conditions, primary antibody concentration and antibody incubation times.

**Tissue obtained from the Human Research Tissue Bank, supported by the NIHR Cambridge Biomedical Research Centre*



Flow Cytometry-Anti-Polycystin 1 antibody [7e12]
(ab74115)

Overlay histogram showing HEK293 cells stained with ab74115 (red line). The cells were fixed with 4% paraformaldehyde (10 min) and then permeabilized with 0.1% PBS-Tween for 20 min. The cells were then incubated in 1x PBS / 10% normal goat serum / 0.3M glycine to block non-specific protein-protein interactions. The cells were then incubated with the antibody (ab74115, 2µg/1x10⁶ cells) for 30 min at 22°C. The secondary antibody used was DyLight® 488 goat anti-mouse IgG (H+L) (ab96879) at 1/500 dilution for 30 min at 22°C. Isotype control antibody (black line) was mouse IgG1 [ICIGG1] (ab91353, 2µg/1x10⁶ cells) used under the same conditions. Acquisition of >5,000 events was performed. This antibody gave a positive signal in HEK293 cells fixed with 80% methanol (5 min)/permeabilized in 0.1% PBS-Tween used under the same conditions.

Please note: All products are "FOR RESEARCH USE ONLY AND ARE NOT INTENDED FOR DIAGNOSTIC OR THERAPEUTIC USE"

Our Abpromise to you: Quality guaranteed and expert technical support

- Replacement or refund for products not performing as stated on the datasheet
- Valid for 12 months from date of delivery
- Response to your inquiry within 24 hours
- We provide support in Chinese, English, French, German, Japanese and Spanish
- Extensive multi-media technical resources to help you
- We investigate all quality concerns to ensure our products perform to the highest standards

If the product does not perform as described on this datasheet, we will offer a refund or replacement. For full details of the Abpromise, please visit <http://www.abcam.cn/abpromise> or contact our technical team.

Terms and conditions

- Guarantee only valid for products bought direct from Abcam or one of our authorized distributors