

Product datasheet

Anti-Placental Protein 14 / Glycodelin A antibody [EP870Y]
ab53289

重组 RabMAb

1 References 2 图像

概述

产品名称	Anti-Placental蛋白14 / Glycodelin A抗体[EP870Y]
描述	兔单克隆抗体[EP870Y] to Placental蛋白14 / Glycodelin A
宿主	Rabbit
经测试应用	适用于: WB, IHC-P 不适用于: Flow Cyt or IP
种属反应性	与反应: Human
免疫原	A synthetic peptide corresponding to residues near the C-terminal of human PAEP/PEG.
阳性对照	Placenta tissue K562 treated with TPA
常规说明	This product is a recombinant rabbit monoclonal antibody. Mouse, Rat: We have preliminary internal testing data to indicate this antibody may not react with these species. Please contact us for more information. Our RabMAb [®] technology is a patented hybridoma-based technology for making rabbit monoclonal antibodies. For details on our patents, please refer to RabMAb[®] patents

性能

形式	Liquid
存放说明	Shipped at 4°C. Store at -20°C. Stable for 12 months at -20°C.
存储溶液	PBS 49%,Sodium azide 0.01%,Glycerol 50%,BSA 0.05%
纯度	Tissue culture supernatant
克隆	单克隆
克隆编号	EP870Y
同种型	IgG

应用

Our [Abpromise guarantee](#) covers the use of **ab53289** in the following tested applications.

The application notes include recommended starting dilutions; optimal dilutions/concentrations should be determined by the end user.

应用	Ab评论	说明
WB		1/1000 - 1/10000. Detects a band of approximately 21 kDa (predicted molecular weight: 21 kDa).
IHC-P		Use at an assay dependent concentration.

应用说明 Is unsuitable for Flow Cyt or IP.

靶标

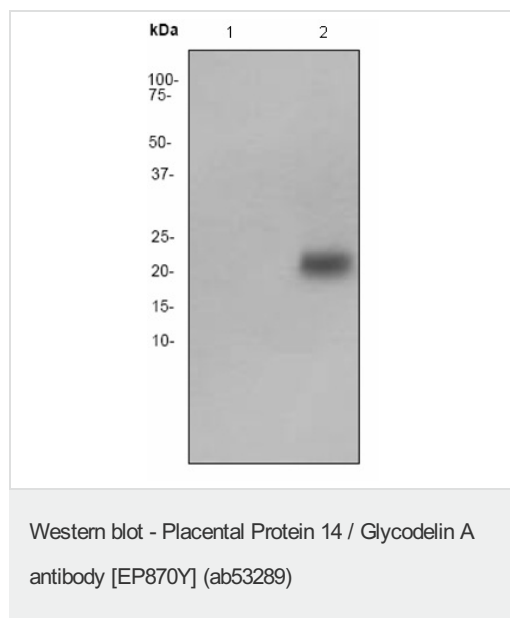
功能 This protein is, quantitatively, the main protein synthesized and secreted in the endometrium from mid-luteal phase of the menstrual cycle and during the first semester of pregnancy.

序列相似性 Belongs to the calycin superfamily. Lipocalin family.

翻译后修饰 At least two differentially glycosylated forms are found. Glycodelin-A (GdA) (amniotic fluid) with contraceptive and immunosuppressive activities and glycodelin-S (Gds) (seminal plasma) whose role is not yet known. The gender-specific glycosylation may serve to regulate key process involved in human reproduction.

细胞定位 Secreted.

图片



All lanes : Anti-Placental Protein 14 / Glycodelin A antibody [EP870Y] (ab53289) at 1/500 dilution

Lane 1 : K562

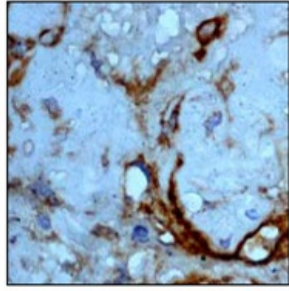
Lane 2 : K562 + TPA treatment

Secondary

All lanes : Goat anti-rabbit HRP labeled at 1/2000 dilution

Predicted band size: 21 kDa

Observed band size: 21 kDa



Placenta stained with ab53289 at 1/100 -
1/250 dilution

Immunohistochemistry (Formalin/PFA-fixed paraffin-
embedded sections) - Anti-Placental Protein 14 /
Glycodelin A antibody [EP870Y] (ab53289)

Please note: All products are "FOR RESEARCH USE ONLY AND ARE NOT INTENDED FOR DIAGNOSTIC OR THERAPEUTIC USE"

Our Abpromise to you: Quality guaranteed and expert technical support

- Replacement or refund for products not performing as stated on the datasheet
- Valid for 12 months from date of delivery
- Response to your inquiry within 24 hours
- We provide support in Chinese, English, French, German, Japanese and Spanish
- Extensive multi-media technical resources to help you
- We investigate all quality concerns to ensure our products perform to the highest standards

If the product does not perform as described on this datasheet, we will offer a refund or replacement. For full details of the Abpromise, please visit <http://www.abcam.cn/abpromise> or contact our technical team.

Terms and conditions

- Guarantee only valid for products bought direct from Abcam or one of our authorized distributors