


Product datasheet

Anti-Pin1 antibody ab113946

1 图像

概述

产品名称	Anti-Pin1抗体
描述	兔多克隆抗体to Pin1
宿主	Rabbit
经测试应用	适用于: IP 不适用于: WB
种属反应性	与反应: Human 预测可用于: Mouse, Rat, Horse, Guinea pig, Cow, Dog, Pig, Chimpanzee, Rhesus monkey, Orngutan 
免疫原	Synthetic peptide, corresponding to a region within amino acids 50-100 of Human Pin1 (NP_006212.1).
阳性对照	HeLa whole cell lysate.

性能

形式	Liquid
存放说明	Shipped at 4°C. Upon delivery aliquot and store at -20°C. Avoid freeze / thaw cycles.
存储溶液	Preservative: 0.09% Sodium azide Constituent: 99% Tris citrate/phosphate Note: pH 7 to 8
纯度	Immunogen affinity purified
克隆	多克隆
同种型	IgG

应用

Our [Abpromise guarantee](#) covers the use of **ab113946** in the following tested applications.

The application notes include recommended starting dilutions; optimal dilutions/concentrations should be determined by the end user.

应用	Ab评论	说明
IP		Use at 10 µg/mg of lysate.

应用说明

Is unsuitable for WB.

靶标

功能

Essential PPlase that regulates mitosis presumably by interacting with NIMA and attenuating its mitosis-promoting activity. Displays a preference for an acidic residue N-terminal to the isomerized proline bond. Catalyzing pSer/Thr-Pro cis/trans isomerizations.

序列相似性

Contains 1 PpiC domain.

Contains 1 WW domain.

结构域

The WW domain is required for the interaction with STIL and KIF20B.

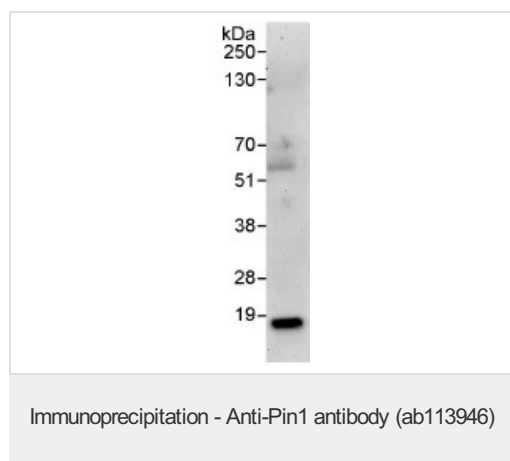
翻译后修饰

Phosphorylated upon DNA damage, probably by ATM or ATR.

细胞定位

Nucleus.

图片



Detection of Pin1 in Immunoprecipitates of HeLa whole cell lysate (1 mg for IP, 20% of IP loaded) using ab113946 at 10 µg/mg lysate for IP. An anti-Pin1 antibody which recognizes a downstream epitope was used at 1 µg/ml for subsequent western blot detection. Detection: Chemiluminescence with exposure time of 3 minutes.

Please note: All products are "FOR RESEARCH USE ONLY AND ARE NOT INTENDED FOR DIAGNOSTIC OR THERAPEUTIC USE"

Our Abpromise to you: Quality guaranteed and expert technical support

- Replacement or refund for products not performing as stated on the datasheet
- Valid for 12 months from date of delivery
- Response to your inquiry within 24 hours
- We provide support in Chinese, English, French, German, Japanese and Spanish
- Extensive multi-media technical resources to help you
- We investigate all quality concerns to ensure our products perform to the highest standards

If the product does not perform as described on this datasheet, we will offer a refund or replacement. For full details of the Abpromise, please visit <http://www.abcam.cn/abpromise> or contact our technical team.

Terms and conditions

- Guarantee only valid for products bought direct from Abcam or one of our authorized distributors