

Product datasheet

Anti-PYGM antibody ab63158

1 References 2 图像

概述

产品名称	Anti-PYGM抗体
描述	兔多克隆抗体to PYGM
经测试应用	适用于: WB, ELISA, IHC-P
种属反应性	与反应: Human
免疫原	Synthetic peptide conjugated to KLH from the C terminal region of human PYGM.
阳性对照	WB: 293 cell lysate. IHC-P: Human skeletal muscle.

性能

形式	Liquid
存放说明	Shipped at 4°C. Store at +4°C short term (1-2 weeks). Upon delivery aliquot. Store at -20°C or -80°C. Avoid freeze / thaw cycle.
存储溶液	Preservative: 0.09% Sodium Azide Constituents: PBS
纯度	Protein A purified
纯化说明	This antibody is purified through a protein A column, eluted with high and low pH buffers and neutralized immediately, followed by dialysis against PBS.
克隆	多克隆
同种型	IgG

应用

Our [Abpromise guarantee](#) covers the use of **ab63158** in the following tested applications.

The application notes include recommended starting dilutions; optimal dilutions/concentrations should be determined by the end user.

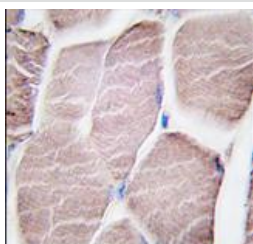
应用	Ab评论	说明
WB		1/100 - 1/500. Detects a band of approximately 97 kDa (predicted molecular weight: 97 kDa).
ELISA		1/1000.

应用	Ab评论	说明
IHC-P		1/10 - 1/50.

靶标

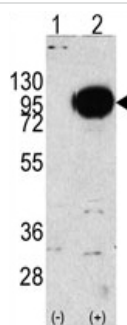
功能	Phosphorylase is an important allosteric enzyme in carbohydrate metabolism. Enzymes from different sources differ in their regulatory mechanisms and in their natural substrates. However, all known phosphorylases share catalytic and structural properties.
疾病相关	Defects in PYGM are the cause of glycogen storage disease type 5 (GSD5) [MIM:232600]; also known as McArdle disease. GSD5 is a metabolic disorder resulting in myopathy characterized by exercise intolerance, cramps, muscle weakness and recurrent myoglobinuria.
序列相似性	Belongs to the glycogen phosphorylase family.
翻译后修饰	Phosphorylation of Ser-15 converts phosphorylase B (unphosphorylated) to phosphorylase A.

图片



Immunohistochemistry (Formalin/PFA-fixed paraffin-embedded sections) - PYGM antibody (ab63158)

ab63158, at a 1/10 dilution, staining PYGM in formalin fixed, paraffin embedded human skeletal muscle tissue by Immunohistochemistry. ab63158 was peroxidase-conjugated to the secondary antibody, followed by DAB staining.



Western blot - PYGM antibody (ab63158)

All lanes : Anti-PYGM antibody (ab63158) at 1/100 dilution

Lane 1 : Non-transfected 293 cell lysates

Lane 2 : Lysates of 293 cells transiently transfected with PYGM gene.

Lysates/proteins at 2 µg per lane.

Predicted band size : 97 kDa

Observed band size : 97 kDa

Please note: All products are "FOR RESEARCH USE ONLY AND ARE NOT INTENDED FOR DIAGNOSTIC OR THERAPEUTIC USE"

Our Abpromise to you: Quality guaranteed and expert technical support

- Replacement or refund for products not performing as stated on the datasheet
- Valid for 12 months from date of delivery
- Response to your inquiry within 24 hours

- We provide support in Chinese, English, French, German, Japanese and Spanish
- Extensive multi-media technical resources to help you
- We investigate all quality concerns to ensure our products perform to the highest standards

If the product does not perform as described on this datasheet, we will offer a refund or replacement. For full details of the Abpromise, please visit <http://www.abcam.cn/abpromise> or contact our technical team.

Terms and conditions

- Guarantee only valid for products bought direct from Abcam or one of our authorized distributors