


## Product datasheet

# Anti-PTPLAD2 antibody ab82949

1 Abreviews 1 图像

### 概述

<b>产品名称</b>	Anti-PTPLAD2抗体
<b>描述</b>	兔多克隆抗体to PTPLAD2
<b>宿主</b>	Rabbit
<b>经测试应用</b>	<b>适用于:</b> WB
<b>种属反应性</b>	<b>与反应:</b> Human <b>预测可用于:</b> Mouse, Rat, Rabbit, Horse, Chicken, Guinea pig, Cow, Cat, Dog, Pig 
<b>免疫原</b>	Synthetic peptide corresponding to a region within internal sequence amino acids 72-121 (LLHIYVGIES NHLLPRFLQL TERIIILFVV ITSQEEVQEK YVVCVLFVFW) of human PTPLAD2 (NP_001010915). <a href="#">Run BLAST with ExPASy</a> <a href="#">Run BLAST with NCBI</a>
<b>阳性对照</b>	293T cell lysate

### 性能

<b>形式</b>	Liquid
<b>存放说明</b>	Shipped at 4°C. Upon delivery aliquot and store at -20°C. Avoid repeated freeze / thaw cycles.
<b>存储溶液</b>	Preservative: None Constituents: 2% Sucrose, PBS
<b>纯度</b>	Immunogen affinity purified
<b>纯化说明</b>	Purified by peptide affinity chromatography method.
<b>克隆</b>	多克隆
<b>同种型</b>	IgG

### 应用

Our [Abpromise guarantee](#) covers the use of **ab82949** in the following tested applications.

The application notes include recommended starting dilutions; optimal dilutions/concentrations should be determined by the end user.

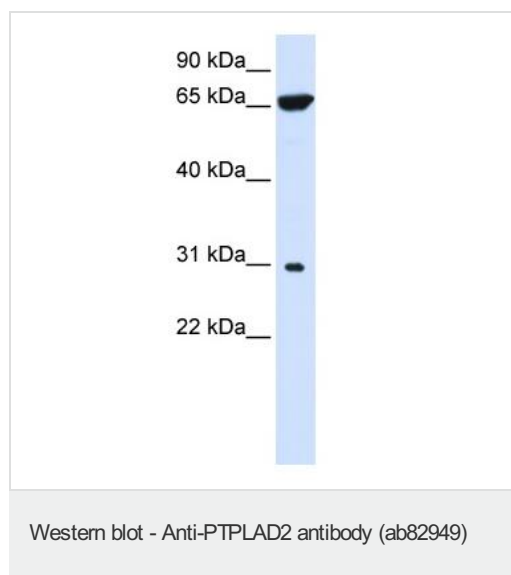
应用	Ab评论	说明
WB		Use a concentration of 1 µg/ml. Predicted molecular weight: 28 kDa. Good results were obtained when blocked with 5% non-fat dry milk in 0.05% PBS-T.

## 靶标

**相关性** PTPLAD2 is a protein that belongs to the PTPLA family. The function of PTPLAD2 remains unknown.

**细胞定位** Membrane; Multi pass membrane protein

## 图片



Anti-PTPLAD2 antibody (ab82949) at 1 µg/ml  
(in 5% skim milk / PBS) + 293T cell lysate at  
10 µg

### Secondary

HRP conjugated anti-Rabbit IgG at 1/50000  
dilution

**Predicted band size:** 28 kDa

**Observed band size:** 28 kDa

**Additional bands at:** 66 kDa. We are unsure  
as to the identity of these extra bands.

Gel Concentration: 12%

**Please note:** All products are "FOR RESEARCH USE ONLY AND ARE NOT INTENDED FOR DIAGNOSTIC OR THERAPEUTIC USE"

## Our Abpromise to you: Quality guaranteed and expert technical support

- Replacement or refund for products not performing as stated on the datasheet
- Valid for 12 months from date of delivery
- Response to your inquiry within 24 hours
- We provide support in Chinese, English, French, German, Japanese and Spanish
- Extensive multi-media technical resources to help you
- We investigate all quality concerns to ensure our products perform to the highest standards

If the product does not perform as described on this datasheet, we will offer a refund or replacement. For full details of the Abpromise,

please visit <http://www.abcam.cn/abpromise> or contact our technical team.

## Terms and conditions

---

- Guarantee only valid for products bought direct from Abcam or one of our authorized distributors