

## Product datasheet

# Anti-PSME3 antibody - C-terminal ab91542

### 1 图像

#### 概述

产品名称	Anti-PSME3抗体- C-terminal
描述	兔多克隆抗体to PSME3 - C-terminal
宿主	Rabbit
经测试应用	适用于: WB, ELISA
种属反应性	与反应: Human
免疫原	Synthetic peptide selected from the C-terminal region of Human PSME3 conjugated to KLH (NP_005780).
阳性对照	Ramos cell line lysates

#### 性能

形式	Liquid
存放说明	Shipped at 4°C. Upon delivery aliquot and store at -20°C. Avoid repeated freeze / thaw cycles.
存储溶液	Preservative: 0.09% Sodium Azide Constituents: PBS
纯度	Immunogen affinity purified
纯化说明	ab91542 is purified through a protein A column, followed by peptide affinity purification.
克隆	多克隆
同种型	IgG

#### 应用

Our [Abpromise guarantee](#) covers the use of **ab91542** in the following tested applications.

The application notes include recommended starting dilutions; optimal dilutions/concentrations should be determined by the end user.

应用	Ab评论	说明
WB		
ELISA		

## 应用说明

ELISA: 1/1000.

WB: 1/100 - 1/500. Predicted molecular weight: 30 kDa.

Not yet tested in other applications.

Optimal dilutions/concentrations should be determined by the end user.

## 靶标

### 功能

Subunit of the 11S REG-gamma (also called PA28-gamma) proteasome regulator, a donut-shaped homoheptamer which associates with the proteasome. 11S REG-gamma activates the trypsin-like catalytic subunit of the proteasome but inhibits the chymotrypsin-like and postglutamyl-preferring (PGPH) subunits. Facilitates the MDM2-p53/TP53 interaction which promotes ubiquitination- and MDM2-dependent proteasomal degradation of p53/TP53, limiting its accumulation and resulting in inhibited apoptosis after DNA damage. May also be involved in cell cycle regulation.

### 序列相似性

Belongs to the PA28 family.

### 结构域

The C-terminal sequences affect heptamer stability and proteasome affinity.

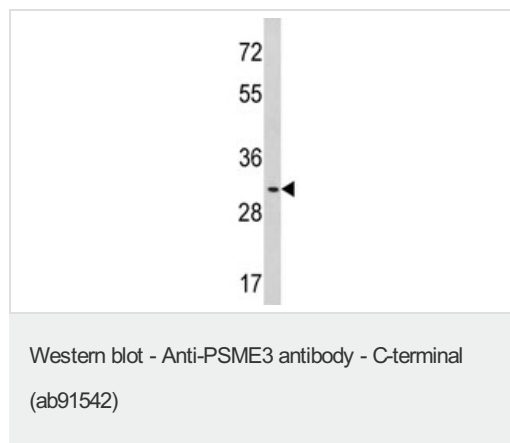
### 翻译后修饰

Phosphorylated by MAP3K3.

### 细胞定位

Nucleus. Cytoplasm. Localizes to the cytoplasm during mitosis following nuclear envelope breakdown at this distinct stage of the cell cycle which allows its interaction with MAP3K3 kinase.

## 图片



Anti-PSME3 antibody - C-terminal (ab91542)  
at 1/100 dilution + Ramos cell line lysates at  
35  $\mu$ g

**Predicted band size: 30 kDa**

**Please note:** All products are "FOR RESEARCH USE ONLY AND ARE NOT INTENDED FOR DIAGNOSTIC OR THERAPEUTIC USE"

## Our Abpromise to you: Quality guaranteed and expert technical support

- Replacement or refund for products not performing as stated on the datasheet
- Valid for 12 months from date of delivery
- Response to your inquiry within 24 hours
- We provide support in Chinese, English, French, German, Japanese and Spanish

- Extensive multi-media technical resources to help you
- We investigate all quality concerns to ensure our products perform to the highest standards

If the product does not perform as described on this datasheet, we will offer a refund or replacement. For full details of the Abpromise, please visit <http://www.abcam.cn/abpromise> or contact our technical team.

### **Terms and conditions**

---

- Guarantee only valid for products bought direct from Abcam or one of our authorized distributors