


Product datasheet

Anti-PSMC3 antibody ab125164

2 图像

概述

产品名称	Anti-PSMC3抗体
描述	兔多克隆抗体to PSMC3
经测试应用	适用于: WB, IP
种属反应性	与反应: Mouse, Human 预测可用于: Rat, Rabbit, Horse, Chicken, Guinea pig, Cow, Dog, Turkey, Pig, Xenopus laevis, Chimpanzee, Zebrafish, Rhesus monkey, Gorilla, Orangutan, Xenopus tropicalis 
免疫原	Synthetic peptide, corresponding to a region within amino acids 389-439 of Human PSMC3 (NP_002795.2).
阳性对照	293T, NIH 3T3, Jurkat and HeLa whole cell lysates

性能

形式	Liquid
存放说明	Shipped at 4°C. Upon delivery aliquot and store at -20°C. Avoid freeze / thaw cycles.
存储溶液	Preservative: 0.09% Sodium azide Constituent: 99% Tris citrate/phosphate Note: pH 7 to 8
纯度	Immunogen affinity purified
克隆	多克隆
同种型	IgG

应用

Our [Abpromise guarantee](#) covers the use of **ab125164** in the following tested applications.

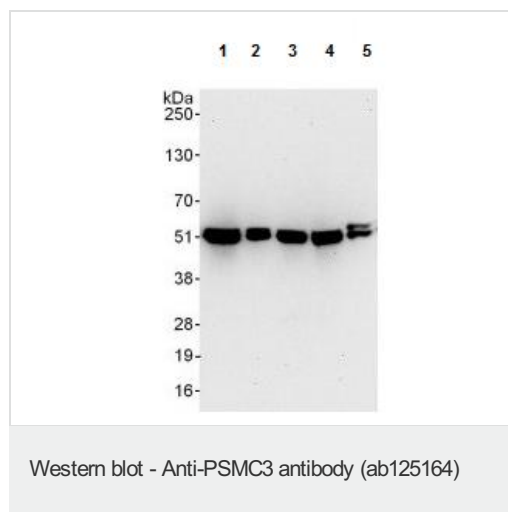
The application notes include recommended starting dilutions; optimal dilutions/concentrations should be determined by the end user.

应用	Ab评论	说明
WB		1/2000 - 1/10000. Predicted molecular weight: 49 kDa.
IP		Use at 2-10 µg/mg of lysate.

靶标

功能	The 26S protease is involved in the ATP-dependent degradation of ubiquitinated proteins. The regulatory (or ATPase) complex confers ATP dependency and substrate specificity to the 26S complex (By similarity). In case of HIV-1 infection, suppresses Tat-mediated transactivation.
序列相似性	Belongs to the AAA ATPase family.
翻译后修饰	Sumoylated by UBE2I in response to MEKK1-mediated stimuli.
细胞定位	Cytoplasm. Nucleus.

图片



All lanes : Anti-PSMC3 antibody (ab125164)
at 0.1 µg/ml

Lane 1 : 293T whole cell lysate at 50 µg

Lane 2 : 293T whole cell lysate at 15 µg

Lane 3 : Jurkat whole cell lysate at 50 µg

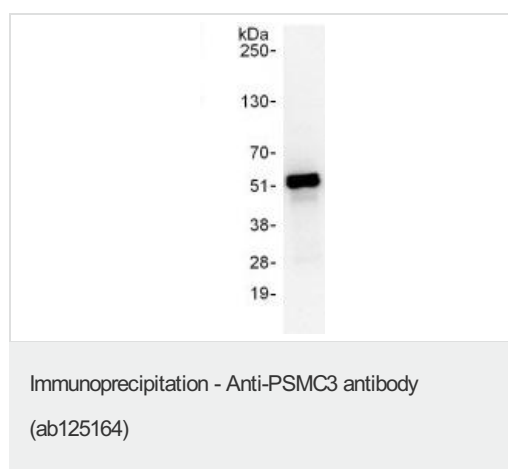
Lane 4 : HeLa whole cell lysate at 50 µg

Lane 5 : NIH3T3 whole cell lysate at 50 µg

Developed using the ECL technique

Predicted band size : 49 kDa

Exposure time : 30 seconds



ab125164, at 6 µg/mg lysate, staining PSMC3
in 293T cell lysate (1 mg of
immunoprecipitate, 20% loaded in the lane).
For the subsequent Western blot, ab125164
was used at 1 µg/ml, and the blot developed
using the ECL technique, with an exposure
time of 10 seconds.

Please note: All products are "FOR RESEARCH USE ONLY AND ARE NOT INTENDED FOR DIAGNOSTIC OR THERAPEUTIC USE"

-
- Replacement or refund for products not performing as stated on the datasheet
 - Valid for 12 months from date of delivery
 - Response to your inquiry within 24 hours

 - We provide support in Chinese, English, French, German, Japanese and Spanish
 - Extensive multi-media technical resources to help you
 - We investigate all quality concerns to ensure our products perform to the highest standards

If the product does not perform as described on this datasheet, we will offer a refund or replacement. For full details of the Abpromise, please visit <http://www.abcam.cn/abpromise> or contact our technical team.

Terms and conditions

- Guarantee only valid for products bought direct from Abcam or one of our authorized distributors