

## Product datasheet

# Anti-PRDM16 antibody ab106410

★★★★☆ 6 Abreviews 8 References 7 图像

### 概述

产品名称	Anti-PRDM16抗体
描述	兔多克隆抗体to PRDM16
特异性	At least four isoforms of PRDM16 are known to exist; ab106410 will recognize all four.
经测试应用	适用于: ICC/IF, IHC-P, WB
种属反应性	与反应: Mouse, Rat, Human
免疫原	A 17 amino acid peptide from near the carboxy terminus of Human PRDM16 (CAH71530).
阳性对照	WB: K562 cell lysate; Rat brain tissue lysate; Mouse MEL cell lysate. IHC-P: Human and rat brain tissue. ICC/IF: Human brown adipocytes from supraclavicular fat tissue; Human brain cells.

### 性能

形式	Liquid
存放说明	Shipped at 4°C. Store at 4°C (stable for up to 12 months).
存储溶液	Preservative: 0.02% Sodium Azide Constituents: PBS
纯度	Immunogen affinity purified
克隆	多克隆
同种型	IgG

### 应用

Our [Abpromise guarantee](#) covers the use of **ab106410** in the following tested applications.

The application notes include recommended starting dilutions; optimal dilutions/concentrations should be determined by the end user.

应用	Ab评论	说明
ICC/IF	★★★★★	Use a concentration of 20 µg/ml.
IHC-P	★★★★☆	Use a concentration of 2.5 µg/ml.
WB	★★★★☆	Use a concentration of 1 - 2 µg/ml. Predicted molecular weight: 140 kDa.

## 靶标

---

### 功能

Binds DNA and functions as a transcriptional regulator. Functions in the differentiation of brown adipose tissue (BAT) which is specialized in dissipating chemical energy in the form of heat in response to cold or excess feeding while white adipose tissue (WAT) is specialized in the storage of excess energy and the control of systemic metabolism. Together with CEBPB, regulates the differentiation of myoblastic precursors into brown adipose cells. Functions also as a repressor of TGF-beta signaling. Isoform 4 may regulate granulocytes differentiation.

### 组织特异性

Expressed in uterus and kidney.

### 疾病相关

Note=A chromosomal aberration involving PRDM16 is found in myelodysplastic syndrome (MDS) and acute myeloid leukemia (AML). Reciprocal translocation t(1;3)(p36;q21). Isoform 4 is specifically expressed in adult T-cell leukemia.

### 序列相似性

Contains 10 C2H2-type zinc fingers.  
Contains 1 SET domain.

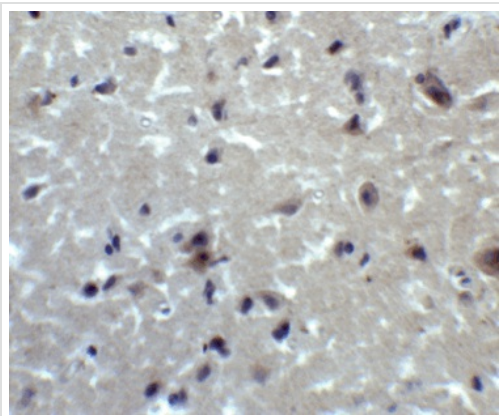
### 细胞定位

Nucleus.

---

## 图片

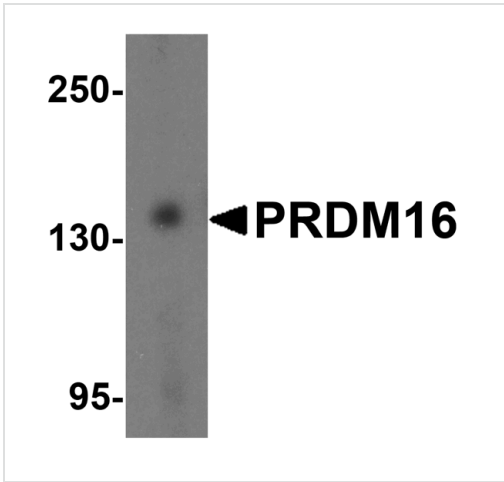
---



Paraffin-embedded human brain tissue stained for PRDM16 using ab106410 at 2 µg/ml in immunohistochemical analysis.

Immunohistochemistry (Formalin/PFA-fixed paraffin-embedded sections) - Anti-PRDM16 antibody (ab106410)

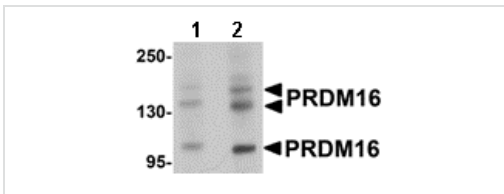
---



Western blot - Anti-PRDM16 antibody (ab106410)

Anti-PRDM16 antibody (ab106410) at 1 µg/ml  
 + K562 (human chronic myelogenous  
 leukemia cell line from bone marrow) cell  
 lysate

**Predicted band size :** 140 kDa



Western blot - Anti-PRDM16 antibody (ab106410)

**Lane 1 :** Anti-PRDM16 antibody (ab106410)  
 at 1 µg/ml

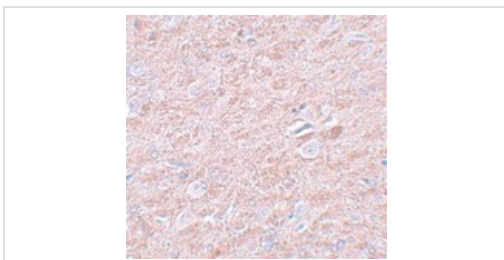
**Lane 2 :** Anti-PRDM16 antibody (ab106410)  
 at 2 µg/ml

**Lane 1 :** Rat brain tissue lysate

**Lane 2 :** Rat brain tissue lysate

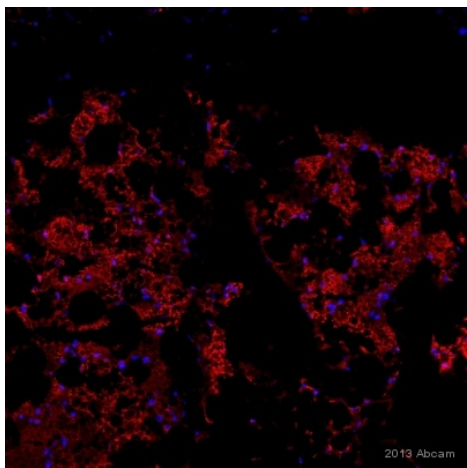
Lysates/proteins at 15 µg per lane.

**Predicted band size :** 140 kDa



Immunohistochemistry (Formalin/PFA-fixed paraffin-  
 embedded sections) - Anti-PRDM16 antibody  
 (ab106410)

ab106410 at 2.5 µg/ml, staining PRDM16 in  
 paraffin embedded rat brain tissue.



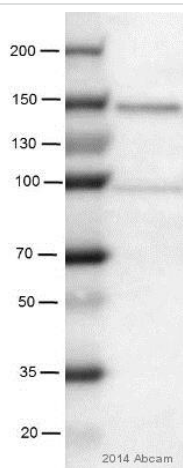
Immunocytochemistry/ Immunofluorescence - Anti-PRDM16 antibody (ab106410)

Image is courtesy of an Abreview submitted by Lena Appelsved

ab106410 staining RAP1 in Human Brown adipocytes from supraclavicular fat tissue by ICC/IF

(Immunocytochemistry/immunofluorescence).

Cells were fixed with paraformaldehyde, permeabilized with 0.3% Triton X-100 and blocked with 10% serum, 1% BSA for 1 hour at 22°C. Samples were incubated with primary antibody (2 ug/ml in 10% serum, 1% BSA, 0.3% Triton X100, PBS) for 16 hours at 4°C. A Cy3®-conjugated Donkey F(ab')<sub>2</sub> anti-rabbit IgG polyclonal (1/500) was used as the secondary antibody.



Western blot - Anti-PRDM16 antibody (ab106410)

Image courtesy of an anonymous Abreview

Anti-PRDM16 antibody (ab106410) at 1/2500 dilution (12 hours at 4°C, 1% skim milk) + Mouse MEL whole cell lysate at 17 µg with Milk, 1 hour at 25°C at 5 %

### Secondary

HRP anti-rabbit IgG

Developed using the ECL technique

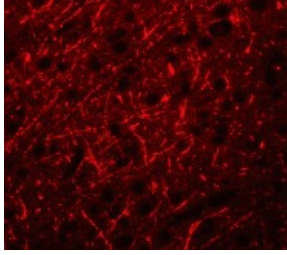
Performed under reducing conditions.

**Predicted band size** : 140 kDa

**Additional bands at** : 140 kDa. We are unsure as to the identity of these extra bands.

**Exposure time** : 2 minutes

*Image courtesy of an anonymous Abreview*



Immunofluorescence of PRDM16 in Human  
Brain cells using ab106410 at 20 ug/ml.

Immunocytochemistry/ Immunofluorescence - Anti-  
PRDM16 antibody (ab106410)

**Please note:** All products are "FOR RESEARCH USE ONLY AND ARE NOT INTENDED FOR DIAGNOSTIC OR THERAPEUTIC USE"

### **Our Abpromise to you: Quality guaranteed and expert technical support**

- Replacement or refund for products not performing as stated on the datasheet
- Valid for 12 months from date of delivery
- Response to your inquiry within 24 hours
- We provide support in Chinese, English, French, German, Japanese and Spanish
- Extensive multi-media technical resources to help you
- We investigate all quality concerns to ensure our products perform to the highest standards

If the product does not perform as described on this datasheet, we will offer a refund or replacement. For full details of the Abpromise, please visit <http://www.abcam.cn/abpromise> or contact our technical team.

### **Terms and conditions**

- Guarantee only valid for products bought direct from Abcam or one of our authorized distributors