

Product datasheet

Anti-PPP6C antibody ab60249

2 图像

概述

产品名称	Anti-PPP6C抗体
描述	兔多克隆抗体to PPP6C
宿主	Rabbit
经测试应用	适用于: ELISA, WB, IHC-P
种属反应性	与反应: Human
免疫原	KLH conjugated synthetic peptide selected from the N-terminal region of human PPP6C.
阳性对照	Thymus cell lysate or human breast carcinoma tissue.

性能

形式	Liquid
存放说明	Shipped at 4°C. Store at +4°C short term (1-2 weeks). Upon delivery aliquot. Store at -20°C or -80°C. Avoid freeze / thaw cycle.
存储溶液	Preservative: 0.09% Sodium Azide Constituents: PBS
纯度	Protein G purified
纯化说明	This antibody is purified through a protein G column, eluted with high and low pH buffers and neutralized immediately, followed by dialysis against PBS.
克隆	多克隆
同种型	IgG

应用

Our [Abpromise guarantee](#) covers the use of **ab60249** in the following tested applications.

The application notes include recommended starting dilutions; optimal dilutions/concentrations should be determined by the end user.

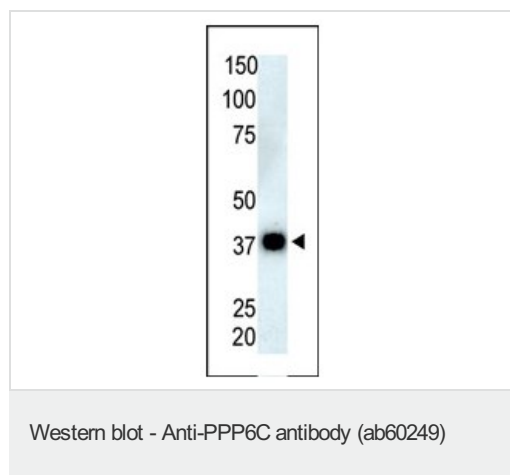
应用	Ab评论	说明
ELISA		1/1000.
WB		1/100 - 1/500. Detects a band of approximately 37 kDa (predicted molecular weight: 35 kDa).

应用	Ab评论	说明
IHC-P		1/50 - 1/100.

靶标

功能	Catalytic subunit of protein phosphatase 6 (PP6). PP6 is a component of a signaling pathway regulating cell cycle progression in response to IL2 receptor stimulation. N-terminal domain restricts G1 to S phase progression in cancer cells, in part through control of cyclin D1. Downregulates MAP3K7 kinase activation of the IL1 signaling pathway by dephosphorylation of MAP3K7.
组织特异性	Ubiquitously expressed in all tissues tested with highest expression levels in testis, heart, kidney, brain, stomach, liver and skeletal muscle and lowest in placenta, lung colon and spleen.
序列相似性	Belongs to the PPP phosphatase family. PP-6 (PP-V) subfamily.
细胞定位	Cytoplasm.

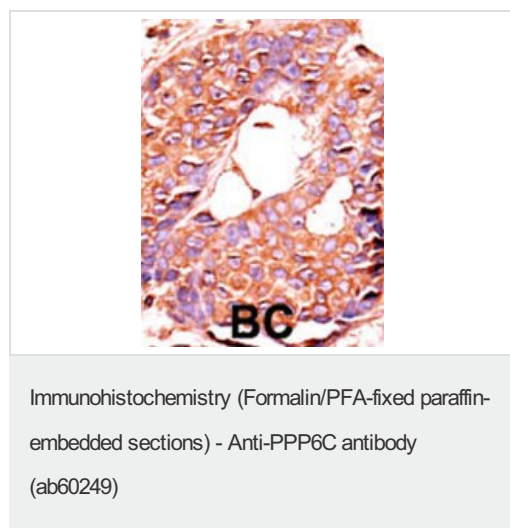
图片



Anti-PPP6C antibody (ab60249) at 1/100 dilution + Thymus cell lysate

Predicted band size: 35 kDa

Observed band size: 37 kDa



Ab60249 (1/50-1/100) staining human PPP6C in human breast carcinoma tissue by immunohistochemistry using formalin fixed, paraffin embedded tissue.

Formalin-fixed and paraffin-embedded human cancer tissue reacted with the primary antibody, which was peroxidase-conjugated to the secondary antibody, followed by AEC staining.

BC = breast carcinoma

Our Abpromise to you: Quality guaranteed and expert technical support

- Replacement or refund for products not performing as stated on the datasheet
- Valid for 12 months from date of delivery
- Response to your inquiry within 24 hours

- We provide support in Chinese, English, French, German, Japanese and Spanish
- Extensive multi-media technical resources to help you
- We investigate all quality concerns to ensure our products perform to the highest standards

If the product does not perform as described on this datasheet, we will offer a refund or replacement. For full details of the Abpromise, please visit <http://www.abcam.cn/abpromise> or contact our technical team.

Terms and conditions

- Guarantee only valid for products bought direct from Abcam or one of our authorized distributors