

Product datasheet

Anti-PPP4C antibody - N-terminal ab71324

2 图像

概述

产品名称	Anti-PPP4C抗体- N-terminal
描述	兔多克隆抗体to PPP4C - N-terminal
经测试应用	适用于: WB, ELISA, IHC-P
种属反应性	与反应: Human
免疫原	Synthetic peptide from the N-terminal region of Human PPP4C, conjugated to KLH
阳性对照	HeLa cell lysate; human breast carcinoma tissue.

性能

形式	Liquid
存放说明	Shipped at 4°C. Upon delivery aliquot and store at -20°C. Avoid freeze / thaw cycles.
存储溶液	Preservative: 0.09% Sodium Azide Constituents: PBS
纯度	Ammonium Sulphate Precipitation
克隆	多克隆
同种型	IgG

应用

Our [Abpromise guarantee](#) covers the use of **ab71324** in the following tested applications.

The application notes include recommended starting dilutions; optimal dilutions/concentrations should be determined by the end user.

应用	Ab评论	说明
WB		1/100 - 1/500. Detects a band of approximately 34 kDa (predicted molecular weight: 34 kDa).
ELISA		1/1000.
IHC-P		1/50 - 1/100.

功能

Protein phosphatase that is involved in many processes such as microtubule organization at centrosomes, maturation of spliceosomal snRNPs, apoptosis, DNA repair, tumor necrosis factor (TNF)-alpha signaling, activation of c-Jun N-terminal kinase MAPK8, regulation of histone acetylation, DNA damage checkpoint signaling, NF-kappa-B activation and cell migration. The PPP4C-PPP4R1 PP4 complex may play a role in dephosphorylation and regulation of HDAC3. The PPP4C-PPP4R2-PPP4R3A PP4 complex specifically dephosphorylates H2AFX phosphorylated on Ser-140 (gamma-H2AFX) generated during DNA replication and required for DNA double strand break repair. Dephosphorylates NDEL1 at CDK1 phosphorylation sites and negatively regulates CDK1 activity in interphase (By similarity). In response to DNA damage, catalyzes RPA2 dephosphorylation, an essential step for DNA repair since it allows the efficient RPA2-mediated recruitment of RAD51 to chromatin.

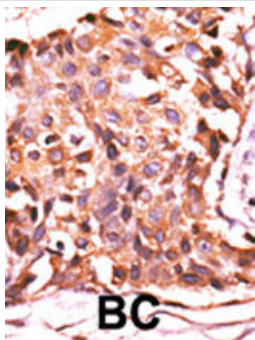
序列相似性

Belongs to the PPP phosphatase family. PP-4 (PP-X) subfamily.

细胞定位

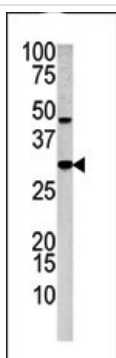
Cytoplasm. Nucleus. Cytoplasm > cytoskeleton > centrosome.

图片



Analysis of human breast carcinoma tissue with 1:50 ab71324. DAB staining.

Immunohistochemistry (Formalin/PFA-fixed paraffin-embedded sections) - PPP4C antibody (ab71324)



Anti-PPP4C antibody - N-terminal (ab71324) at 1/100 dilution + HeLa cell lysate at 12.5 µg

Predicted band size : 34 kDa

Observed band size : 34 kDa

Additional bands at : 48 kDa. We are unsure as to the identity of these extra bands.

Western blot - PPP4C antibody (ab71324)

Please note: All products are "FOR RESEARCH USE ONLY AND ARE NOT INTENDED FOR DIAGNOSTIC OR THERAPEUTIC USE"

Our Abpromise to you: Quality guaranteed and expert technical support

- Replacement or refund for products not performing as stated on the datasheet
- Valid for 12 months from date of delivery
- Response to your inquiry within 24 hours

- We provide support in Chinese, English, French, German, Japanese and Spanish
- Extensive multi-media technical resources to help you
- We investigate all quality concerns to ensure our products perform to the highest standards

If the product does not perform as described on this datasheet, we will offer a refund or replacement. For full details of the Abpromise, please visit <http://www.abcam.cn/abpromise> or contact our technical team.

Terms and conditions

- Guarantee only valid for products bought direct from Abcam or one of our authorized distributors