

Product datasheet

Anti-PLEKHM2 antibody ab91581

2 图像

概述

产品名称	Anti-PLEKHM2抗体
描述	兔多克隆抗体to PLEKHM2
特异性	ab91581 is specific for PLEKHM2 and will not recognize the other PLEKHM proteins.
经测试应用	适用于: ICC/IF, WB, ELISA
种属反应性	与反应: Mouse, Rat, Human
免疫原	A 17 amino acid synthetic peptide from near the carboxy terminus of Human PLEKHM2 (CAH72018).
阳性对照	Rat brain tissue lysate

性能

形式	Liquid
存放说明	Shipped at 4°C. Store at +4°C.
存储溶液	Preservative: 0.02% Sodium Azide Constituents: PBS
纯度	Immunogen affinity purified
克隆	多克隆
同种型	IgG

应用

Our [Abpromise guarantee](#) covers the use of **ab91581** in the following tested applications.

The application notes include recommended starting dilutions; optimal dilutions/concentrations should be determined by the end user.

应用	Ab评论	说明
ICC/IF		
WB		
ELISA		

## 应用说明

ELISA: Use at an assay dependent dilution.

WB: Use at a concentration of 0.5 - 1 µg/ml. Predicted molecular weight: 169 kDa.

Not yet tested in other applications.

Optimal dilutions/concentrations should be determined by the end user.

## 靶标

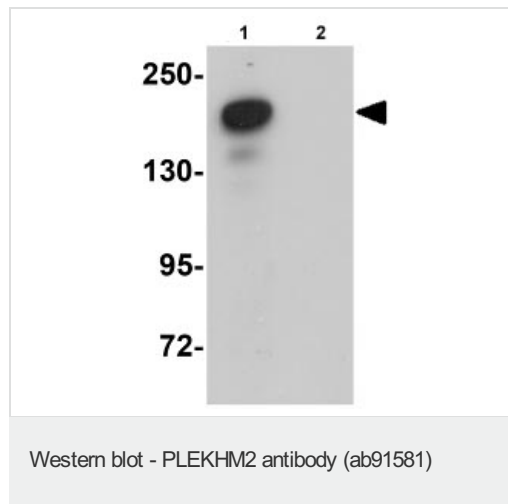
### 相关性

PLEKHM2, also known as SKIP, is a member of the M family of Pleckstrin homology domain-containing proteins. While little is known of PLEKHM2, a recent study examining differential gene expression in human hematopoietic stem cells has shown it to be specifically expressed in stem cells, suggesting that PLEKHM2 may play a role in erythroid commitment and development. Other studies have shown that PLEKHM2 is required for interaction with the Salmonella virulence factor SifA for Salmonella pathogenesis, suggesting that PLEKHM2 has cellular roles other than in the developing embryo.

### 细胞定位

Cytoplasmic

## 图片



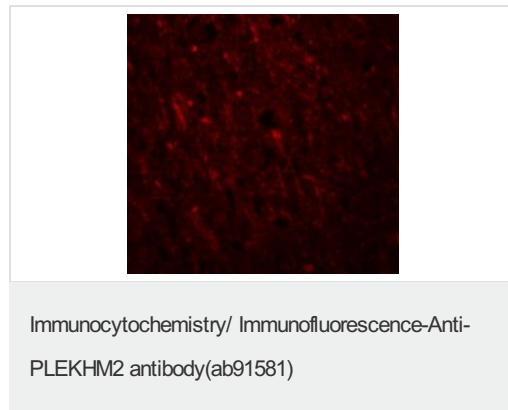
**All lanes** : Anti-PLEKHM2 antibody (ab91581) at 0.5 µg/ml

**Lane 1** : Rat brain tissue lysate

**Lane 2** : Rat brain tissue lysate with blocking peptide

Lysates/proteins at 15 µg per lane.

**Predicted band size** : 169 kDa



Immunofluorescence of PLEKHM2 in Human Brain cells using ab91581 at 20 µg/ml.

**Please note:** All products are "FOR RESEARCH USE ONLY AND ARE NOT INTENDED FOR DIAGNOSTIC OR THERAPEUTIC USE"

## **Our Abpromise to you: Quality guaranteed and expert technical support**

---

- Replacement or refund for products not performing as stated on the datasheet
- Valid for 12 months from date of delivery
- Response to your inquiry within 24 hours
  
- We provide support in Chinese, English, French, German, Japanese and Spanish
- Extensive multi-media technical resources to help you
- We investigate all quality concerns to ensure our products perform to the highest standards

If the product does not perform as described on this datasheet, we will offer a refund or replacement. For full details of the Abpromise, please visit <http://www.abcam.cn/abpromise> or contact our technical team.

## **Terms and conditions**

---

- Guarantee only valid for products bought direct from Abcam or one of our authorized distributors