


Product datasheet

Anti-PKLR antibody ab96604

2 图像

概述

| | |
|-------|--|
| 产品名称 | Anti-PKLR抗体 |
| 描述 | 兔多克隆抗体to PKLR |
| 宿主 | Rabbit |
| 经测试应用 | 适用于: WB, ICC/IF |
| 种属反应性 | 与反应: Human 预测可用于: Mouse, Rat, Cow  |
| 免疫原 | Recombinant fragment, corresponding to a region within the N terminal amino acids 1-230 of Human PKLR. |
| 阳性对照 | 293T, A431, H1299, HeLa, HepG2, Raji cell lysates |

性能

| | |
|------|---|
| 形式 | Liquid |
| 存放说明 | Shipped at 4°C. Upon delivery aliquot and store at -20°C or -80°C. Avoid repeated freeze / thaw cycles. |
| 存储溶液 | Preservative: 0.01% Thimerosal (merthiolate) Constituents: 10% Glycerol, 0.1M Tris, 0.1M Glycine, pH 7.0 |
| 纯度 | Immunogen affinity purified |
| 克隆 | 多克隆 |
| 同种型 | IgG |

应用

Our [Abpromise guarantee](#) covers the use of **ab96604** in the following tested applications.

The application notes include recommended starting dilutions; optimal dilutions/concentrations should be determined by the end user.

| 应用 | Ab评论 | 说明 |
|--------|------|---|
| WB | | 1/500 - 1/3000. Predicted molecular weight: 62 kDa. |
| ICC/IF | | 1/100 - 1/200. |

靶标

功能

Plays a key role in glycolysis.

通路

Carbohydrate degradation; glycolysis; pyruvate from D-glyceraldehyde 3-phosphate: step 5/5.

疾病相关

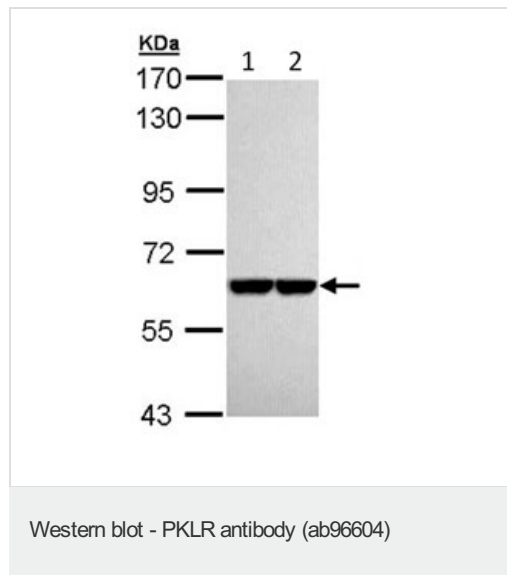
Defects in PKLR are the cause of pyruvate kinase hyperactivity (PKHYP) [MIM:102900]; also known as high red cell ATP syndrome. This autosomal dominant phenotype is characterized by increase of red blood cell ATP.

Defects in PKLR are the cause of pyruvate kinase deficiency of red cells (PKRD) [MIM:266200]. A frequent cause of hereditary non-spherocytic hemolytic anemia. Clinically, pyruvate kinase-deficient patients suffer from a highly variable degree of chronic hemolysis, ranging from severe neonatal jaundice and fatal anemia at birth, severe transfusion-dependent chronic hemolysis, moderate hemolysis with exacerbation during infection, to a fully compensated hemolysis without apparent anemia.

序列相似性

Belongs to the pyruvate kinase family.

图片



All lanes : Anti-PKLR antibody (ab96604) at 1/5000 dilution

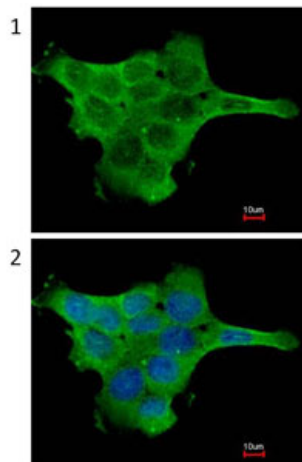
Lane 1 : H1299 whole cell lysate

Lane 2 : HeLa whole cell lysate

Lysates/proteins at 30 µg per lane.

Predicted band size: 62 kDa

7.5% SDS PAGE



Immunofluorescence analysis of paraformaldehyde-fixed A431, using ab96604 at 1:200 dilution. Image 2: Merged with DNA probe.

Immunocytochemistry/ Immunofluorescence - PKLR antibody (ab96604)

Please note: All products are "FOR RESEARCH USE ONLY AND ARE NOT INTENDED FOR DIAGNOSTIC OR THERAPEUTIC USE"

Our Abpromise to you: Quality guaranteed and expert technical support

- Replacement or refund for products not performing as stated on the datasheet
- Valid for 12 months from date of delivery
- Response to your inquiry within 24 hours
- We provide support in Chinese, English, French, German, Japanese and Spanish
- Extensive multi-media technical resources to help you
- We investigate all quality concerns to ensure our products perform to the highest standards

If the product does not perform as described on this datasheet, we will offer a refund or replacement. For full details of the Abpromise, please visit <http://www.abcam.cn/abpromise> or contact our technical team.

Terms and conditions

- Guarantee only valid for products bought direct from Abcam or one of our authorized distributors