

Product datasheet

Anti-PKC alpha antibody ab4124

7 References 2 图像

概述

产品名称	Anti-PKC alpha抗体
描述	兔多克隆抗体to PKC alpha
宿主	Rabbit
经测试应用	适用于: WB
种属反应性	与反应: Mouse, Rat, Cow, Human
免疫原	Synthetic peptide: SYVNPQFVHPILQSAV , corresponding to amino acids 657-672 of Rat PKC alpha. Run BLAST with Run BLAST with
阳性对照	ICC/IF: MCF7 cells.

性能

形式	Liquid
存放说明	Shipped at 4°C. Store at +4°C short term (1-2 weeks). Upon delivery aliquot. Store at -20°C or -80°C. Avoid freeze / thaw cycle.
存储溶液	Preservative: 0.05% Sodium Azide
纯度	Whole antiserum
克隆	多克隆
同种型	IgG

应用

Our [Abpromise guarantee](#) covers the use of **ab4124** in the following tested applications.

The application notes include recommended starting dilutions; optimal dilutions/concentrations should be determined by the end user.

应用	Ab 评论	说明

应用	Ab 评论	说明
----	----------	----

WB 1/250. Predicted molecular weight: 80 kDa. (AP/HRP). With a more sensitive detection system, such as enhanced chemiluminescence or ELISA, the antibody may be diluted further.

靶标

功能

This is a calcium-activated, phospholipid-dependent, serine- and threonine-specific enzyme. May play a role in cell motility by phosphorylating CSPG4. PKC is activated by diacylglycerol which in turn phosphorylates a range of cellular proteins. PKC also serves as the receptor for phorbol esters, a class of tumor promoters.

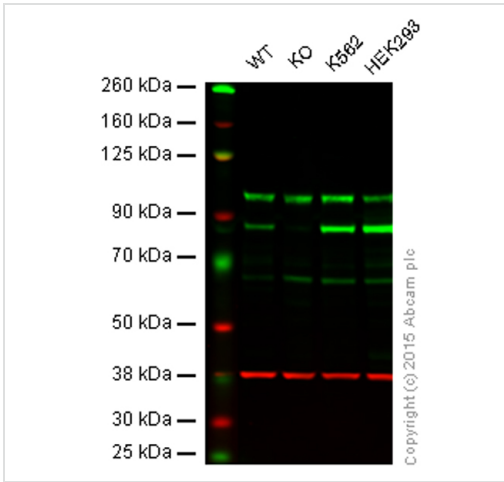
序列相似性

Belongs to the protein kinase superfamily. AGC Ser/Thr protein kinase family. PKC subfamily. Contains 1 AGC-kinase C-terminal domain. Contains 1 C2 domain. Contains 2 phorbol-ester/DAG-type zinc fingers. Contains 1 protein kinase domain.

细胞定位

Cytoplasm. Cell membrane. Nucleus.

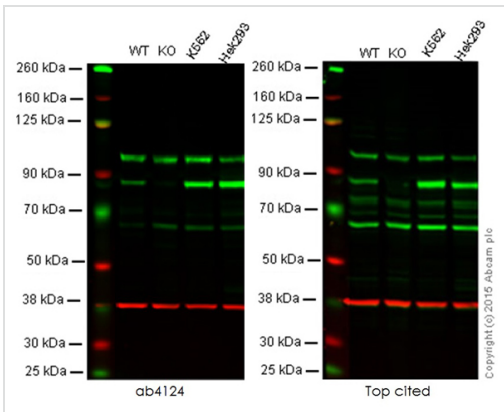
图片



Western blot - Anti-PKC alpha antibody (ab4124)

Lane 1: Wild-type HAP1 cell lysate (20 µg)
Lane 2: PKC alpha knockout HAP1 cell lysate (20 µg)
Lane 3: K562 cell lysate (20 µg)
Lane 4: HEK293 cell lysate (20 µg)
Lanes 1 - 4: Merged signal (red and green).
 Green - ab4124 observed at 85 kDa. Red - loading control, [ab8245](#), observed at 37 kDa.

ab4124 was shown to recognize PKC alpha in wild-type HAP1 cells along with additional cross-reactive bands. No band was observed when PKC alpha knockout samples were examined. Wild-type and PKC alpha knockout samples were subjected to SDS-PAGE. ab4124 and [ab8245](#) (loading control to GAPDH) were diluted to 1/250 and 1/2000 respectively and incubated overnight at 4°C. Blots were developed with Goat anti-Rabbit IgG H&L (IRDye® 800CW) preadsorbed ([ab216773](#)) and Goat anti-Mouse IgG H&L (IRDye® 680RD) preadsorbed ([ab216776](#)) secondary antibodies at 1/10,000 dilution for 1 hour at room temperature before imaging.



Western blot - Anti-PKC alpha antibody (ab4124)

Lane 1: Wild-type HAP1 cell lysate (20 µg)
Lane 2: PKC alpha knockout HAP1 cell lysate (20 µg)
Lane 3: K562 cell lysate (20 µg)
Lane 4: HEK293 cell lysate (20 µg)
Lanes 1 - 4: Merged signal (red and green).
 Green - ab4124 observed at 77 kDa. Red - loading control, [ab8245](#), observed at 37 kDa.

This western blot image is a comparison between ab4124 and a competitor's top cited rabbit polyclonal antibody.

Please note: All products are "FOR RESEARCH USE ONLY AND ARE NOT INTENDED FOR DIAGNOSTIC OR THERAPEUTIC USE"

Our Abpromise to you: Quality guaranteed and expert technical support

- Replacement or refund for products not performing as stated on the datasheet
- Valid for 12 months from date of delivery
- Response to your inquiry within 24 hours

- We provide support in Chinese, English, French, German, Japanese and Spanish
- Extensive multi-media technical resources to help you
- We investigate all quality concerns to ensure our products perform to the highest standards

If the product does not perform as described on this datasheet, we will offer a refund or replacement. For full details of the Abpromise, please visit <http://www.abcam.cn/abpromise> or contact our technical team.

Terms and conditions

- Guarantee only valid for products bought direct from Abcam or one of our authorized distributors