

Product datasheet

Anti-PI 3 Kinase catalytic subunit alpha antibody ab87530

1 图像

概述

产品名称	Anti-PI 3 Kinase catalytic subunit alpha抗体
描述	山羊多克隆抗体to PI 3 Kinase catalytic subunit alpha
宿主	Goat
经测试应用	适用于: ELISA, IHC-P
种属反应性	与反应: Human 预测可用于: Mouse, Rat, Chicken, Cow, Dog, Xenopus laevis
免疫原	Synthetic peptide: C-HQWLKDKNKGEIYD corresponding to internal amino acids 878 - 891 of Human PI 3 Kinase catalytic subunit alpha (NP_006209.2), with a cysteine residue linker Run BLAST with Run BLAST with
阳性对照	Human cerebral cortex

性能

形式	Liquid
存放说明	Shipped at 4°C. Upon delivery aliquot and store at -20°C or -80°C. Avoid repeated freeze / thaw cycles.
存储溶液	Preservative: 0.02% Sodium Azide Constituents: 0.5% BSA, Tris buffered saline, pH 7.3
纯度	Protein G purified
克隆	多克隆
同种型	IgG

应用

Our [Abpromise guarantee](#) covers the use of **ab87530** in the following tested applications.

The application notes include recommended starting dilutions; optimal dilutions/concentrations should be determined by the end user.

应用	Ab评论	说明
ELISA		1/128000.
IHC-P		Use at an assay dependent concentration.

靶标

功能

Phosphorylates PtdIns, PtdIns4P and PtdIns(4,5)P2 with a preference for PtdIns(4,5)P2.

疾病相关

Defects in PIK3CA are associated with colorectal cancer (CRC) [MIM:114500].

Defects in PIK3CA are a cause of susceptibility to breast cancer (BC) [MIM:114480]. A common malignancy originating from breast epithelial tissue. Breast neoplasms can be distinguished by their histologic pattern. Invasive ductal carcinoma is by far the most common type. Breast cancer is etiologically and genetically heterogeneous. Important genetic factors have been indicated by familial occurrence and bilateral involvement. Mutations at more than one locus can be involved in different families or even in the same case.

Defects in PIK3CA are a cause of susceptibility to ovarian cancer (OC) [MIM:167000]. Ovarian cancer common malignancy originating from ovarian tissue. Although many histologic types of ovarian neoplasms have been described, epithelial ovarian carcinoma is the most common form. Ovarian cancers are often asymptomatic and the recognized signs and symptoms, even of late-stage disease, are vague. Consequently, most patients are diagnosed with advanced disease.

Defects in PIK3CA may underlie hepatocellular carcinoma (HCC) [MIM:114550].

Defects in PIK3CA are a cause of keratosis seborrheic (KERSEB) [MIM:182000]. A common benign skin tumor. Seborrheic keratoses usually begin with the appearance of one or more sharply defined, light brown, flat macules. The lesions may be sparse or numerous. As they initially grow, they develop a velvety to finely verrucous surface, followed by an uneven warty surface with multiple plugged follicles and a dull or lackluster appearance.

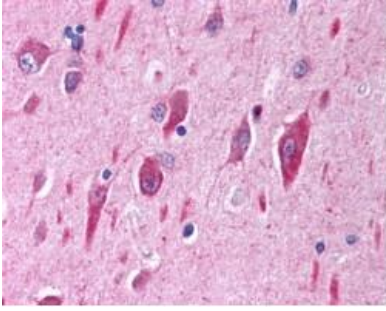
序列相似性

Belongs to the PI3/P14-kinase family.

Contains 1 C2 domain.

Contains 1 PI3K/P14K domain.

图片



ab87530, at 2.0 ug/ml, staining PI 3 Kinase catalytic subunit alpha in paraffin-embedded Human cerebellar cortex tissue.

Immunohistochemistry (Formalin/PFA-fixed paraffin-embedded sections) - Anti-PI 3 Kinase catalytic subunit alpha antibody (ab87530)

Please note: All products are "FOR RESEARCH USE ONLY AND ARE NOT INTENDED FOR DIAGNOSTIC OR THERAPEUTIC USE"

Our Abpromise to you: Quality guaranteed and expert technical support

- Replacement or refund for products not performing as stated on the datasheet
- Valid for 12 months from date of delivery
- Response to your inquiry within 24 hours
- We provide support in Chinese, English, French, German, Japanese and Spanish
- Extensive multi-media technical resources to help you
- We investigate all quality concerns to ensure our products perform to the highest standards

If the product does not perform as described on this datasheet, we will offer a refund or replacement. For full details of the Abpromise, please visit <http://www.abcam.cn/abpromise> or contact our technical team.

Terms and conditions

- Guarantee only valid for products bought direct from Abcam or one of our authorized distributors