


Product datasheet

Anti-PHF3 antibody ab111116

1 图像

概述

产品名称	Anti-PHF3抗体
描述	兔多克隆抗体to PHF3
宿主	Rabbit
特异性	ab111116 detects endogenous levels of total PHF3 protein.
经测试应用	适用于: IHC-P
种属反应性	与反应: Human 预测可用于: Mouse 
免疫原	Synthetic peptide (Human) from C-terminal
阳性对照	Human breast carcinoma tissue

性能

形式	Liquid
存放说明	Shipped at 4°C. Store at -20°C. Stable for 12 months at -20°C.
存储溶液	pH: 7.40 Preservative: 0.02% Sodium azide Constituents: 50% Glycerol, 0.88% Sodium chloride, 49.1% PBS Note: PBS is without Mg ²⁺ and Ca ²⁺ .
纯度	Immunogen affinity purified
纯化说明	ab111116 was affinity purified from rabbit antiserum by affinity chromatography using epitope specific immunogen.
克隆	多克隆
同种型	IgG

应用

Our [Abpromise guarantee](#) covers the use of **ab111116** in the following tested applications.

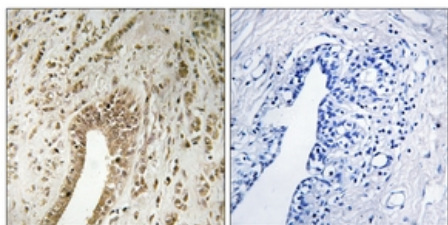
The application notes include recommended starting dilutions; optimal dilutions/concentrations should be determined by the end user.

应用	Ab评论	说明
IHC-P		Use at an assay dependent concentration. Perform heat mediated antigen retrieval with citrate buffer pH 6 before commencing with IHC staining protocol.

靶标

组织特异性	Ubiquitous. Expression is significantly reduced or lost in glioblastomas, glioblastoma cell lines, anaplastic astrocytomas, and astrocytomas.
序列相似性	Contains 1 PHD-type zinc finger. Contains 1 TFIIIS central domain.
翻译后修饰	Phosphorylated upon DNA damage, probably by ATM or ATR.

图片



ab111116, at a 1/50 dilution, staining PHF3 in paraffin embedded Human breast carcinoma tissue by Immunohistochemistry. Image on the right was from tissue treated with the synthetic peptide.

Immunohistochemistry (Formalin/PFA-fixed paraffin-embedded sections) - PHF3 antibody (ab111116)

Please note: All products are "FOR RESEARCH USE ONLY AND ARE NOT INTENDED FOR DIAGNOSTIC OR THERAPEUTIC USE"

Our Abpromise to you: Quality guaranteed and expert technical support

- Replacement or refund for products not performing as stated on the datasheet
- Valid for 12 months from date of delivery
- Response to your inquiry within 24 hours
- We provide support in Chinese, English, French, German, Japanese and Spanish
- Extensive multi-media technical resources to help you
- We investigate all quality concerns to ensure our products perform to the highest standards

If the product does not perform as described on this datasheet, we will offer a refund or replacement. For full details of the Abpromise, please visit <http://www.abcam.cn/abpromise> or contact our technical team.

Terms and conditions

- Guarantee only valid for products bought direct from Abcam or one of our authorized distributors