


## Product datasheet

# Anti-PCK2 antibody ab40843

★★★★★ 1 Abreviews 4 References 2 图像

### 概述

|              |  |
|--------------|--|
| <b>产品名称</b>  | Anti-PCK2抗体  |
| <b>描述</b>    | 山羊多克隆抗体to PCK2   |
| <b>特异性</b>   | This antibody is expected to recognise isoform 1 (NP_004554) only, no cross-reactivity with PCK1.  |
| <b>经测试应用</b> | <b>适用于:</b> WB   |
| <b>种属反应性</b> | <b>与反应:</b> Mouse, Rat, Guinea pig, Human<br><b>预测可用于:</b> Cow, Dog, Pig                      |
| <b>免疫原</b>   | Synthetic peptide:<br>KPWKPGDKEPCAH<br>, corresponding to Internal sequence amino acids 407-419 of Human PCK2<br><a href="#">Run BLAST with</a> <a href="#">Run BLAST with</a> |
| <b>阳性对照</b>  | Human liver lysate and HepG2   |

### 性能

|             |   |
|-------------|---|
| <b>形式</b>   | Liquid  |
| <b>存放说明</b> | Shipped at 4°C. Upon delivery aliquot and store at -20°C. Avoid freeze / thaw cycles.   |
| <b>存储溶液</b> | Preservative: 0.02% Sodium Azide<br>Constituents: 0.5% BSA, Tris saline, pH 7.3   |
| <b>纯度</b>   | Immunogen affinity purified   |
| <b>纯化说明</b> | Purified from goat serum by ammonium sulphate precipitation followed by antigen affinity chromatography using the immunizing peptide. |
| <b>克隆</b>   | 多克隆   |
| <b>同种型</b>  | IgG   |

### 应用

Our [Abpromise guarantee](#) covers the use of **ab40843** in the following tested applications.

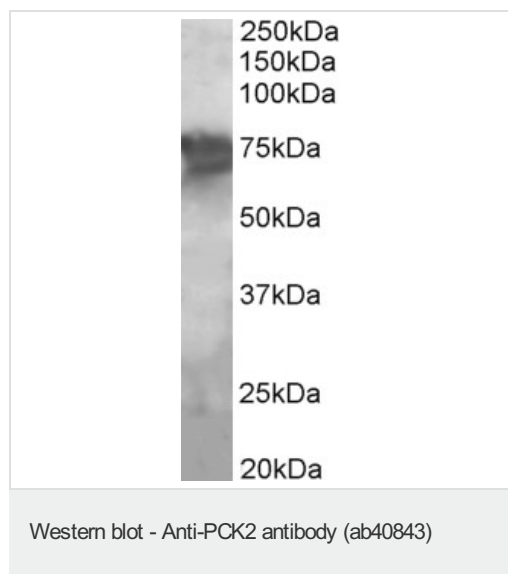
The application notes include recommended starting dilutions; optimal dilutions/concentrations should be determined by the end user.

| 应用 | Ab评论  | 说明  |
|----|-------|---|
| WB | ★★★★★ | Use a concentration of 2 - 4 µg/ml. Predicted molecular weight: 71 kDa. |

## 靶标

|       |   |
|-------|---|
| 功能    | Catalyzes the conversion of oxaloacetate (OAA) to phosphoenolpyruvate (PEP), the rate-limiting step in the metabolic pathway that produces glucose from lactate and other precursors derived from the citric acid cycle.  |
| 通路    | Carbohydrate biosynthesis; gluconeogenesis.   |
| 疾病相关  | Defects in PCK2 are the cause of mitochondrial phosphoenolpyruvate carboxykinase deficiency (M-PEPCKD) [MIM:261650]. A metabolic disorder resulting from impaired gluconeogenesis. It is a rare disease with less than 10 cases reported in the literature. Clinical characteristics include hypotonia, hepatomegaly, failure to thrive, lactic acidosis and hypoglycemia. Autopsy reveals fatty infiltration of both the liver and kidneys. The disorder is transmitted as an autosomal recessive trait. |
| 序列相似性 | Belongs to the phosphoenolpyruvate carboxykinase [GTP] family.  |
| 翻译后修饰 | Phosphorylated upon DNA damage, probably by ATM or ATR.   |
| 细胞定位  | Mitochondrion.  |

## 图片



Anti-PCK2 antibody (ab40843) at 2 µg/ml +  
Human Liver lysate at 35 µg/ml

**Predicted band size** : 71 kDa

**Observed band size** : 75 kDa

Primary incubation was 1 hour. Detected by  
chemiluminescence.



Western blot - PCK2 antibody (ab40843)

Anti-PCK2 antibody (ab40843) at 0.1 µg/ml +  
Human HepG2 lysate (35µg protein in RIPA  
buffer).

**Predicted band size** : 71 kDa

**Observed band size** : 71 kDa

Primary incubation was 1 hour. Detected by  
chemiluminescence.

**Please note:** All products are "FOR RESEARCH USE ONLY AND ARE NOT INTENDED FOR DIAGNOSTIC OR THERAPEUTIC USE"

### Our Abpromise to you: Quality guaranteed and expert technical support

- Replacement or refund for products not performing as stated on the datasheet
- Valid for 12 months from date of delivery
- Response to your inquiry within 24 hours
- We provide support in Chinese, English, French, German, Japanese and Spanish
- Extensive multi-media technical resources to help you
- We investigate all quality concerns to ensure our products perform to the highest standards

If the product does not perform as described on this datasheet, we will offer a refund or replacement. For full details of the Abpromise, please visit <http://www.abcam.cn/abpromise> or contact our technical team.

### Terms and conditions

- Guarantee only valid for products bought direct from Abcam or one of our authorized distributors