

## Product datasheet

# Anti-PAX8 antibody [BC12] ab124445

★★★★☆ 1 Abreviews 1 图像

### 概述

<b>产品名称</b>	Anti-PAX8抗体[BC12]
<b>描述</b>	小鼠单克隆抗体[BC12] to PAX8
<b>特异性</b>	ab124445 does not stain B-cells, and does not recognize epitopes of pancreatic origin and neuroendocrine cells in stomach and colon.
<b>经测试应用</b>	<b>适用于:</b> IHC-P, WB
<b>种属反应性</b>	<b>与反应:</b> Mouse, Rat, Cat, Dog, Human
<b>免疫原</b>	Other Immunogen Type corresponding to PAX8.
<b>阳性对照</b>	Human normal kidney, renal cell or serous ovarian carcinoma tissues.
<b>常规说明</b>	Make dilutions in Renoir Red diluent.

### 性能

<b>形式</b>	Liquid
<b>存放说明</b>	Shipped at 4°C. Store at +4°C short term (1-2 weeks). Store at -20°C or -80°C. Avoid freeze / thaw cycle.
<b>存储溶液</b>	Preservative: 0.099% Sodium azide Constituents: 0.9% Proprietary component, 99% Water  Buffer contains protein carrier.
<b>纯度</b>	Tissue culture supernatant
<b>克隆</b>	单克隆
<b>克隆编号</b>	BC12
<b>同种型</b>	IgG1

### 应用

Our [Abpromise guarantee](#) covers the use of **ab124445** in the following tested applications.

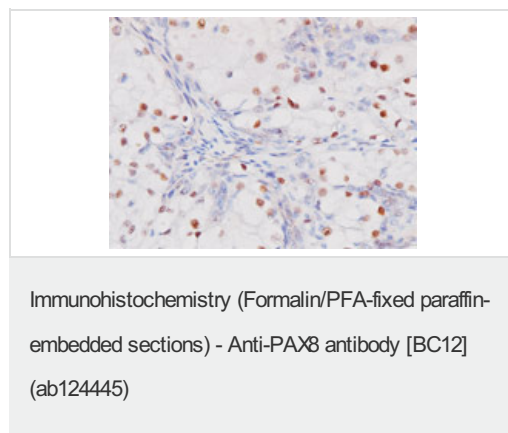
The application notes include recommended starting dilutions; optimal dilutions/concentrations should be determined by the end user.

应用	Ab评论	说明
IHC-P		1/100 - 1/200. Perform heat mediated antigen retrieval via the pressure cooker method before commencing with IHC staining protocol.
WB	★★★★☆	Use at an assay dependent concentration.

## 靶标

<b>功能</b>	Transcription factor for the thyroid-specific expression of the genes exclusively expressed in the thyroid cell type, maintaining the functional differentiation of such cells.
<b>组织特异性</b>	Expressed in the excretory system, thyroid gland and Wilms tumors.
<b>疾病相关</b>	Defects in PAX8 are the cause of congenital hypothyroidism non-goitrous type 2 (CHNG2) [MIM:218700]. CHNG2 is a disease characterized by thyroid dysgenesis, the most frequent cause of congenital hypothyroidism, accounting for 85% of case. The thyroid gland can be completely absent (athyreosis), ectopically located and/or severely hypoplastic. Ectopic thyroid gland is the most frequent malformation, with thyroid tissue being found most often at the base of the tongue.
<b>序列相似性</b>	Contains 1 paired domain.
<b>发展阶段</b>	In developing excretory system, during thyroid differentiation and in adult thyroid.
<b>细胞定位</b>	Nucleus.

## 图片



ab124445 at 1/100 dilution staining PAX8 in formalin-fixed paraffin-embedded Human Renal cell carcinoma tissue by Immunohistochemistry.

**Please note:** All products are "FOR RESEARCH USE ONLY AND ARE NOT INTENDED FOR DIAGNOSTIC OR THERAPEUTIC USE"

## Our Abpromise to you: Quality guaranteed and expert technical support

- Replacement or refund for products not performing as stated on the datasheet
- Valid for 12 months from date of delivery
- Response to your inquiry within 24 hours

- We provide support in Chinese, English, French, German, Japanese and Spanish
- Extensive multi-media technical resources to help you
- We investigate all quality concerns to ensure our products perform to the highest standards

If the product does not perform as described on this datasheet, we will offer a refund or replacement. For full details of the Abpromise, please visit <http://www.abcam.cn/abpromise> or contact our technical team.

### **Terms and conditions**

---

- Guarantee only valid for products bought direct from Abcam or one of our authorized distributors