

Product datasheet

Anti-PAX6 antibody [AD2.38] ab78545

★★★★☆ 6 Abreviews 15 References 6 图像

概述

| | |
|--------------|---|
| 产品名称 | Anti-PAX6抗体[AD2.38] |
| 描述 | 小鼠单克隆抗体[AD2.38] to PAX6 |
| 宿主 | Mouse |
| 特异性 | This antibody recognizes both products of the two major alternatively spliced forms. In our hands this product does not detect a band of interest in Western Blot. |
| 经测试应用 | 适用于: IHC-Fr, Sandwich ELISA, IHC-P, ICC/IF, IHC-FoFr 不适用于: WB |
| 种属反应性 | 与反应: Mouse, Human 预测可用于: Rat, Chicken |
| 免疫原 | Recombinant full length protein corresponding to Human PAX6. |
| 阳性对照 | IHC-P: FFPE Human pancreas normal, Rat retina. |
| 常规说明 | This antibody clone is manufactured by Abcam. If you require this antibody in a particular buffer formulation or a particular conjugate for your experiments, please contact orders@abcam.com or you can find further information here . |

性能

| | |
|-------------|---|
| 形式 | Liquid |
| 存放说明 | Shipped at 4°C. Upon delivery aliquot and store at -20°C or -80°C. Avoid repeated freeze / thaw cycles. |
| 存储溶液 | pH: 7.40 Preservative: 0.02% Sodium azide Constituent: PBS |
| 纯度 | Immunogen affinity purified |
| 克隆 | 单克隆 |
| 克隆编号 | AD2.38 |
| 同种型 | IgG1 |

应用

Our [Abpromise guarantee](#) covers the use of **ab78545** in the following tested applications.

The application notes include recommended starting dilutions; optimal dilutions/concentrations should be determined by the end user.

| 应用 | Ab评论 | 说明 |
|----------------|-------|--|
| IHC-Fr | ★★★★☆ | Use at an assay dependent concentration. |
| Sandwich ELISA | | Use a concentration of 5 µg/ml. Can be paired for Sandwich ELISA with Rabbit polyclonal to PAX6 (ab82510) . For sandwich ELISA, use this antibody as Capture at 5 µg/ml with Rabbit polyclonal to PAX6 (ab82510) as Detection. |
| IHC-P | | Use a concentration of 10 - 20 µg/ml. Perform heat mediated antigen retrieval with citrate buffer pH 6 before commencing with IHC staining protocol. |
| ICC/IF | ★★★★☆ | Use at an assay dependent concentration. |
| IHC-FoFr | | Use at an assay dependent concentration. |
| 应用说明 | | Is unsuitable for WB. |

靶标

| | |
|-------|---|
| 功能 | Transcription factor with important functions in the development of the eye, nose, central nervous system and pancreas. Required for the differentiation of pancreatic islet alpha cells (By similarity). Competes with PAX4 in binding to a common element in the glucagon, insulin and somatostatin promoters. Regulates specification of the ventral neuron subtypes by establishing the correct progenitor domains (By similarity). Isoform 5a appears to function as a molecular switch that specifies target genes. |
| 组织特异性 | Fetal eye, brain, spinal cord and olfactory epithelium. Isoform 5a is less abundant than the PAX6 shorter form. |
| 疾病相关 | <p>Defects in PAX6 are the cause of aniridia (AN) [MIM:106210]. A congenital, bilateral, panocular disorder characterized by complete absence of the iris or extreme iris hypoplasia. Aniridia is not just an isolated defect in iris development but it is associated with macular and optic nerve hypoplasia, cataract, corneal changes, nystagmus. Visual acuity is generally low but is unrelated to the degree of iris hypoplasia. Glaucoma is a secondary problem causing additional visual loss over time.</p> <p>Defects in PAX6 are a cause of Peters anomaly (PAN) [MIM:604229]. Peters anomaly consists of a central corneal leukoma, absence of the posterior corneal stroma and Descemet membrane, and a variable degree of iris and lenticular attachments to the central aspect of the posterior cornea.</p> <p>Defects in PAX6 are a cause of foveal hypoplasia (FOVHYP) [MIM:136520]. Foveal hypoplasia can be isolated or associated with presenile cataract. Inheritance is autosomal dominant.</p> <p>Defects in PAX6 are a cause of keratitis hereditary (KERH) [MIM:148190]. An ocular disorder characterized by corneal opacification, recurrent stromal keratitis and vascularization.</p> <p>Defects in PAX6 are a cause of coloboma ocular (COLO) [MIM:120200]; also known as uveoretinal coloboma or coloboma of iris, choroid and retina. Ocular colobomas are a set of malformations resulting from abnormal morphogenesis of the optic cup and stalk, and the fusion of the fetal fissure (optic fissure). Severe colobomatous malformations may cause as much as 10% of the childhood blindness. The clinical presentation of ocular coloboma is variable. Some individuals may present with minimal defects in the anterior iris leaf without other ocular defects. More complex malformations create a combination of iris, uveoretinal and/or optic nerve defects</p> |

without or with microphthalmia or even anophthalmia.

Defects in PAX6 are a cause of coloboma of optic nerve (COLON) [MIM:120430].

Defects in PAX6 are a cause of bilateral optic nerve hypoplasia (BONH) [MIM:165550]; also known as bilateral optic nerve aplasia. A congenital anomaly in which the optic disc appears abnormally small. It may be an isolated finding or part of a spectrum of anatomic and functional abnormalities that includes partial or complete agenesis of the septum pellucidum, other midline brain defects, cerebral anomalies, pituitary dysfunction, and structural abnormalities of the pituitary.

Defects in PAX6 are a cause of aniridia cerebellar ataxia and mental deficiency (ACAMD) [MIM:206700]; also known as Gillespie syndrome. A rare condition consisting of partial rudimentary iris, cerebellar impairment of the ability to perform coordinated voluntary movements, and mental retardation.

序列相似性

Belongs to the paired homeobox family.

Contains 1 homeobox DNA-binding domain.

Contains 1 paired domain.

发展阶段

Expressed in the developing eye and brain.

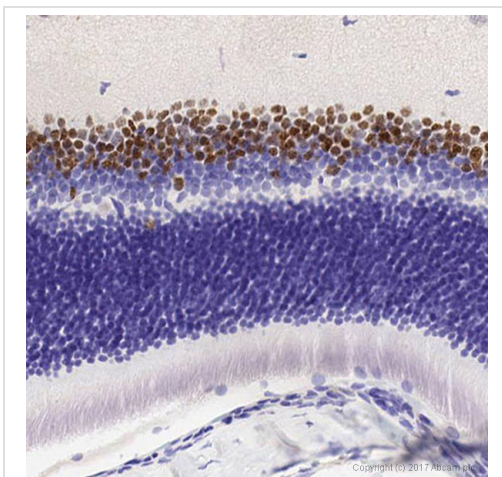
翻译后修饰

Ubiquitinated by TRIM11, leading to ubiquitination and proteasomal degradation.

细胞定位

Nucleus.

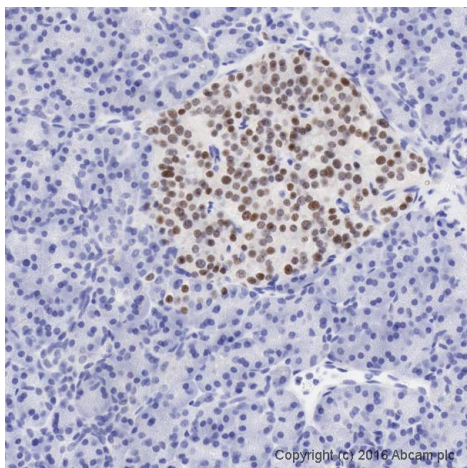
图片



Immunohistochemistry (Formalin/PFA-fixed paraffin-embedded sections) - Anti-PAX6 antibody [AD2.38] (ab78545)

IHC image of Pax6 staining in a formalin fixed, paraffin embedded normal rat retina tissue section, performed on a Leica Bond™ system using the standard protocol F. The section was pre-treated using heat mediated antigen retrieval with sodium citrate buffer (pH6, epitope retrieval solution 1) for 20 mins. The section was then incubated with ab78545, 5µg/ml, for 15 mins at room temperature and detected using an HRP conjugated compact polymer system. DAB was used as the chromogen. The section was then counterstained with haematoxylin and mounted with DPX.

For other IHC staining systems (automated and non-automated) customers should optimize variable parameters such as antigen retrieval conditions, primary antibody concentration and antibody incubation times.

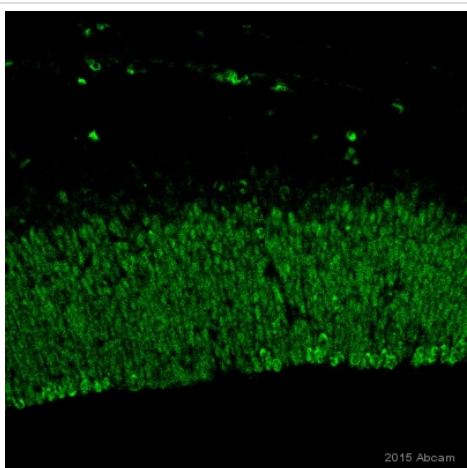


Immunohistochemistry (Formalin/PFA-fixed paraffin-embedded sections) - Anti-PAX6 antibody [AD2.38] (ab78545)

IHC image of PAX6 staining in a formalin fixed, paraffin embedded normal human pancreas tissue section*performed on a Leica Bond™ system using the standard protocol F. The section was pre-treated using heat mediated antigen retrieval with sodium citrate buffer (pH6, epitope retrieval solution 1) for 20 mins. The section was then incubated with ab78545, 20µg/ml, for 15 mins at room temperature and detected using an HRP conjugated compact polymer system. DAB was used as the chromogen. The section was then counterstained with haematoxylin and mounted with DPX.

For other IHC staining systems (automated and non-automated) customers should optimize variable parameters such as antigen retrieval conditions, primary antibody concentration and antibody incubation times.

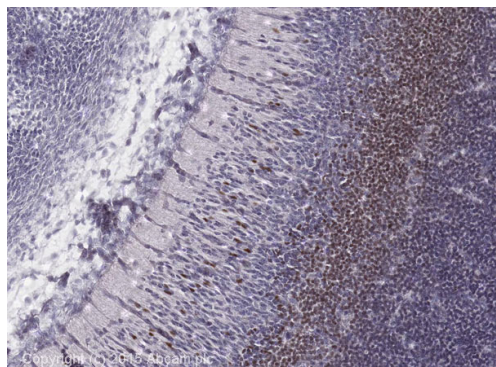
*Tissue obtained from the Human Research Tissue Bank, supported by the NIHR Cambridge Biomedical Research Centre



Immunohistochemistry (Frozen sections) - Anti-PAX6 antibody [AD2.38] (ab78545)

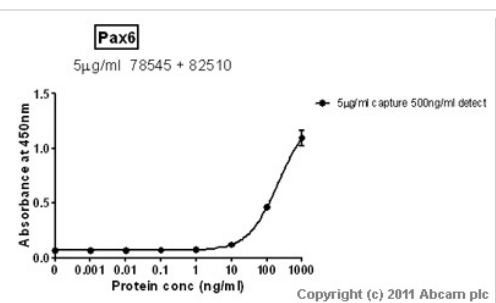
Image is courtesy of an AbReview submitted by Dr Bhavin Shah.

Immunohistochemical analysis of PFA-fixed frozen murine embryonic brain coronal sections, labelling PAX6 with ab78545 at a dilution of 1/100 incubated for 8 hours at 4°C in blocking buffer diluent. Permeabilization was with Triton X-100 and blocking was with 1% serum for 1 hour. Heat mediated antigen retrieval was with 10mM sodium citrate buffer pH6.0 for 10 minutes at 650W in a microwave. The secondary was a goat Alexa Fluor® 488 at 1/700.



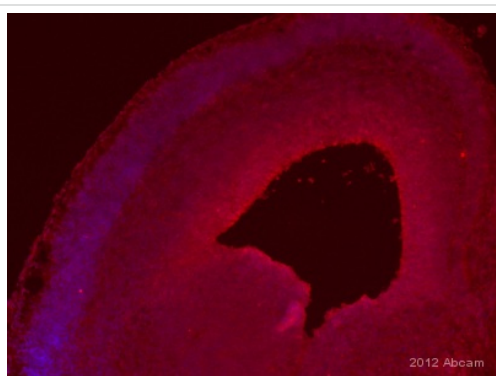
Immunohistochemistry (Formalin/PFA-fixed paraffin-embedded sections) - Anti-PAX6 antibody [AD2.38] (ab78545)

IHC image of PAX6 staining in mouse e14 foetus formalin fixed paraffin embedded tissue section, with the use of Mouse on Mouse Polymer IHC Kit (Ab127055). The section was pre-treated using pressure cooker heat mediated antigen retrieval with sodium citrate buffer (pH6) for 30mins. The section was incubated with ab78545, 10µg/ml overnight at +4°C. The Mouse on Mouse HRP Polymer was incubated for 15 minutes at room temperature. The section was counterstained with haematoxylin and mounted with DPX.



Sandwich ELISA - Anti-PAX6 antibody [AD2.38] (ab78545)

Standard Curve for Pax6; dilution range 1 pg/ml to 1 ug/ml using Capture Antibody Mouse monoclonal [AD2.38] to PAX6 (ab78545) at 5 ug/ml and Detector Antibody Rabbit polyclonal to PAX6 (ab82510) at 0.5 ug/ml.



Immunohistochemistry (Frozen sections) - Anti-PAX6 antibody [AD2.38] (ab78545)
This image is courtesy of an anonymous Abreview.

Immunohistochemical analysis of mouse brain tissue, staining PAX6 with ab78545.

Tissue was fixed with paraformaldehyde and blocked with 10% serum for 1 hour at room temperature. Samples were incubated with primary antibody (1/100 in PBST) for 12 hours at 4°C. An AlexaFluor®568-conjugated goat anti-mouse polyclonal IgG (1/1000) was used as the secondary antibody.

Please note: All products are "FOR RESEARCH USE ONLY AND ARE NOT INTENDED FOR DIAGNOSTIC OR THERAPEUTIC USE"

Our Abpromise to you: Quality guaranteed and expert technical support

- Replacement or refund for products not performing as stated on the datasheet

- Valid for 12 months from date of delivery
- Response to your inquiry within 24 hours

- We provide support in Chinese, English, French, German, Japanese and Spanish
- Extensive multi-media technical resources to help you
- We investigate all quality concerns to ensure our products perform to the highest standards

If the product does not perform as described on this datasheet, we will offer a refund or replacement. For full details of the Abpromise, please visit <http://www.abcam.cn/abpromise> or contact our technical team.

Terms and conditions

- Guarantee only valid for products bought direct from Abcam or one of our authorized distributors