


Product datasheet

Anti-PATZ1 antibody ab83251

1 图像

概述

| | |
|--------------|--|
| 产品名称 | Anti-PATZ1抗体 |
| 描述 | 兔多克隆抗体to PATZ1 |
| 宿主 | Rabbit |
| 经测试应用 | 适用于: WB, ELISA |
| 种属反应性 | 与反应: Human 预测可用于: Mouse, Rat, Rabbit, Horse, Chicken, Guinea pig, Cow, Cat, Dog, Zebrafish  |
| 免疫原 | Synthetic peptide from within internal sequence amino acids 611-660: SFFRSKSYLN KHIQKVHVRA LGGPLGDLGP ALGSPFSPQQ NMSLLESFGF, of Human PATZ1 (NP_055138) Run BLAST with ExPASy Run BLAST with NCBI |
| 阳性对照 | HepG2 cell lysate |

性能

| | |
|-------------|---|
| 形式 | Liquid |
| 存放说明 | Shipped at 4°C. Upon delivery aliquot and store at -20°C or -80°C. Avoid repeated freeze / thaw cycles. |
| 存储溶液 | Preservative: None Constituents: 2% Sucrose, PBS |
| 纯度 | Immunogen affinity purified |
| 克隆 | 多克隆 |
| 同种型 | IgG |

应用

Our [Abpromise guarantee](#) covers the use of **ab83251** in the following tested applications.

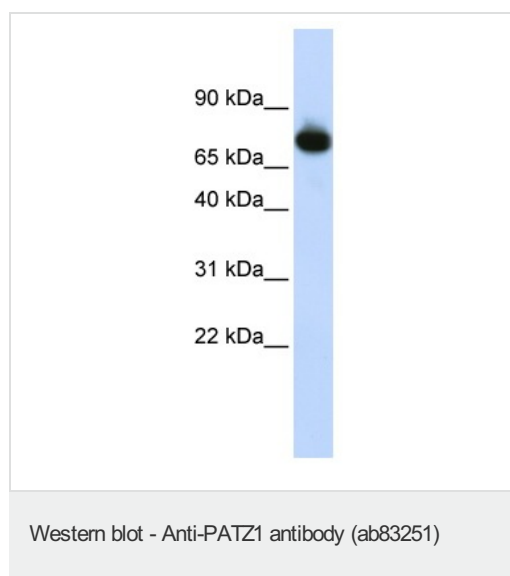
The application notes include recommended starting dilutions; optimal dilutions/concentrations should be determined by the end user.

| 应用 | Ab评论 | 说明 |
|-------|------|--|
| WB | | Use a concentration of 1 µg/ml. Predicted molecular weight: 74 kDa. Good results were obtained when blocked with 5% non-fat dry milk in 0.05% PBS-T. |
| ELISA | | Use at an assay dependent concentration. ELISA titre using peptide based assay: 1/1562500. |

靶标

| | |
|-------|--|
| 功能 | Transcriptional repressor. |
| 组织特异性 | Ubiquitous. |
| 疾病相关 | A chromosomal aberration involving PATZ1 is associated with small round cell sarcoma. Translocation t(1;22)(p36.1;q12) with EWSR1. |
| 序列相似性 | Belongs to the krueppel C2H2-type zinc-finger protein family. Contains 1 A.T hook DNA-binding domain. Contains 1 BTB (POZ) domain. Contains 7 C2H2-type zinc fingers. |
| 细胞定位 | Nucleus. |

图片



Anti-PATZ1 antibody (ab83251) at 1 µg/ml (in 5% skim milk/ PBS) + HepG2 cell lysate at 10 µg

Secondary

HRP conjugated anti-Rabbit IgG at 1/50000 dilution

Predicted band size: 74 kDa

Observed band size: 74 kDa

Please note: All products are "FOR RESEARCH USE ONLY AND ARE NOT INTENDED FOR DIAGNOSTIC OR THERAPEUTIC USE"

Our Abpromise to you: Quality guaranteed and expert technical support

- Replacement or refund for products not performing as stated on the datasheet
- Valid for 12 months from date of delivery

- Response to your inquiry within 24 hours
- We provide support in Chinese, English, French, German, Japanese and Spanish
- Extensive multi-media technical resources to help you
- We investigate all quality concerns to ensure our products perform to the highest standards

If the product does not perform as described on this datasheet, we will offer a refund or replacement. For full details of the Abpromise, please visit <http://www.abcam.cn/abpromise> or contact our technical team.

Terms and conditions

- Guarantee only valid for products bought direct from Abcam or one of our authorized distributors