

Product datasheet

Anti-PARP10 antibody ab70800

3 图像

概述

产品名称	Anti-PARP10抗体
描述	兔多克隆抗体to PARP10
宿主	Rabbit
经测试应用	适用于: IHC-P, WB, IP
种属反应性	与反应: Human
免疫原	Synthetic peptide corresponding to a region between residues 300 and 350 of Human PARP10 (NP_116178.1)
阳性对照	Whole cell lysate from HeLa cells.

性能

形式	Liquid
存放说明	Shipped at 4°C. Upon delivery aliquot and store at -20°C. Avoid freeze / thaw cycles.
存储溶液	Preservative: 0.09% Sodium Azide Constituents: 8mM PBS, 60mM Citrate, 150mM Tris, pH 7-8
纯度	Immunogen affinity purified
克隆	多克隆
同种型	IgG

应用

Our [Abpromise guarantee](#) covers the use of **ab70800** in the following tested applications.

The application notes include recommended starting dilutions; optimal dilutions/concentrations should be determined by the end user.

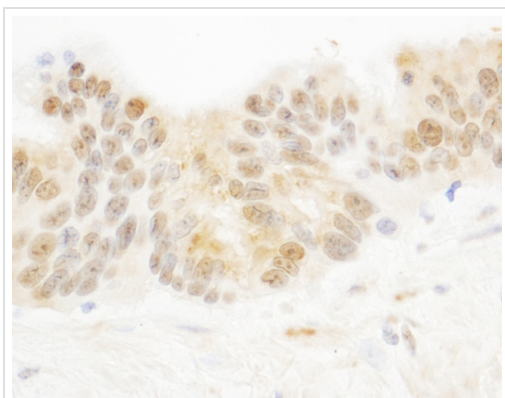
应用	Ab评论	说明
IHC-P		1/500 - 1/2000. Perform heat mediated antigen retrieval with citrate buffer pH 6 before commencing with IHC staining protocol.
WB		1/500 - 1/2500. Detects a band of approximately 123 kDa (predicted molecular weight: 123 kDa).

应用	Ab评论	说明
IP		Use at 1-4 µg/mg of lysate.

靶标

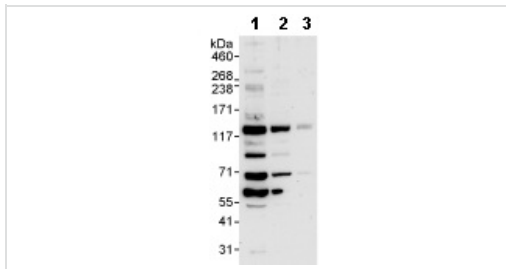
相关性	Poly (ADP ribose) polymerases (PARPs), such as PARP10, regulate gene transcription by altering chromatin organization by adding ADP ribose to histones. PARPs can also function as transcriptional cofactors
细胞定位	Nuclear

图片



Immunohistochemistry (Formalin/PFA-fixed paraffin-embedded sections) analysis of human ovarian carcinoma tissue labelling PARP10 with ab70800 at 1/1000 (1 µg/ml).
Detection: DAB.

Immunohistochemistry (Formalin/PFA-fixed paraffin-embedded sections) - Anti-PARP10 antibody (ab70800)



Western blot - Anti-PARP10 antibody (ab70800)

All lanes : Anti-PARP10 antibody (ab70800)
at 1 µg/ml

Lane 1 : HeLa whole cell lysate at 50 µg

Lane 2 : HeLa whole cell lysate at 15 µg

Lane 3 : HeLa whole cell lysate at 5 µg

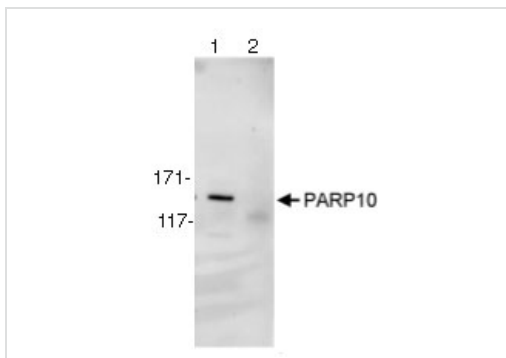
Developed using the ECL technique.

Predicted band size: 123 kDa

Observed band size: 123 kDa

Additional bands at: 60 kDa, 70 kDa, 90 kDa. We are unsure as to the identity of these extra bands.

Exposure time: 3 minutes



Immunoprecipitation - Anti-PARP10 antibody
(ab70800)

1mg of whole cell lysate from HeLa cells was immunoprecipitated using ab70800 at 3µg/mg of lysate (lane 1) or a control rabbit Ig (lane 2). For the subsequent western blot, 20% of immunoprecipitate was loaded per lane, and probed with ab70800 at 1µg/ml. Detection: chemiluminescence with exposure time of 30 seconds.

Please note: All products are "FOR RESEARCH USE ONLY AND ARE NOT INTENDED FOR DIAGNOSTIC OR THERAPEUTIC USE"

Our Abpromise to you: Quality guaranteed and expert technical support

- Replacement or refund for products not performing as stated on the datasheet
- Valid for 12 months from date of delivery
- Response to your inquiry within 24 hours
- We provide support in Chinese, English, French, German, Japanese and Spanish
- Extensive multi-media technical resources to help you
- We investigate all quality concerns to ensure our products perform to the highest standards

If the product does not perform as described on this datasheet, we will offer a refund or replacement. For full details of the Abpromise, please visit <http://www.abcam.cn/abpromise> or contact our technical team.

Terms and conditions

- Guarantee only valid for products bought direct from Abcam or one of our authorized distributors