

Product datasheet

Anti-P70 S6 Kinase beta antibody ab70963

1 图像

概述

产品名称	Anti-P70 S6 Kinase beta 抗体
描述	兔多克隆抗体 to P70 S6 Kinase beta
经测试应用	适用于: WB, ELISA
种属反应性	与反应: Human 预测可用于: Mouse
免疫原	KLH conjugated synthetic peptide selected from the Center region of human RPS6KB2. Immunogen sequence for this antibody is proprietary.
阳性对照	293 cell lysate transiently transfected with the P70 S6 Kinase beta gene.

性能

形式	Liquid
存放说明	Shipped at 4°C. Upon delivery aliquot and store at -20°C or -80°C. Avoid repeated freeze / thaw cycles.
存储溶液	Preservative: 0.09% Sodium Azide Constituents: PBS
纯度	Ammonium Sulphate Precipitation
纯化说明	This antibody is prepared by Saturated Ammonium Sulfate (SAS) recipitation followed by dialysis against PBS.
克隆	多克隆
同种型	IgG

应用

Our [Abpromise guarantee](#) covers the use of **ab70963** in the following tested applications.

The application notes include recommended starting dilutions; optimal dilutions/concentrations should be determined by the end user.

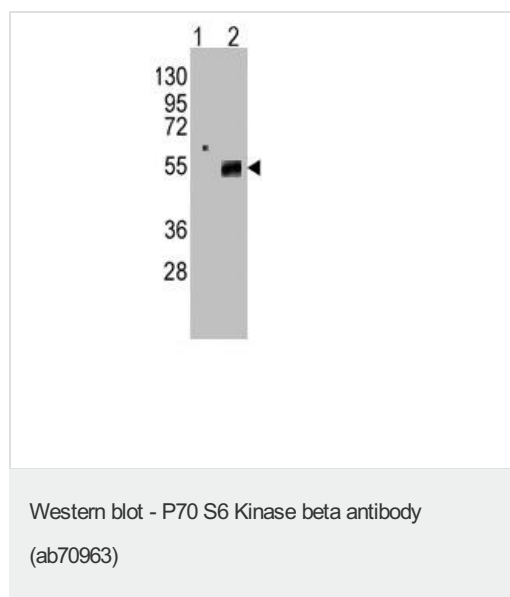
应用	Ab评论	说明
WB		1/50 - 1/100. Detects a band of approximately 53 kDa (predicted molecular weight: 53 kDa).

应用	Ab评论	说明
ELISA		1/1000.

靶标

功能	Phosphorylates specifically ribosomal protein S6.
序列相似性	Belongs to the protein kinase superfamily. AGC Ser/Thr protein kinase family. S6 kinase subfamily. Contains 1 AGC-kinase C-terminal domain. Contains 1 protein kinase domain.
翻译后修饰	Phosphorylated upon DNA damage, probably by ATM or ATR.

图片



All lanes : Anti-P70 S6 Kinase beta antibody (ab70963) at 1/50 dilution

Lane 1 : 293 cell lysate, non transfected

Lane 2 : 293 cell lysate transiently transfected with the P70 S6 Kinase beta gene

Lysates/proteins at 2 µg per lane.

Predicted band size : 53 kDa

Observed band size : 53 kDa

Please note: All products are "FOR RESEARCH USE ONLY AND ARE NOT INTENDED FOR DIAGNOSTIC OR THERAPEUTIC USE"

Our Abpromise to you: Quality guaranteed and expert technical support

- Replacement or refund for products not performing as stated on the datasheet
- Valid for 12 months from date of delivery
- Response to your inquiry within 24 hours
- We provide support in Chinese, English, French, German, Japanese and Spanish
- Extensive multi-media technical resources to help you
- We investigate all quality concerns to ensure our products perform to the highest standards

If the product does not perform as described on this datasheet, we will offer a refund or replacement. For full details of the Abpromise, please visit <http://www.abcam.cn/abpromise> or contact our technical team.

Terms and conditions

- Guarantee only valid for products bought direct from Abcam or one of our authorized distributors