

Product datasheet

Anti-Osteopontin antibody ab33046

★★★★☆ 1 Abreviews 6 References 2 图像

概述

产品名称	Anti-Osteopontin抗体
描述	兔多克隆抗体to Osteopontin
宿主	Rabbit
经测试应用	适用于: ELISA, WB, IHC-P
种属反应性	与反应: Human 预测可用于: Mouse, Guinea pig, Cow
免疫原	A region within synthetic peptide: LSKVSREFHS HEFHSHEML VVDPKSKEED KHLKFRISHE LDSASSEVN, corresponding to C terminal amino acids 252-300 of Human Osteopontin Run BLAST with ExPASy Run BLAST with NCBI
阳性对照	WB: Jurkat cell lysate. IHC-P: Human kidney.

性能

形式	Liquid
存放说明	Shipped at 4°C. Store at +4°C short term (1-2 weeks). Upon delivery aliquot. Store at -20°C long term.
存储溶液	Preservative: None Constituents: 2% Sucrose, PBS
纯度	Protein A purified
克隆	多克隆
同种型	IgG

应用

Our [Abpromise guarantee](#) covers the use of **ab33046** in the following tested applications.

The application notes include recommended starting dilutions; optimal dilutions/concentrations should be determined by the end user.

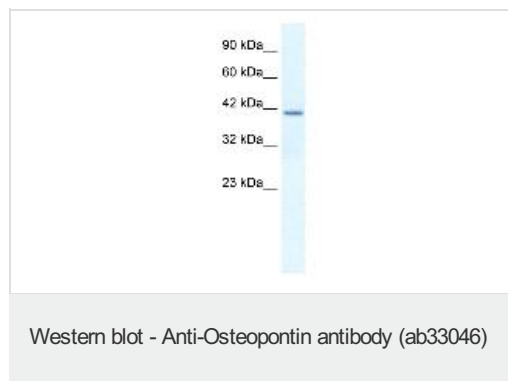
应用	Ab评论	说明
ELISA		1/1.5625e+006.

应用	Ab评论	说明
WB	★★★★☆	Use a concentration of 1.25 µg/ml. Predicted molecular weight: 35 kDa. Good results were obtained when blocked with 5% non-fat dry milk in 0.05% PBS-T.
IHC-P		Use at an assay dependent concentration.

靶标

功能	<p>Binds tightly to hydroxyapatite. Appears to form an integral part of the mineralized matrix. Probably important to cell-matrix interaction.</p> <p>Acts as a cytokine involved in enhancing production of interferon-gamma and interleukin-12 and reducing production of interleukin-10 and is essential in the pathway that leads to type I immunity.</p>
组织特异性	Bone. Found in plasma.
序列相似性	Belongs to the osteopontin family.
翻译后修饰	<p>Extensively phosphorylated on clustered serine residues.</p> <p>N- and O-glycosylated.</p> <p>Phosphorylation sites are present in the extracellular medium.</p>
细胞定位	Secreted.

图片



Anti-Osteopontin antibody (ab33046) at 1.25 µg/ml (in 5% skim milk / PBS buffer) + Jurkat cell lysate at 10 µg

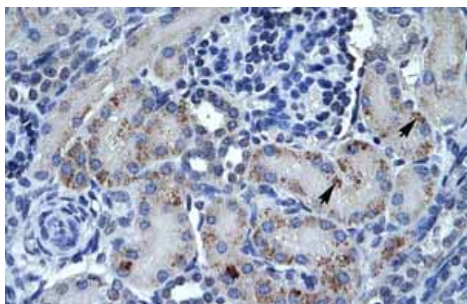
Secondary

HRP conjugated anti Rabbit IgG at 1/50000 dilution

Predicted band size: 35 kDa

Observed band size: 40 kDa

Gel concentration: 12%



Immunohistochemistry (Formalin/PFA-fixed paraffin-embedded sections) analysis of human kidney tissue labelling Osteopontin with ab33046 at 4µg/ml. Arrows indicate positively labelled epithelial cells of renal tubule. Magnification: 400X.

Immunohistochemistry (Formalin/PFA-fixed paraffin-embedded sections) - Anti-Osteopontin antibody (ab33046)

Please note: All products are "FOR RESEARCH USE ONLY AND ARE NOT INTENDED FOR DIAGNOSTIC OR THERAPEUTIC USE"

Our Abpromise to you: Quality guaranteed and expert technical support

- Replacement or refund for products not performing as stated on the datasheet
- Valid for 12 months from date of delivery
- Response to your inquiry within 24 hours
- We provide support in Chinese, English, French, German, Japanese and Spanish
- Extensive multi-media technical resources to help you
- We investigate all quality concerns to ensure our products perform to the highest standards

If the product does not perform as described on this datasheet, we will offer a refund or replacement. For full details of the Abpromise, please visit <http://www.abcam.cn/abpromise> or contact our technical team.

Terms and conditions

- Guarantee only valid for products bought direct from Abcam or one of our authorized distributors