

Product datasheet

Anti-Ogg1 antibody [EPR4664(2)] ab124741

敲除验证
重组
RabMAb

★★★★☆
2 Abreviews
8 References
4 图像

概述

产品名称	Anti-Ogg1抗体[EPR4664(2)]
描述	兔单克隆抗体[EPR4664(2)] to Ogg1
宿主	Rabbit
经测试应用	适用于: WB 不适用于: ICC/IF
种属反应性	与反应: Human
免疫原	Synthetic peptide (the amino acid sequence is considered to be commercially sensitive) corresponding to Human Ogg1 aa 300 to the C-terminus (C terminal).
阳性对照	WB: HeLa, JAR, Raji, NCCIT and HepG2 cell lysates. Human cerebellum tissue lysate.
常规说明	Mouse, Rat: We have preliminary internal testing data to indicate this antibody may not react with these species. Please contact us for more information.

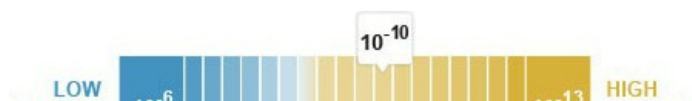
Our RabMAb[®] technology is a patented hybridoma-based technology for making rabbit monoclonal antibodies. For details on our patents, please refer to [RabMab[®] patents](#)

We are constantly working hard to ensure we provide our customers with best in class antibodies. As a result of this work we are pleased to now offer this antibody in purified format. We are in the process of updating our datasheets. The purified format is designated 'PUR' on our product labels. If you have any questions regarding this update, please contact our Scientific Support team.

This product is a recombinant rabbit monoclonal antibody.

性能

形式	Liquid
存放说明	Shipped at 4°C. Store at +4°C short term (1-2 weeks). Upon delivery aliquot. Store at -20°C. Stable for 12 months at -20°C.
解离常数 (K _D)	K _D = 2.75 x 10 ⁻¹⁰ M





[Learn more about \$K_D\$](#)

存储溶液	pH: 7.40 Preservative: 0.01% Sodium azide Constituents: 40% Glycerol, 0.05% BSA, 59% PBS
纯度	Protein A purified
克隆	单克隆
克隆编号	EPR4664(2)
同种型	IgG

应用

Our [Abpromise guarantee](#) covers the use of **ab124741** in the following tested applications.

The application notes include recommended starting dilutions; optimal dilutions/concentrations should be determined by the end user.

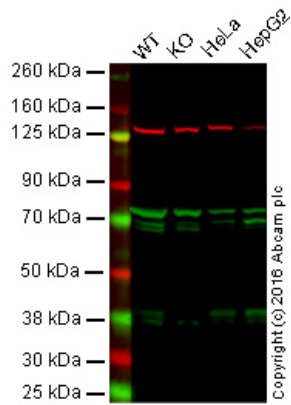
应用	Ab评论	说明
WB	★★★★☆	1/10000 - 1/50000. Detects a band of approximately 39 kDa (predicted molecular weight: 39 kDa).

应用说明 Is unsuitable for ICC/IF.

靶标

功能	DNA repair enzyme that incises DNA at 8-oxoG residues. Excises 7,8-dihydro-8-oxoguanine and 2,6-diamino-4-hydroxy-5-N-methylformamidopyrimidine (FAPY) from damaged DNA. Has a beta-lyase activity that nicks DNA 3' to the lesion.
组织特异性	Ubiquitous.
疾病相关	Defects in OGG1 may be a cause of renal cell carcinoma (RCC) [MIM:144700]. It is a heterogeneous group of sporadic or hereditary carcinoma derived from cells of the proximal renal tubular epithelium. It is subclassified into clear cell renal carcinoma (non-papillary carcinoma), papillary renal cell carcinoma, chromophobe renal cell carcinoma, collecting duct carcinoma with medullary carcinoma of the kidney, and unclassified renal cell carcinoma.
序列相似性	Belongs to the type-1 OGG1 family.
细胞定位	Mitochondrion; Nucleus and Nucleus > nucleoplasm. Nucleus speckle. Nucleus matrix. Together with APEX1 is recruited to nuclear speckles in UVA-irradiated cells.

图片



Western blot - Anti-Ogg1 antibody [EPR4664(2)]
(ab124741)

Lane 1: Wild-type HAP1 cell lysate (20 µg)

Lane 2: Ogg1 knockout HAP1 cell lysate (20 µg)

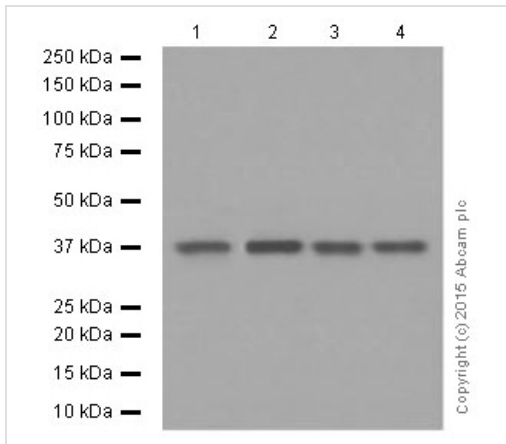
Lane 3: HeLa cell lysate (20 µg)

Lane 4: HepG2 cell lysate (20 µg)

Lanes 1 - 4: Merged signal (red and green).

Green - ab124741 observed at 38 kDa. Red - loading control, ab18058, observed at 124 kDa.

ab124741 was shown to recognize Ogg1 when Ogg1 knockout samples were used, along with additional cross-reactive bands. Wild-type and Ogg1 knockout samples were subjected to SDS-PAGE. ab124741 and ab18058 (loading control to vinculin) were diluted 1/2000 and 1/10 000 respectively and incubated overnight at 4°C. Blots were developed with Goat anti-Rabbit IgG H&L (IRDye® 800CW) preadsorbed (ab216773) and Goat anti-Mouse IgG H&L (IRDye® 680RD) preadsorbed (ab216776) secondary antibodies at 1/10000 dilution for 1 hour at room temperature before imaging.



Western blot - Anti-Ogg1 antibody [EPR4664(2)]
(ab124741)

All lanes : Anti-Ogg1 antibody [EPR4664(2)]
(ab124741) at 1/50000 dilution (purified)

- Lane 1 :** JAR cell lysate
- Lane 2 :** HepG2 cell lysate
- Lane 3 :** Raji cell lysate
- Lane 4 :** NCCIT cell lysate

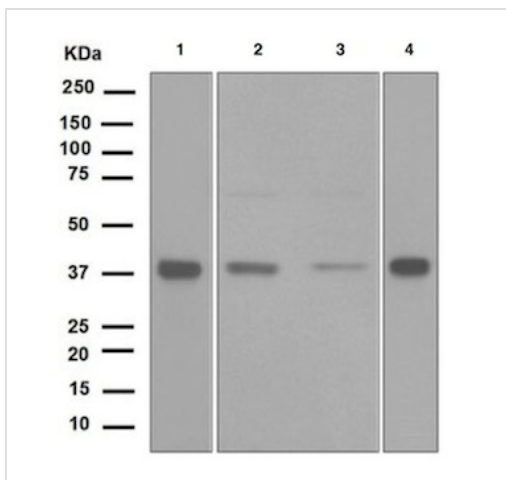
Lysates/proteins at 20 µg per lane.

Secondary

All lanes : Peroxidase-conjugated goat anti-rabbit IgG, (H+L) at 1/1000 dilution

Predicted band size: 39 kDa
Observed band size: 39 kDa

Blocking and dilution buffer: 5% NFDM/TBST.



Western blot - Anti-Ogg1 antibody [EPR4664(2)]
(ab124741)

All lanes : Anti-Ogg1 antibody [EPR4664(2)]
(ab124741) at 1/10000 dilution (unpurified)

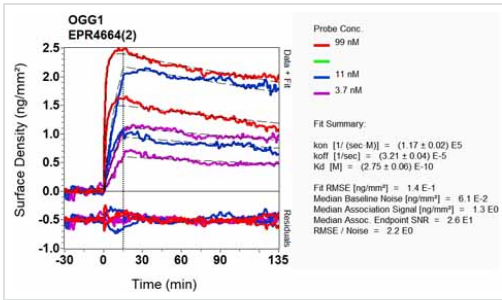
- Lane 1 :** Human cerebellum tissue lysate
- Lane 2 :** HeLa cell lysate
- Lane 3 :** JAR cell lysate
- Lane 4 :** HepG2 cell lysate

Lysates/proteins at 10 µg per lane.

Secondary

All lanes : HRP-conjugated goat anti-rabbit IgG at 1/2000 dilution

Predicted band size: 39 kDa
Observed band size: 39 kDa



Other-Anti-Ogg1 antibody [EPR4664(2)](ab124741)

Equilibrium dissociation constant (K_D)

Learn more about K_D

[Click here to learn more about \$K_D\$](#)

Please note: All products are "FOR RESEARCH USE ONLY AND ARE NOT INTENDED FOR DIAGNOSTIC OR THERAPEUTIC USE"

Our Abpromise to you: Quality guaranteed and expert technical support

- Replacement or refund for products not performing as stated on the datasheet
- Valid for 12 months from date of delivery
- Response to your inquiry within 24 hours
- We provide support in Chinese, English, French, German, Japanese and Spanish
- Extensive multi-media technical resources to help you
- We investigate all quality concerns to ensure our products perform to the highest standards

If the product does not perform as described on this datasheet, we will offer a refund or replacement. For full details of the Abpromise, please visit <http://www.abcam.cn/abpromise> or contact our technical team.

Terms and conditions

- Guarantee only valid for products bought direct from Abcam or one of our authorized distributors