

Product datasheet

Anti-OR2C1 antibody ab77500

2 图像

概述

产品名称	Anti-OR2C1抗体
描述	兔多克隆抗体to OR2C1
宿主	Rabbit
特异性	ab77500 detects endogenous levels of total OR2C1 protein.
经测试应用	适用于: WB, ELISA, ICC/IF
种属反应性	与反应: Human
免疫原	Synthetic peptide derived from an internal sequence within human OR2C1.
阳性对照	RAW264.7 cell extracts; A549 cells.

性能

形式	Liquid
存放说明	Shipped at 4°C. Upon delivery aliquot and store at -20°C. Avoid repeated freeze / thaw cycles.
存储溶液	Preservative: 0.02% Sodium Azide Constituents: 50% Glycerol, PBS (without Mg <sup>2+</sup> and Ca <sup>2+</sup> ), 150mM Sodium chloride, pH 7.4
纯度	Immunogen affinity purified
纯化说明	ab77500 was affinity purified from rabbit antiserum by affinity chromatography using epitope specific immunogen.
克隆	多克隆
同种型	IgG

应用

Our [Abpromise guarantee](#) covers the use of **ab77500** in the following tested applications.

The application notes include recommended starting dilutions; optimal dilutions/concentrations should be determined by the end user.

应用	Ab评论	说明
WB		1/500 - 1/1000. Predicted molecular weight: 35 kDa.

应用	Ab评论	说明
ELISA		1/20000.
ICC/IF		1/500 - 1/1000.

## 靶标

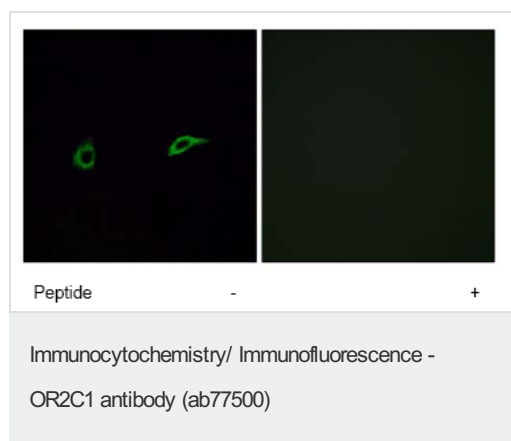
### 相关性

Olfactory receptors interact with odorant molecules in the nose, to initiate a neuronal response that triggers the perception of a smell. The olfactory receptor proteins are members of a large family of G-protein-coupled receptors (GPCR) arising from single coding-exon genes. Olfactory receptors share a 7-transmembrane domain structure with many neurotransmitter and hormone receptors and are responsible for the recognition and G protein-mediated transduction of odorant signals. The olfactory receptor gene family is the largest in the genome. The nomenclature assigned to the olfactory receptor genes and proteins for this organism is independent of other organisms. [Entrez Gene]

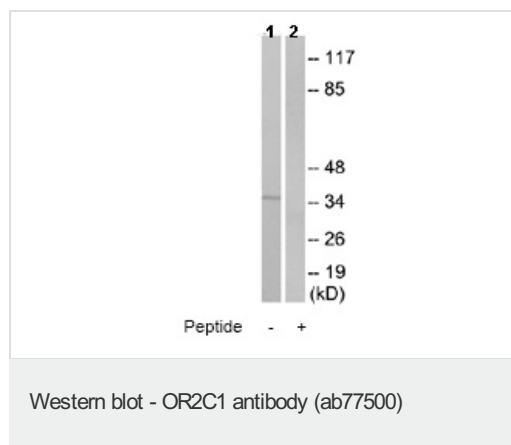
### 细胞定位

Cell membrane; Multi-pass membrane protein

## 图片



ab77500, at a 1/500 dilution, staining OR2C1 in A549 cells by Immunofluorescence in the absence (left image) or presence (right image) of the immunizing peptide.



**All lanes** : Anti-OR2C1 antibody (ab77500) at 1/500 dilution

**Lane 1** : RAW264.7 cell extract

**Lane 2** : RAW264.7 cell extract with immunizing peptide at 10 µg

Lysates/proteins at 10 µg per lane.

**Predicted band size:** 35 kDa

**Observed band size:** 35 kDa

### **Our Abpromise to you: Quality guaranteed and expert technical support**

---

- Replacement or refund for products not performing as stated on the datasheet
- Valid for 12 months from date of delivery
- Response to your inquiry within 24 hours
  
- We provide support in Chinese, English, French, German, Japanese and Spanish
- Extensive multi-media technical resources to help you
- We investigate all quality concerns to ensure our products perform to the highest standards

If the product does not perform as described on this datasheet, we will offer a refund or replacement. For full details of the Abpromise, please visit <http://www.abcam.cn/abpromise> or contact our technical team.

### **Terms and conditions**

---

- Guarantee only valid for products bought direct from Abcam or one of our authorized distributors