

Product datasheet

Anti-Nrf2 antibody ab89443

7 References 6 图像

概述

产品名称	Anti-Nrf2抗体
描述	小鼠单克隆抗体to Nrf2
经测试应用	适用于: ICC/IF, Flow Cyt, IHC-P, WB, ELISA
种属反应性	与反应: Rat, Human 预测可用于: Chimpanzee, Monkey, Gorilla, Orangutan 
免疫原	Recombinant fragment: SPSVASPEHS VESSYGDTL LGLSDSEVEE LDSAPGSVKQ NGPKTPVHSS GDMVQLSPS QGQSTHVHDA QCENTPEKEL PVSPGHRKTP FTKDKHSSRL , corresponding to amino acids 351-450 of Human Nrf2 with proprietary tag Q16236 Run BLAST with ExPASy Run BLAST with NCBI
阳性对照	WB: PC12 and Nrf2 transfected 293T cell lysates. ICC/IF: HeLa cells. IHC-P: Human lung tissue.

性能

形式	Liquid
存放说明	Shipped at 4°C. Upon delivery aliquot and store at -20°C or -80°C. Avoid repeated freeze / thaw cycles.
存储溶液	Preservative: None Constituents: 1X PBS, pH 7.2
纯度	Protein A purified
克隆	单克隆
同种型	IgG2a
轻链类型	kappa

应用

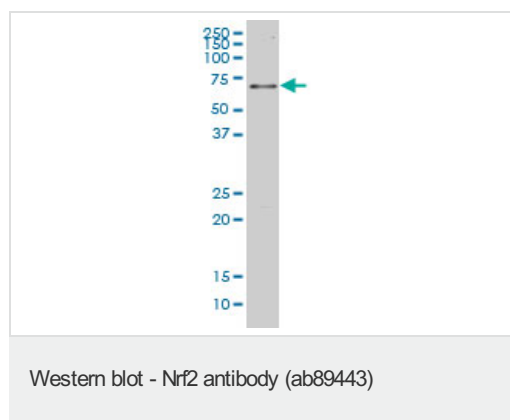
Our [Abpromise guarantee](#) covers the use of **ab89443** in the following tested applications.
The application notes include recommended starting dilutions; optimal dilutions/concentrations should be determined by the end user.

应用	Ab评论	说明
ICC/IF		Use a concentration of 5 µg/ml.
Flow Cyt		Use 0.5µg for 10 ⁶ cells. ab170191 - Mouse monoclonal IgG2a, is suitable for use as an isotype control with this antibody.
IHC-P		Use a concentration of 0.5 µg/ml. Perform heat mediated antigen retrieval with citrate buffer pH 6 before commencing with IHC staining protocol.
WB		Use a concentration of 1 µg/ml. Predicted molecular weight: 68 kDa.
ELISA		Use at an assay dependent concentration.

靶标

功能	Transcription activator that binds to antioxidant response (ARE) elements in the promoter regions of target genes. Important for the coordinated up-regulation of genes in response to oxidative stress. May be involved in the transcriptional activation of genes of the beta-globin cluster by mediating enhancer activity of hypersensitive site 2 of the beta-globin locus control region.
组织特异性	Widely expressed. Highest expression in adult muscle, kidney, lung, liver and in fetal muscle.
序列相似性	Belongs to the bZIP family. CNC subfamily. Contains 1 bZIP domain.
结构域	Acidic activation domain in the N-terminus, and DNA binding domain in the C-terminus.
翻译后修饰	Phosphorylation of Ser-40 by PKC in response to oxidative stress dissociates NFE2L2 from its cytoplasmic inhibitor KEAP1, promoting its translocation into the nucleus.
细胞定位	Cytoplasm > cytosol. Nucleus. Cytosolic under unstressed conditions, translocates into the nucleus upon induction by electrophilic agents.

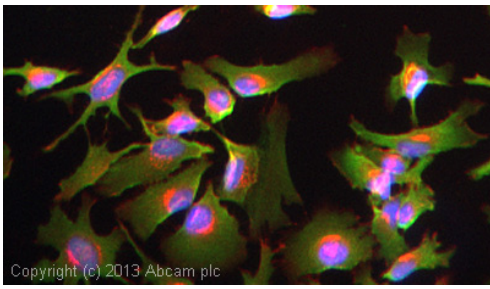
图片



Anti-Nrf2 antibody (ab89443) at 1 µg/ml +
PC12 cell lysate at 50 µg

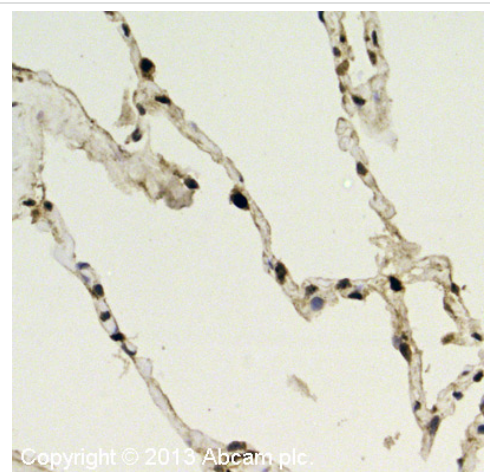
Predicted band size : 68 kDa

Observed band size : 68 kDa



Immunocytochemistry/ Immunofluorescence - Anti-Nrf2 antibody (ab89443)

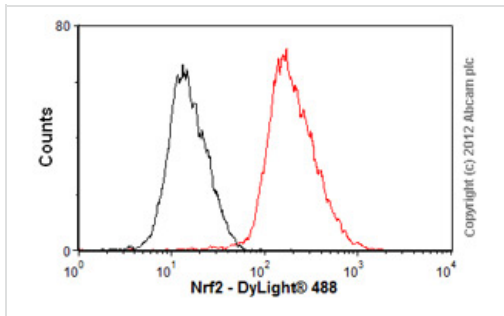
ICC/IF image of ab89443 stained HeLa cells. The cells were 100% methanol fixed (5 min) and then incubated in 1%BSA / 10% normal goat serum / 0.3M glycine in 0.1% PBS-Tween for 1h to permeabilise the cells and block non-specific protein-protein interactions. The cells were then incubated with the antibody (ab89443, 5µg/ml) overnight at +4°C. The secondary antibody (green) was ab96879, DyLight® 488 goat anti-mouse IgG (H+L) used at a 1/250 dilution for 1h. Alexa Fluor® 594 WGA was used to label plasma membranes (red) at a 1/200 dilution for 1h. DAPI was used to stain the cell nuclei (blue) at a concentration of 1.43µM.



Immunohistochemistry (Formalin/PFA-fixed paraffin-embedded sections) - Anti-Nrf2 antibody (ab89443)

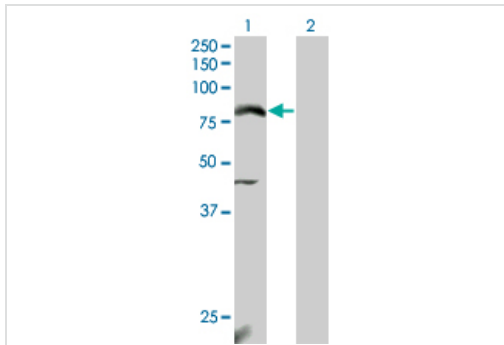
IHC image of Nrf2 staining in Human Lung formalin fixed paraffin embedded tissue section, performed on a Leica Bond™ system using the standard protocol F. The section was pre-treated using heat mediated antigen retrieval with sodium citrate buffer (pH6, epitope retrieval solution 1) for 20 mins. The section was then incubated with ab89443, 0.5 µg/ml, for 15 mins at room temperature and detected using an HRP conjugated compact polymer system. DAB was used as the chromogen. The section was then counterstained with haematoxylin and mounted with DPX.

For other IHC staining systems (automated and non-automated) customers should optimize variable parameters such as antigen retrieval conditions, primary antibody concentration and antibody incubation times.



Flow Cytometry-Anti-Nrf2 antibody(ab89443)

Overlay histogram showing HepG2 cells stained with ab89443 (red line). The cells were fixed with 4% paraformaldehyde (10 min) and then permeabilized with 0.1% PBS-Tween for 20 min. The cells were then incubated in 1x PBS / 10% normal goat serum / 0.3M glycine to block non-specific protein-protein interactions followed by the antibody (ab89443, 0.5 μ g/1x10⁶ cells) for 30 min at 22°C. The secondary antibody used was DyLight® 488 goat anti-mouse IgG (H+L) (ab96879) at 1/500 dilution for 30 min at 22°C. Isotype control antibody (black line) was mouse IgG2a [ICIGG2A] (ab91361, 1 μ g/1x10⁶ cells) used under the same conditions. Acquisition of >5,000 events was performed. This antibody gave a positive signal in HepG2 cells fixed with 80% methanol (5 min)/permeabilized with 0.1% PBS-Tween for 20 min used under the same conditions.



Western blot - Nrf2 antibody (ab89443)

All lanes : Anti-Nrf2 antibody (ab89443) at 1 μ g/ml

Lane 1 : Nrf2 transfected 293T cell lysate

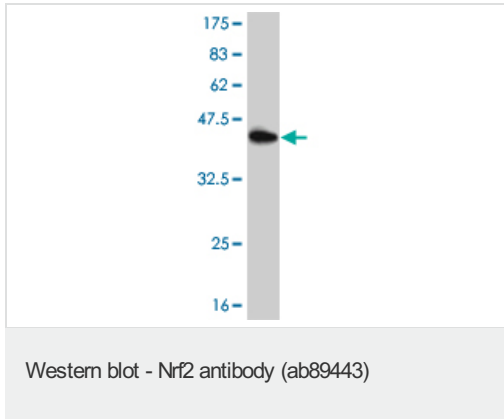
Lane 2 : Non-transfected lysate

Lysates/proteins at 25 μ g per lane.

Predicted band size : 68 kDa

Observed band size : 68 kDa

Additional bands at : 45 kDa. We are unsure as to the identity of these extra bands.



Anti-Nrf2 antibody (ab89443) at 1 $\mu\text{g/ml}$ +
recombinant immunogen at 0.2 μg

Predicted band size : 68 kDa

Observed band size : 37 kDa

Western blot against tagged recombinant
immunogen using ab89443 antibody at 1 $\mu\text{g/ml}$
dilution. Predicted band size of immunogen is
11kDa.

Please note: All products are "FOR RESEARCH USE ONLY AND ARE NOT INTENDED FOR DIAGNOSTIC OR THERAPEUTIC USE"

Our Abpromise to you: Quality guaranteed and expert technical support

- Replacement or refund for products not performing as stated on the datasheet
- Valid for 12 months from date of delivery
- Response to your inquiry within 24 hours
- We provide support in Chinese, English, French, German, Japanese and Spanish
- Extensive multi-media technical resources to help you
- We investigate all quality concerns to ensure our products perform to the highest standards

If the product does not perform as described on this datasheet, we will offer a refund or replacement. For full details of the Abpromise, please visit <http://www.abcam.cn/abpromise> or contact our technical team.

Terms and conditions

- Guarantee only valid for products bought direct from Abcam or one of our authorized distributors